

DATA SHEET



Control software Digital Profilab

Description

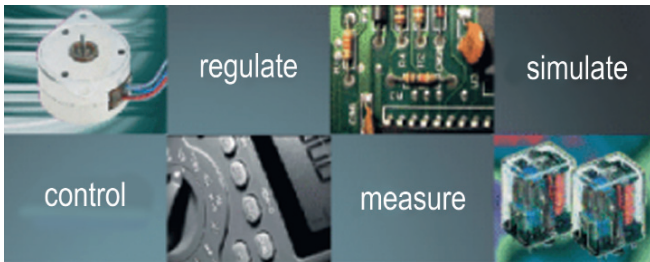
Characteristic features

- Universal PC based control software
- Transfer of measured values over the USB-port or PC add-on cards
- Mathematical and logical processing of measured values in real time
- Release of actuator signals over the USB-port or add-on cards
- Arithmetical and logical building blocks
- Ready modules as Y/t-writer, timer switch or logic analyser
- Graphical development environment
- Integrated compiler
- System requirements: CD-ROM drive, Windows 98, 2000, XP

Areas of application

- Research and science, laboratories
- Industrial, testing laboratories, quality assurance
- Schools, teaching and training
- Building instrumentation, heating regulation

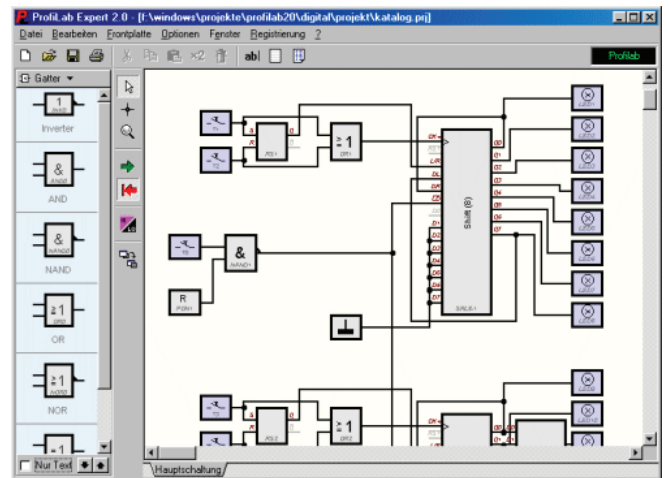
Description



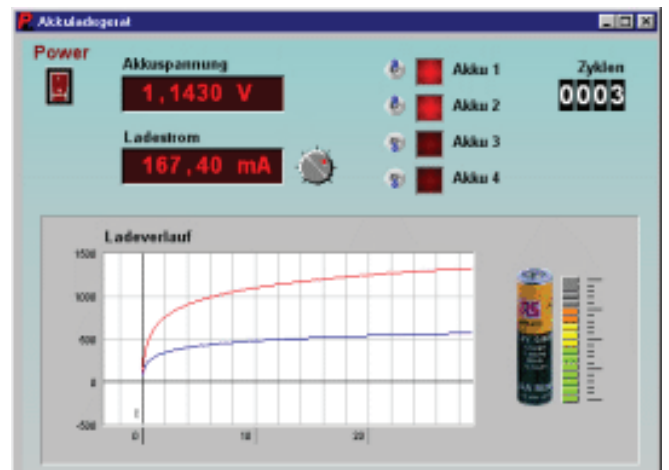
With this software, you can develop your own digital and analog controls in a quick and simple manner. Stepper motor controls, model rail roads or complex measuring system projects - anything that is to be regulated electrically, can be realised. And the best: You don't have to write a single line of the program! You can visually develop your circuit directly on the PC, join switches, buttons, displays etc. and hence build your own project step by step in this way.

The new version can work with a wide variety of hardware (AD-converter, I/O-cards, relay cards, measuring instruments) from renowned manufacturers. In addition, Internet functionality and email facility is also integrated. In our product range, you can find thermometers (up to 64 channels), hygrometers, sound level measuring instruments, anemometer and many more items. Each hardware appears as a normal component in your circuit. In this software, you can simply con-

nect the desired input and output. You would not have worked before in such a simple manner on your PC with external hardware. By just press of a button, the PC simulates your circuit in real time. Incoming measurements are processed and signals are delivered out.



The operation is carried out through a self-designed front-end, on which you can arrange switches, potentiometers, displays, LED's and instruments.



With the EXPERT™ version of compiler, you can also convert the complete project into an independent self-executable program. Then, the program can also be executed without the ProfiLab „Expert“ software and can be freely distributed.

Thus a complete software development system comes through without even writing a single line of program code. With the software, you can realize professional instrumentation projects in a simple, graphical development environment.

DATA SHEET



Control software Digital Profilab

You simply draw the scheme of measuring circuit and the project is ready. Without any knowledge of programming, the measured values of the probes in the measuring circuit can be used. Arithmetic and logical components take care about the linking and processing of measured values. Modules such as master clocks, timer switches and relay cards facilitate extensive control and regulation possibilities. Various instruments, writers, and spreadsheets help in storage and representation of measurements and the measurement set-up can be operated through display and control elements.

Front end design

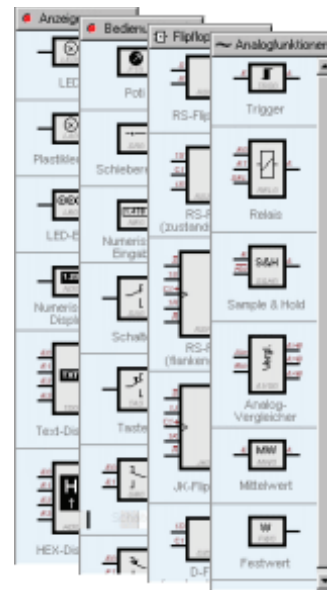
During simulation, you can freely arrange your circuit on a front end screen. All control elements like switches, buttons, and also indications like displays, graphics or tables can be arranged on this front end screen. You can arrange the front end as desired and mark the individual elements. With a state-of-art operating screen, you professionally complete your project.



One of the example front ends created with ProfiLab has been shown above. Through combination of bitmap with control and display elements, there is hardly any limit to your fantasies for creating a visually attractive front end.

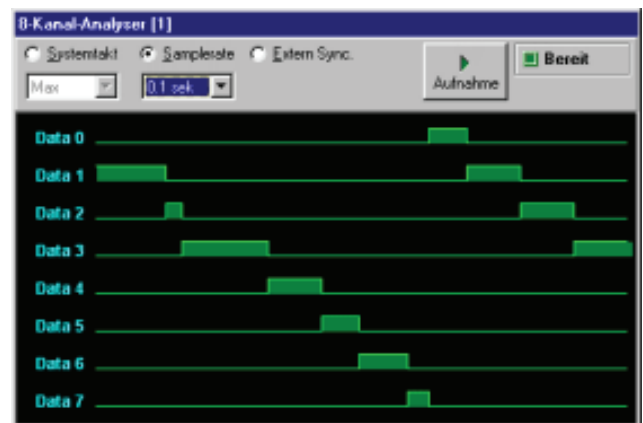
For development of your project, all logical and arithmetic components are available in the extensive parts library for linking and processing of your signals. The library contains all components, sorted group wise, which are necessary for development. Besides the logical components (like e.g. gates, flip-flops, counters, register, ROM and RAM) there are also many instrumentation components (like e.g. Trigger, formula module, sample & hold, comparator etc.). In addition, many diverse display possibilities are available: From a simple LED up to a XY-writer, from pointer-instrument up to the table,

you can use everything on the front end to represent the measured values and status. You have to simply draw the necessary elements on the scheme and wire them as required. Similarly, communication with the used hardware is also built up through „standard“ components. Then, these can be seamlessly integrated into your circuit, and your control is ready.



During development, you can try out your circuit at any point of time. Your project is then simulated in real time and communication with the hardware takes place automatically.

Different Tools like display of logical conditions during simulation, or the integrated logic analyser helps to identify the errors in your control, or to illustrate the functioning of your circuit.



DATA SHEET



Control software Digital Profilab

Compiler inclusive

With the integrated compiler, it is possible to transform completed projects to stand alone applications. These applications created through the Profilab-Software, can be started on any Windows PC without the need to install the basic original software. But the stand-alone application cannot be further modified after compilation. However, it can be freely distributed by the owner of original software. Thus a complete software development system comes through without even writing a single line of program code.

Software updates

The latest device drivers are available at the web-site www.abacom.online.de/html/updates.html.

Please follow the instructions on this website to update your software. If you face any problems with the device drivers, first update the software with its latest version.

Delivery program

ProfilabExpert

Art. No. 0554 1800

Binary Input/Output (USB): 8 channel relay and I/O-cards, 64 channel I/O-card

Analog to Digital converter card (USB): 4-channel / 8 Bit, 4 channel 24 Bit

Measuring devices (RS 232 and USB): 16 / 64 channel temperature measuring system, Hygro-thermometer, J/K-thermometer, Anemometer, Sound level instrument, Multimeter, Pressure meter, Material humidity measuring instrument