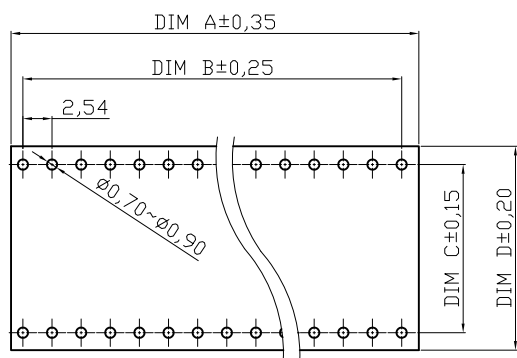
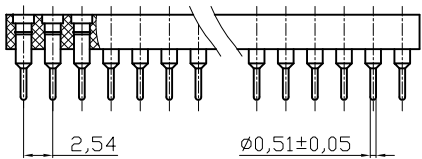
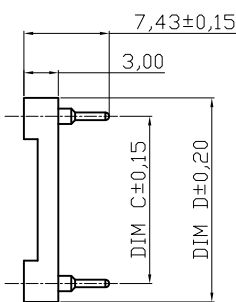
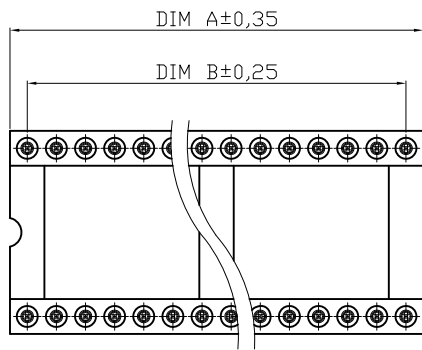


A
B
C
D
E
F
G
H

A
B
C
D
E
F
G
H



Contact	Dim A	Dim B	Dim C	Dim D
10	12.70	10.16	7.62	10.16

PCB LAYOUT

NOTES

Material:
 Pin (outer sleeve) : Brass,machined, CuZn38Pb2
 Clip(contact 4 finger) : Phosphor Bronze
 Plating Sleeve : 2um/80u"nickel,5um/200u"Tin
 Clip Plating: 2um/80 u"nickel,Gold Flash
 Insulator body(black) : Glass filled thermoplastic polyester UL94V-0

Electrical
 Current rating : 3 Amps/contact max.
 Contact resistance : ≤ 4mΩ /contact
 Insulation resistance : ≥ 10000MΩ at 500VAC
 Rated voltage : 100 VRMS /150VDC

Mechanical
 Operating temperature : Gold plated:-55 °C to +125°C
 (Continuous) -67 °F to +105°F
 Tin plated:-40 °C to +105°C

Average insertion force with steel pin of: ø0.43mm/0.017" < 250g
 Average withdrawal force with steel pin of ø 0.43mm/0.017" >50g
 Mechanical life : min.200

Applications and features:
 1.The open frame is most common type.
 2.The open body design gives better access (for cleaning and inspections) to air -cooling.
 3.Side and end stackable.
 4.High retention design prevents IC walkout during heavy vibration.
 5.Closed bottom sleeve for 100% anti-wicking of silder.
 6.Twist free construction.

Environmental data
 Solderability (IEC 60068-2-20. Ta) :235 °C, 2s
 Resistance to soldering heat (IEC 60068-2-20. Tb) :
 -Through hole mount components :260 °C, 10s

RoHS compliant

Scale	1:1	Date	20.07.2012	Name	Lucas	Customer-No.	CONRAD 183820	
TOLERANCE		Drawn		Approved	Winnie	ASSMANN WSW-No.	AR 10-HZL-TT	
X.	±0.50	Date				Drawing-No.	ASS 4903 CO	rev00
X.X	±0.30	Date				Replace		Sheet
X.XX	±0.10	Date						
DIM	TOL	Date						
X.°	±1°	Date						
Angle	TOL	Date						
	© Drawn	20.07.2012	Lucas					
	Id.	Modification	Name					