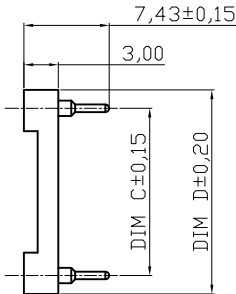
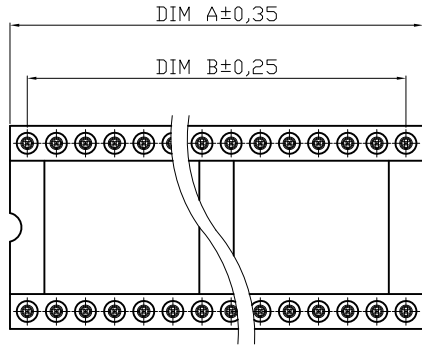


	1	2	3	4	5	6	7	
--	---	---	---	---	---	---	---	--

A
B
C
D
E
F

A
B
C
D
E
F



NOTES

Material:
 Pin (outer sleeve) : Brass,machined, CuZn38Pb2
 Clip(contact 4 finger) : Phosphor Bronze
 Plating Sleeve : 2um/80u"nickel,5um/200u"Tin
 Clip Plating: 2um/80 u"nickel,Gold Flash
 Insulator body(black) : Glass filled thermoplastic polyester UL94V-0

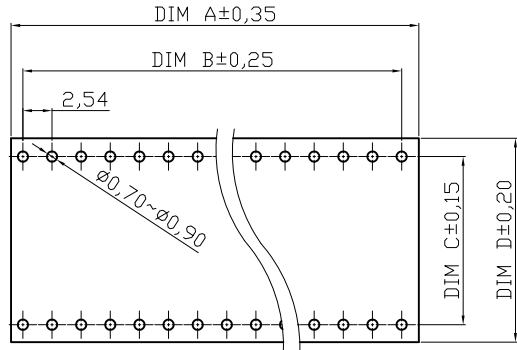
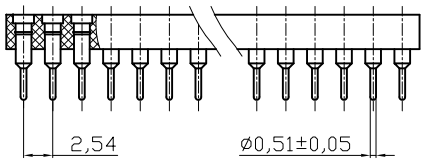
Electrical
 Current rating : 3 Amps/contact max.
 Contact resistance : ≤ 4mΩ /contact
 Insulation resistance : ≥ 10000MΩ at 500VAC
 Rated voltage : 100 VRMS /150VDC

Mechanical
 Operating temperature : Gold plated:-55 °C to +125°C
 (Continuous) -67 °F to +105°F
 Tin plated:-40 °C to +105°C

Average insertion force with steel pin of: $\phi 0.43\text{mm}/0.017'' < 250\text{g}$
 Average withdrawal force with steel pin of $\phi 0.43\text{mm}/0.017'' > 50\text{g}$
 Mechanical life : min.200

Applications and features:
 1.The open frame is most common type.
 2.The open body design gives better access (for cleaning and inspections) to air -cooling.
 3.Side and end stackable.
 4.High retention design prevents IC walkout during heavy vibration.
 5.Closed bottom sleeve for 100% anti-wicking of silder.
 6.Twist free construction.


Environmental data
 Solderability (IEC 60068-2-20. Ta) :235 °C, 2s
 Resistance to soldering heat (IEC 60068-2-20. Tb) :
 -Through hole mount components :260 °C, 10s



PCB LAYOUT

Contact	Dim A	Dim B	Dim C	Dim D
14	17.78	15.24	7.62	10.16

RoHS compliant

Scale	1:1						Date	Name	Customer-No. CONRAD 183825	
TOLERANCE						Drawn	20.07.2012	Lucas		
X.	±0.50								ASSMANN WSW-No. AR 14-HZL-TT	
X.X	±0.30					Approved	20.07.2012	Winnie		
X.XX	±0.10								Drawing-No.	
DIM	TOL								ASS 4904 CO	rev00
X.°	±1°									
		©	Drawn		20.07.2012	Lucas			Replace	Sheet
Angle	TOL	Id.	Modification		Date	Name				

	1	2	3	4	5	6	7	svxxx
--	---	---	---	---	---	---	---	-------