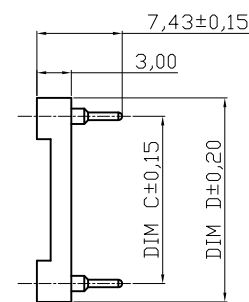
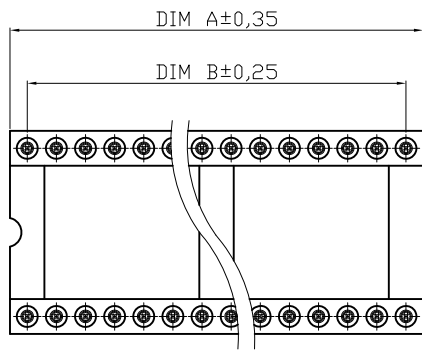


A
B
C
D
E
F
G
H

A
B
C
D
E
F
G
H



NOTES

Material:
 Pin (outer sleeve) : Brass, machined, CuZn38Pb2
 Clip(contact 4 finger) : Phosphor Bronze
 Plating Sleeve : 2um/80u"nickel, 5um/200u"Tin
 Clip Plating: 2um/80 u"nickel, Gold Flash
 Insulator body(black) : Glass filled thermoplastic polyester UL94V-0

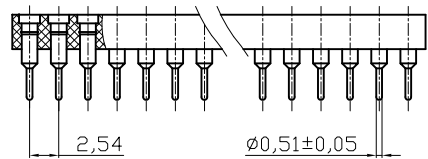
Electrical
 Current rating : 3 Amps/contact max.
 Contact resistance : $\leq 4m\Omega$ /contact
 Insulation resistance : $\geq 10000M\Omega$ at 500VAC
 Rated voltage : 100 VRMS /150VDC

Mechanical
 Operating temperature : Gold plated:-55°C to +125°C
 (Continuous) -67°F to +105°F
 Tin plated:-40°C to +105°C

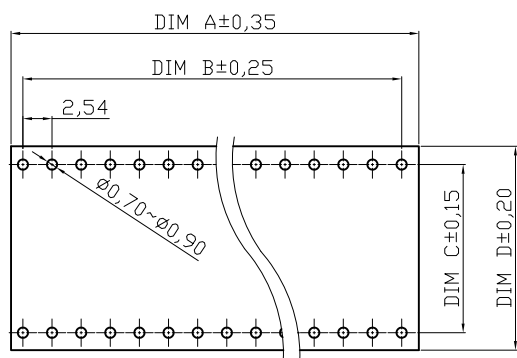
Average insertion force with steel pin of: $\phi 0.43mm/0.017"$ < 250g
 Average withdrawal force with steel pin of $\phi 0.43mm/0.017"$ >50g
 Mechanical life : min.200

Applications and features:
 1.The open frame is most common type.
 2.The open body design gives better access (for cleaning and inspections) to air -cooling.
 3.Side and end stackable.
 4.High retention design prevents IC walkout during heavy vibration.
 5.Closed bottom sleeve for 100% anti-wicking of silder.
 6.Twist free construction.

Environmental data
 Solderability (IEC 60068-2-20. Ta) :235°C, 2s
 Resistance to soldering heat (IEC 60068-2-20. Tb) :
 -Through hole mount components :260°C, 10s



Contact	Dim A	Dim B	Dim C	Dim D
24	30.48	27.94	15.24	17.78



PCB LAYOUT

RoHS compliant

Scale	1:1	Date	20.07.2012	Name	Lucas
TOLERANCE		Drawn	20.07.2012	Winnie	
X.	±0.50	Approved	20.07.2012		
X.X	±0.30				
X.XX	±0.10				
DIM	TOL				
X.°	±1°				
Angle	TOL	© Drawn	20.07.2012	Lucas	
		Id.	Modification	Date	Name



Customer-No. CONRAD 183832	
ASSMANN WSW-No. AR 24-HZL-TT	
Drawing-No. ASS 4908 CO	rev00
Replace	Sheet