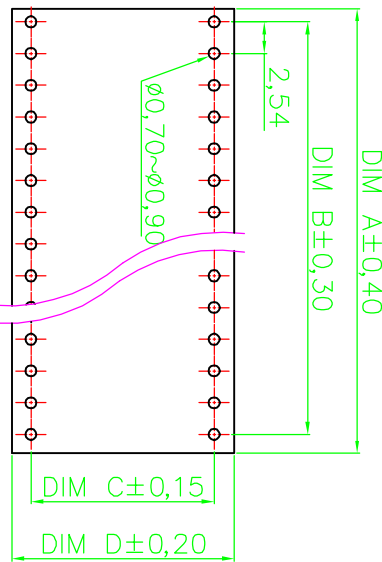
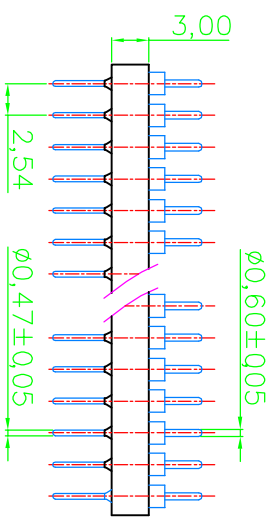
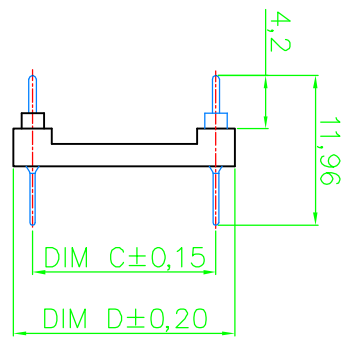
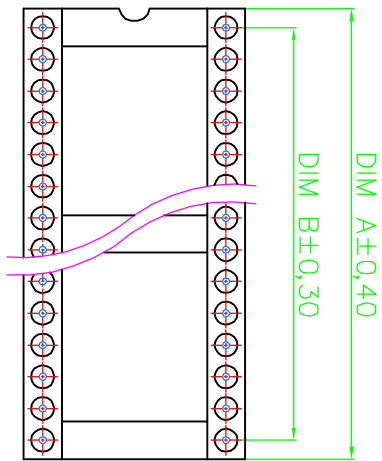


1	2	3	4	5	6	7
---	---	---	---	---	---	---



Contact	Dim A	Dim B	Dim C	Dim D
06	7.62	5.08	7.62	10.16
08	10.16	7.62	7.62	10.16
10	12.70	10.16	7.62	10.16
14	17.78	15.24	7.62	10.16
16	20.32	17.78	7.62	10.16
18	22.86	20.32	7.62	10.16
20	25.40	22.86	7.62	10.16
24	30.48	27.94	15.24	17.78
28	35.56	33.02	15.24	17.78
40	50.80	48.26	15.24	17.78

**RoHS compliant**

Scale	1:1
TOLERANCE	
X.	±0.50
X.X	±0.30
X.XX	±0.10
DIM	TOL
X.°	±1°
Angle	

Drawn	23.07.2009	Dean
Approved	23.07.2009	Hellwig

Customer-No.	Conrad P/N : 183860
ASSMANN WSW-No.	AR 16ST/T
Drawing-No.	ASS 1187 CO
Replace	ASS 1187A CO
Sheet	rev01

**Technical Data**  
Material: Brass, machined, CuZn38Pb2  
Pin (outer sleeve): 2um/80 u"nickel, Gold Flash  
Plating: Glass filled polyester UL94V-0  
Insulator body (black):  
Electrical  
Current rating: 3 Amps/contact max.  
Insulation resistance: 11000MΩ at 500VAC  
Rated voltage: 100 VRMS/150VDC  
Mechanical  
Operating temperature: Gold plated: -55°C to +125°C  
(Continuous) -67° F to +257° F  
Applications and features:  
1. The male header contacts are designed for "Sandwich application" because the pin of Ø0.5mm/0.050" can be plugged into a standard IC-contact.  
2.3 different heights are available.  
3. Low profile type.  
4. Side and end stackable.  
5. Twist free construction.  
Environmental data  
Solderability (IEC 60068-2-20, Ta): 235° C, 2s  
Resistance to soldering heat (IEC 60068-2-20, Tp):  
-Through hole mount components: 260° C, 10s

1	2	3	4	5	6	7
---	---	---	---	---	---	---

H	G	F	E	D	C	B	A
---	---	---	---	---	---	---	---

SW/XXX