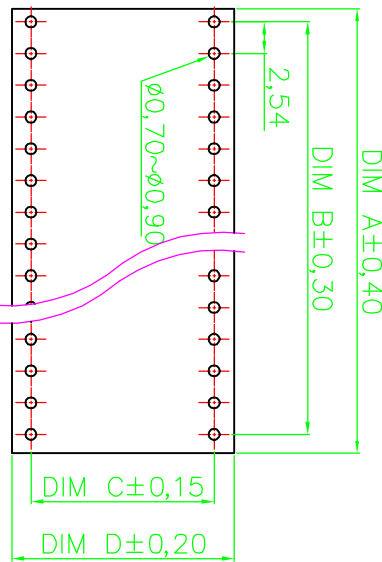
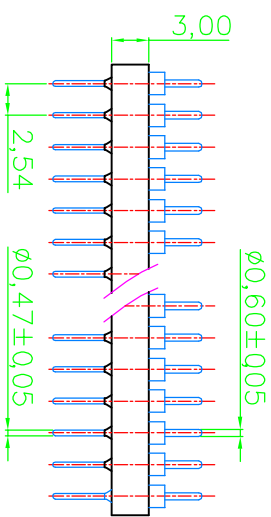
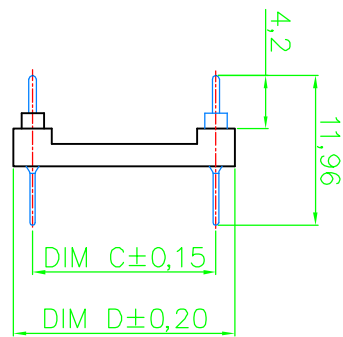
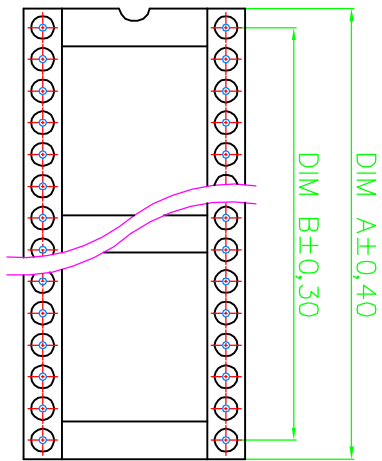


1	2	3	4	5	6	7
---	---	---	---	---	---	---



Contact	Dim A	Dim B	Dim C	Dim D
06	7.62	5.08	7.62	10.16
08	10.16	7.62	7.62	10.16
10	12.70	10.16	7.62	10.16
14	17.78	15.24	7.62	10.16
16	20.32	17.78	7.62	10.16
18	22.86	20.32	7.62	10.16
20	25.40	22.86	7.62	10.16
24	30.48	27.94	15.24	17.78
28	35.56	33.02	15.24	17.78
40	50.80	48.26	15.24	17.78

Technical Data
Material: Brass, machined, CuZn38Pb2
Pin (outer sleeve): 2um/80 u"nickel, Gold Flash
Plating: Glass filled polyester UL94V-0
Insulator body (black):
Electrical
Current rating: 3 Amps/contact max.
Insulation resistance: 11000MΩ at 500VAC
Rated voltage: 100 VRMS/150VDC
Mechanical
Operating temperature: Gold plated: -55°C to +125°C
(Continuous) -67° F to +257° F
Applications and features:
1. The male header contacts are designed for "Sandwich application" because the pin of Ø0.5mm/0.050" can be plugged into a standard IC-contact.
2.3 different heights are available.
3. Low profile type.
4. Side and end stackable.
5. Twist free construction.
Environmental data
Solderability (IEC 60068-2-20, Ta): 235° C, 2s
Resistance to soldering heat (IEC 60068-2-20, Tb):
-Through hole mount components: 260° C, 10s

RoHS compliant

Scale	1:1
TOLERANCE	
X.	±0.50
X.X	±0.30
X.XX	±0.10
DIM TOL	
X.°	±1°
Angle	
Id.	① Drawn
Modification	
Date	23.07.2009
Name	Dean

Customer-No.	Conrad P/N : 183865
ASSMANN WSW-No.	AR 20-ST/T
Drawing-No.	ASS 1187 CO
Replace	ASS 1187A CO
	ASS 1187B CO
Sheet	rev01

1	2	3	4	5	6	7
---	---	---	---	---	---	---

A	B	C	D	E	F	H
---	---	---	---	---	---	---

SW/XXX