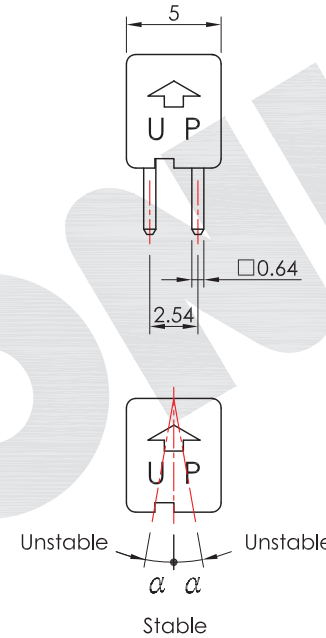
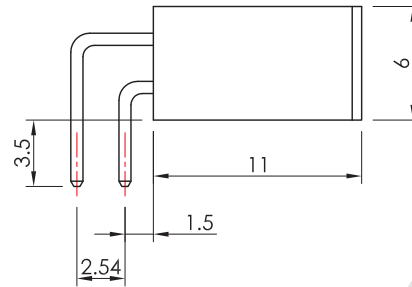
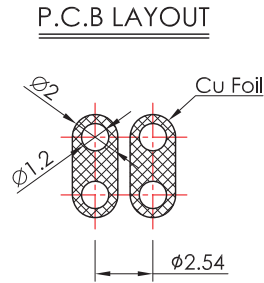


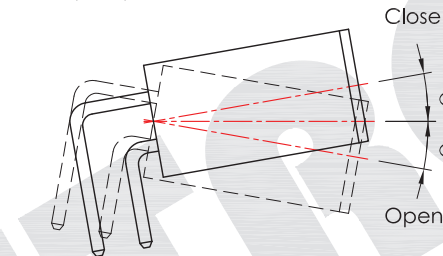
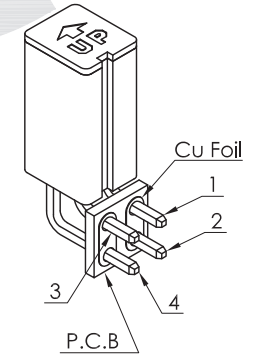
*開關產品未經SWITRONIC同意，請勿拆解，否則無法負品質及安全責任。
Please do not decompose the switch without any permission from SWITRONIC, otherwise the quality and safety responsibility could not be guaranteed.

*本圖面若與目錄之規格尺寸不符，以本圖面規格尺寸為主。
Below is our main specification if different from catalog.

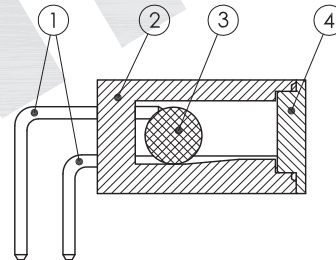
RoHS compliant



INSTALLATION POSITION



Remark: Uncertain degree: $\theta < 10^\circ$, $\alpha > 10^\circ$



SPECIFICATION

- Contact rating:** 25mA 24V DC.
- Soldering type:** Dip.
- Contact resistance:** Initial: 5Ω Max.
After life test: 10Ω Max.
- Differential angle:** Refer to the remark.
- Insulation resistance:** 1,000MΩ Min. at 100V DC.
- Dielectric strength:** 500V DC Min. for 1 minute.
- Capacitance:** 5pF Max.
- Minimum load:** 10mA 24V DC. (reference only)
- Temperature range:** Operating: -25°C ~ +85°C.
Storage: -40°C ~ +85°C.
- Pull force of terminal:** 500g for 1 minute.
- Operation life:** 100,000 Cycles.
- Conductive rate (switch-on rate):** Over 90% Min.
- Humidity:** 95%RH, 40°C for 96 hrs.
- Solder ability:** After flux 250°C Max. for 3 sec 95% coverage.
- Soldering time:** 1 time only.

Note1: Unwashable, don't be immersed by epoxy and organic solvent.
Note2: Please check the actual size, do not scale the drawing page.
Note3: Application in occasions that require vibration functions, adding design of "OFF DELAY" is recommended.
For great vibration, optical type products are recommended.
Parallel connecting pin 1 & pin 2, pin 3 & pin 4.

MATERIAL

- Terminal:** Copper alloy, C2700 Gold plated over Nickel, Gold: 3μ. — ①
- Housing:** PA66+35%GF, UL94V-0, black. — ②
- Cu-Ball:** Copper alloy, C2600 Gold plated over Nickel, Gold: 3μ. — ③
- Housing cover:** PA66+35%GF, UL94V-0, black. — ④

STORAGE METHOD

After opening the bag of the switches, please include a desiccant into the bag, then seal it to avoid product oxidation.
打開包裝袋後，請在袋中加入乾燥劑並「密封」，避免產品氧化。

V2.2	無	改版	2010.01.12
V2.1	無	圖框改版	2007.09.13
V2.0	無	新繪製	2003.08.15
版本 VER.	符號 SYMBOL	修改內容 ALTERATION	更新日期 DATE



產品 PRODUCT	Rolling Ball Switch		型號 MODEL NO.	RBS040200-G
製圖 DRAWN BY	核圖 CHECKED BY	主管 APPROVED BY	單位 UNIT	mm
Jan Chiu	Alex Lin	Margaret Lee	比例 SCALE	5 : 2
			公差 TOLERANCE	.X=±0.3mm, .XX=±0.2mm

SWITRONIC[®]
INDUSTRIAL CORP.
Switches

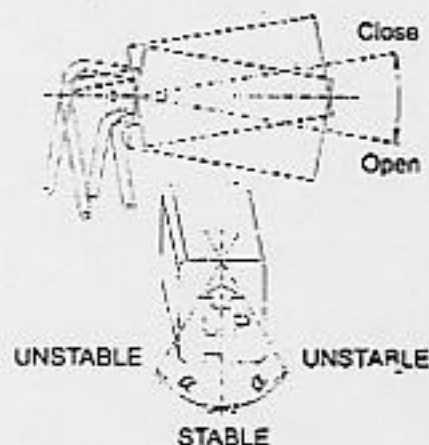


一綺電子企業股份有限公司

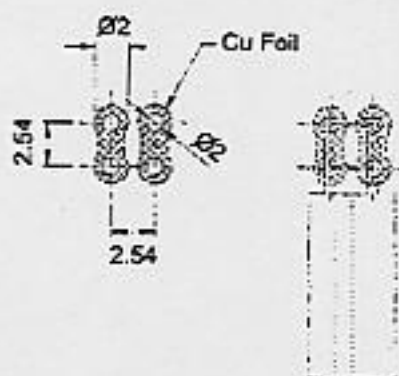
總公司：110 台北市信義路四段415號13樓之3
13F-3, NO.415, SEC.4, HSIN YI ROAD, TAIPEI, TAIWAN
TEL : 886-2-27290229(Rep.) FAX : 886-2-27582086
URL : www.switronic.com E-MAIL : switches@ms36.hinet.net

本圖面若與目錄之規格尺寸不符，以本圖面規格尺寸為主。
Below is our main specification if different from catalog.

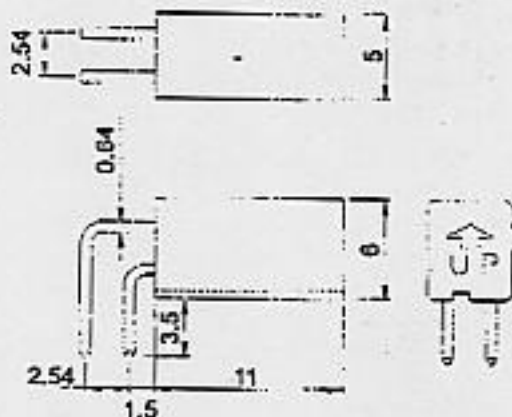
$\theta < 10^\circ$, $\alpha > 10^\circ$



P.C.B. LAYEROUT / TOP VIEW



RIGHT ANGLE TYPE



SPECIFICATION

ELECTRICAL

CONTACT RATING: 25mA, 24V DC.

CONTACT RESISTANCE

INITIAL: 5 Ω Max.

AFTER LIFE TEST: 10 Ω Max.

DIFFERENTIAL ANGLE: REFER TO DRAWING.

INSULATION RESISTANCE: 1,000m Ω Min. AT 100V DC.

DIELECTRIC STRENGTH: 500V DC Min. For 1 Minute.

CAPACITANCE: 5pF Max.

MECHANICAL AND ENVIRONMENTAL

TEMPERATURE RANGE

OPERATING: -25°C To +70°C.

STORAGE: -40°C To +85°C.

PULL FORCE OF TERMINAL: 500g For 1 Minute.

OPERATION LIFE: 100,000 Cycles.

HUMIDITY: 95%RH, 40°C For 96Hrs.

VIBRATION: PER MIL-STD-202F, METHOD 204D.

SOLDERABILITY: AFTER FLUX 230 \pm 5°C For 5 \pm 0.5 sec

95% COVERAGE

SOLDERING HEAT RESISTANCE: 183 °C SOLDERING TIN(83Sn/17Pb).

SOLDERING IRON 350 \pm 5°C.

3 sec Max.

MATERIAL

BODY: GLASS-FIBER POLYAMIDE, UL 94V-0.

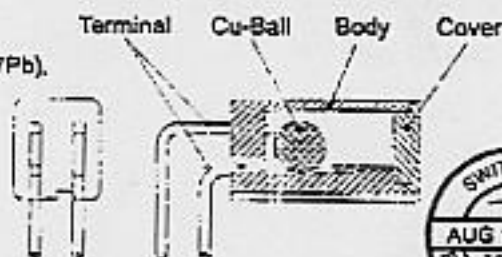
COVER: GLASS-FIBER POLYAMIDE, UL 94V-0.

TERMINAL: COPPER ALLOY, GOLD PLATED OVER NICKEL.

CU-BALL: COPPER ALLOY, GOLD PLATED OVER NICKEL.

TOLERANCE: XX = \pm 0.1mm, X = \pm 0.2mm, X. = \pm 0.3mm.

STRUCTURAL DRAWING



產品 PRODUCT		ROLL BALL SWITCH		型號 MODEL NO.	RBS040200
比例 SCALE	單位 UNIT	版本 VER	日期 DATE	SWITRONIC 一綺電子企業股份有限公司 (110) 台北市信義路4段415號12樓之2 12F-2 NO. 415, SEC.4, HSIN YI ROAD, TAIPEI, TAIWAN TEL: 886-2-27290229 (Rep.) FAX: 886-2-27582086 E-Mail: switches@ms35.hinet.net	
2.3 : 1	mm	V2.0	2003.8.15		
工程 APPROVED	校核 CHECKED	製圖 DRAWN			
Jamson Hsu	Margaret Lee	Alice Lin		SWITRONIC INDUSTRIAL CORP. Switches ISO 9001	