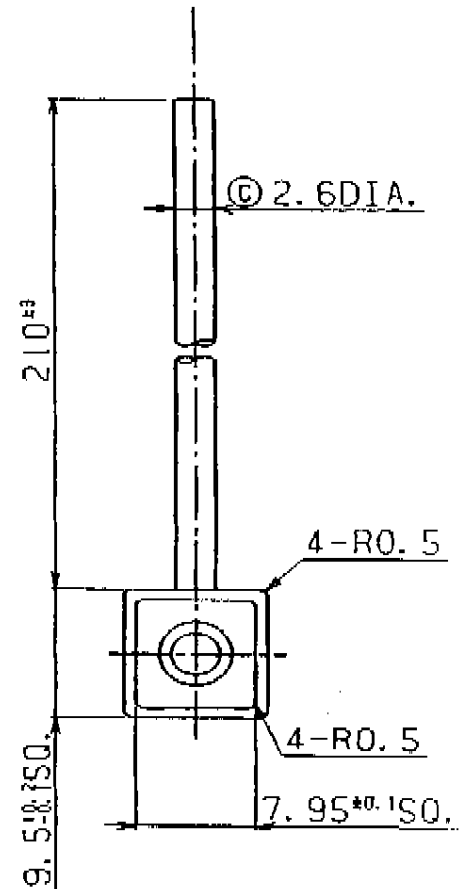
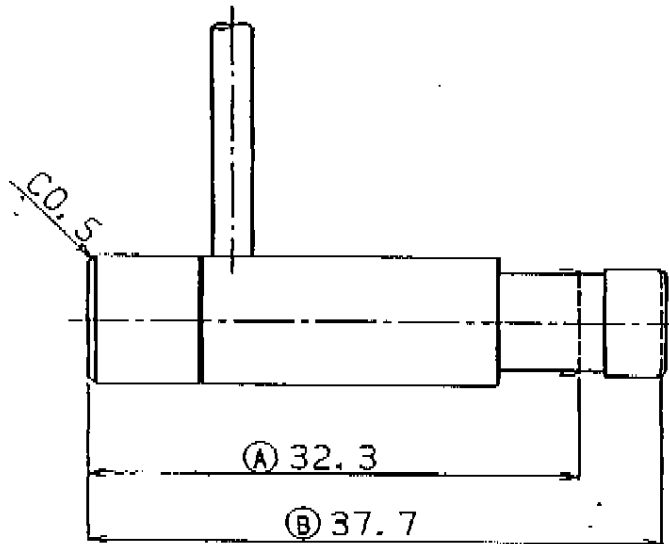
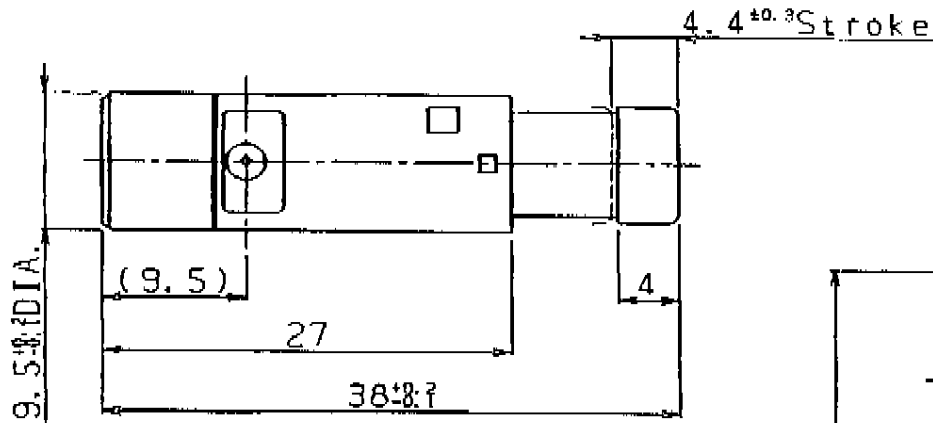


- |                        |                                    |
|------------------------|------------------------------------|
| 1. Subject             | Igniter                            |
| 2. Type                | PR81E 210                          |
| 3. Shape and dimension | As shown in the drawing PR81E 210. |
| 4. Main characteristic |                                    |
| 4-1 Output Voltage     | More than 150(kV)                  |
| 4-2 Operating force    | Less than 25(kg)                   |
| 4-3 Operating stroke   | 4.4±0.3(mm)                        |
| 4-4 Durability         |                                    |

After the continuous driving of 30,000 strokes at the speed of two driving a second under the normal temperature, the output voltage to be more than 135(kV).

Note : The output voltage is to be measured with a oscilloscope using a divider D-401 made by Iwaki-Tsushinki Co, or others having comparable performances.

The electrode terminal should be connected directly to the input terminal of the divider.



- (A) : Until stopper position
- (B) : Until reset position
- (C) : Lead wire. EPDM rubber insulated wire.

正	5		
	4		
	3		
	2		
	1		

Check 製 Drawn 数 R Scale 名 Title  
 図 1 File 図 1 Resized \* 2/1 名 I G N I T E R

仕 Finish  
 上  
 材 Material  
 ..