

## Linear actuator DSAK4

The electric linear actuator DSAK4 is suitable for a variety of positioning tasks.

Equipped with a trapezoidal screw spindle (ACME screw), these are small, compact DC linear drives.

By means of an integrated diode circuit, the direction is reversed quickly by simple voltage reversal of the DC motor.

The DSAK4 types have two integrated, non-adjustable limit switches directly connected to the DC motor.

Overloading of the drive can be prevented by separate monitoring and limiting of the current.

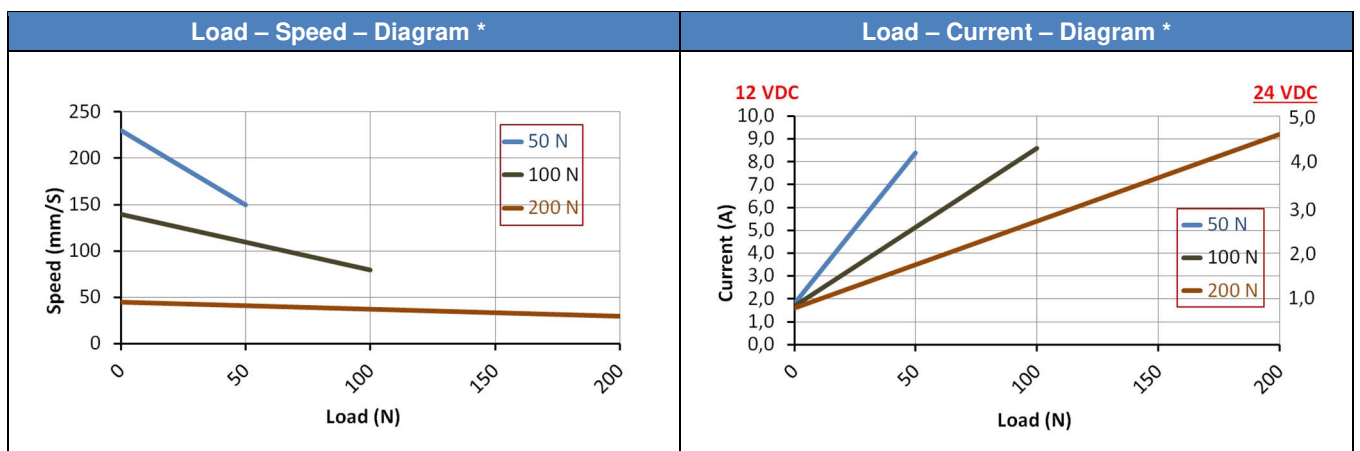


### Type code (all options can be combined)

DSAK4	-	12	-	10	-	200	-	IP54
<b>Type</b>		<b>Input voltage</b>		<b>Load</b>		<b>Stroke</b>		<b>IP Code</b>
		12 Vdc		50 N		50 mm		
		24 Vdc		100 N		100 mm		
				200 N		200 mm		
						300 mm		
						500 mm		

### Performance data: Load – Speed – Current

Dynamic load (N)	Typical speed * (mm/s)		Typical current * (A)			
	minimum load	maximum load	minimum load		maximum load	
			12 Vdc	24 Vdc	12 Vdc	24 Vdc
50	230	140	1.8	0.9	8.4	4.2
100	140	80	1.7	0.85	8.6	4.3
200	45	25	1.6	0.8	9.2	4.6



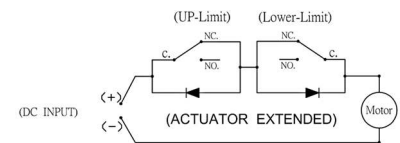
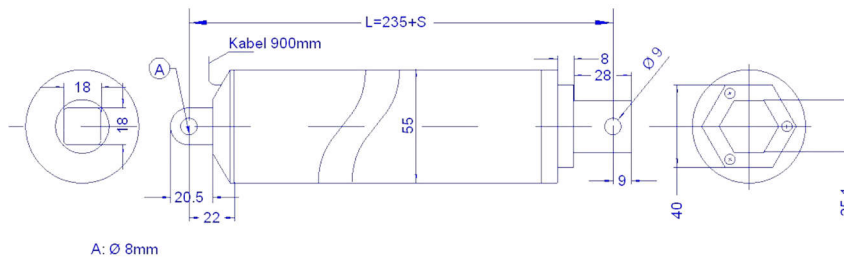
(\* Average values)

## Additional technical specifications

- Thrust and tensile load up to 200 N
- Static load 400 N (by load 200 N)
- Working temperature -26 °C - 65 °C
- Operating voltage: 12 Vdc and 24 Vdc
- Duty cycle: 20 %
- Integrated, non-adjustable limit switches
- IP Code IP54 for all models

## Dimensions

Dimensions (length) in mm					
Stroke (S)	50	100	200	300	500
(L) retracted	285	335	435	535	735
extended	335	435	635	835	1,235



Red wire on “-” and black wire on “+”:  
Actuator extends.

Black wire on “-” and red wire on “+”:  
Actuator retracts.

Cable length: 900 mm

## Weight

Stroke	50	100	200	300	500
Weight in kg	1.52	1.70	2.00	2.30	2.85


## Installation instructions

It must be ensured that the load is not greater than shown in the diagram. To protect against overload, the voltage must be switched off when the maximum rated current is reached. This can be read in the load-current diagram depending on the selected reduction ratio. Please note the correct supply voltage, which is indicated on the electric linear actuator.

The piston rod extends when the red wire is connected to positive and the black wire to negative. For the retraction of the piston rod, positive must be reversed with negative. The movement always stops automatically when the built-in limit switches are reached or when the voltage is interrupted. The limit switches cannot be changed by the customer.

The load must always be centered in the direction of movement. Transverse forces must be avoided. They shorten the service life and can impede the function or lead to irreparable damage in extreme cases.

**CAUTION:** The limit switches have no on/off function for the linear actuator. Therefore, the voltage must be immediately disconnected after the limit switches have been triggered, or the piston must be moved out of the end position in a timely manner

 MSW Motion Control GmbH	<b>Drive System Europe by MSW®</b> A trade mark of MSW Motion Control GmbH	
	MSW Motion Control GmbH Vertriebsgesellschaft Schloßstr. 32/34, 33824 Werther (Westf.) Germany	<a href="mailto:anfrage@msw-motion.de">anfrage@msw-motion.de</a> <a href="http://www.msw-motion.de">www.msw-motion.de</a> Tel.: +49 (0)5203 919200