

Inline terminal - IB IL AO 2/SF-2MBD-PAC - 2862194

Please be informed that the data shown in this PDF Document is generated from our Online Catalog. Please find the complete data in the user's documentation. Our General Terms of Use for Downloads are valid (<http://download.phoenixcontact.com>)



Inline analog output terminal, complete with accessories (plug and labeling field), 2 output, 0 - 20 mA, 4 - 20 mA, 0 - 10 V, transmission speed 2 Mbaud, 2-conductor connection system

Product Features

- Short update time of < 1 ms
- Short-circuit-proof current outputs
- Bipolar outputs
- Measured value acquisition with 16-bit resolution

Key commercial data

package_quantity	1
GTIN	4017918977689

Technical data

Note:

Utilization restriction	EMC: class A product, see manufacturer's declaration in the download area
--------------------------------	---

Dimensions

Width	48.8 mm
Height	136.8 mm
Depth	71.5 mm

Ambient conditions

Ambient temperature (operation)	-25 °C ... 55 °C
Ambient temperature (storage/transport)	-25 °C ... 85 °C
Permissible humidity (operation)	10 % ... 95 % (according to DIN EN 61131-2)
Permissible humidity (storage/transport)	10 % ... 95 % (according to DIN EN 61131-2)
Air pressure (operation)	70 kPa ... 106 kPa (up to 3000 m above sea level)
Air pressure (storage/transport)	70 kPa ... 106 kPa (up to 3000 m above sea level)
Degree of protection	IP20

General

Weight	125 g
Mounting type	DIN rail
Protection class	III, IEC 61140, EN 61140, VDE 0140-1

Inline terminal - IB IL AO 2/SF-2MBD-PAC - 2862194

Technical data

General

Test section	7.5 V supply (bus logic), 24 V supply U_{ANA} / I/O 500 V AC 50 Hz 1 min
Test section	7.5 V supply (bus logic), 24 V supply U_{ANA} /functional earth ground 500 V AC 50 Hz 1 min
Test section	24 V supply (I/O) / functional earth ground 500 V AC 50 Hz 1 min

Interfaces

Name	Inline local bus
Connection method	Inline data jumper
Transmission speed	2 MBit/s
Transmission physics	Copper

Inline potentials

Communications power U_L	7.5 V DC (via voltage jumper)
Current consumption from U_L	max. 75 mA
Current consumption from U_L	typ. 60 mA
I/O supply voltage U_{ANA}	24 V DC
Current consumption from U_{ANA}	max. 95 mA
Current consumption from U_{ANA}	typ. 75 mA

Analog outputs

Number of outputs	2
Connection method	Spring-cage connection with direct plug-in method
Connection method	2-wire (shielded)
Output name	Analog outputs
D/A conversion time	< 100 μ s
D/A resolution	16 bit
Type of protection	Short-circuit protection of outputs
Representation of output values	16 bits (15 bits + sign)
DAC resolution	16 Bit
Process data update	< 1 ms
Current output signal	0 mA ... 20 mA
Current output signal	4 mA ... 20 mA
Load/output load current output	> 500 Ω
Voltage output signal	0 V ... 10 V
Load/output load voltage output	> 2 k Ω 0.03%
Precision	typ. 0.01 % (of output range final value)
Precision	typ. 0.008 % (of output range final value)

classifications

eCl@ss

eCl@ss 4.0	27250303
eCl@ss 4.1	27250303

Inline terminal - IB IL AO 2/SF-2MBD-PAC - 2862194

classifications

eCl@ss

eCl@ss 5.0	27250303
eCl@ss 5.1	27242601
eCl@ss 6.0	27242601
eCl@ss 7.0	27242601
eCl@ss 8.0	27242601

ETIM

ETIM 2.0	EC001431
ETIM 3.0	EC001596
ETIM 4.0	EC001596
ETIM 5.0	EC001596

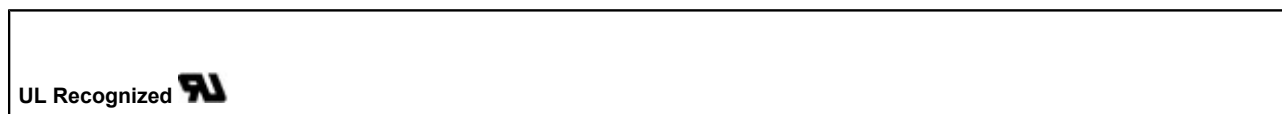
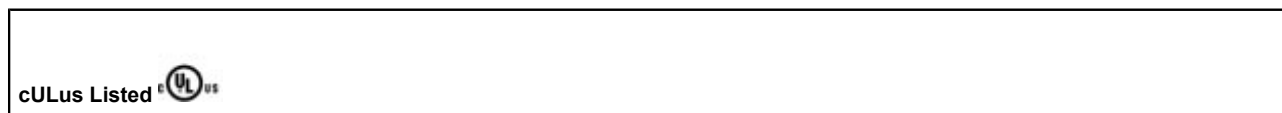
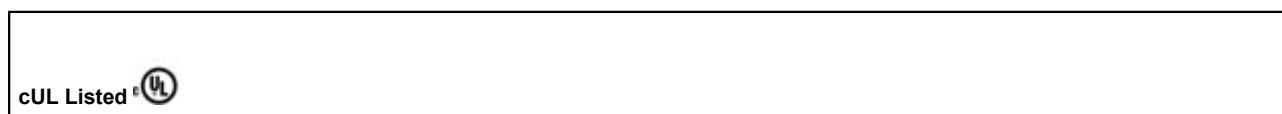
UNSPSC

UNSPSC 6.01	43172015
UNSPSC 7.0901	43201404
UNSPSC 11	43172015
UNSPSC 12.01	43201404
UNSPSC 13.2	43201404

approvals

UL Listed / cUL Listed / cULus Listed / UL Recognized / cUL Recognized / cULus Recognized /

Approval details



Inline terminal - IB IL AO 2/SF-2MBD-PAC - 2862194

approvals

cUL Recognized 

cULus Recognized 

accessories

Connector set

IB IL AO/CNT-PLSET - 2732664



Labeling panel

IB IL FIELD 2 - 2727501



Terminal marking

ESL 62X10 - 0809492



ZBF 6:UNBEDRUCKT - 0808710



Inline terminal - IB IL AO 2/SF-2MBD-PAC - 2862194

accessories

ZBFM 6/WH:UNBEDRUCKT - 0803618



Plug

IB IL SCN-6 SHIELD - 2726353



IB IL SCN-8 - 2726337



IB IL SCN-8-CP - 2727608



Marker pen

X-PEN 0,35 - 0811228



Inline terminal - IB IL AO 2/SF-2MBD-PAC - 2862194

accessories

B-STIFT - 1051993



accessories

ZBF 6:SO/CMS - 0808778



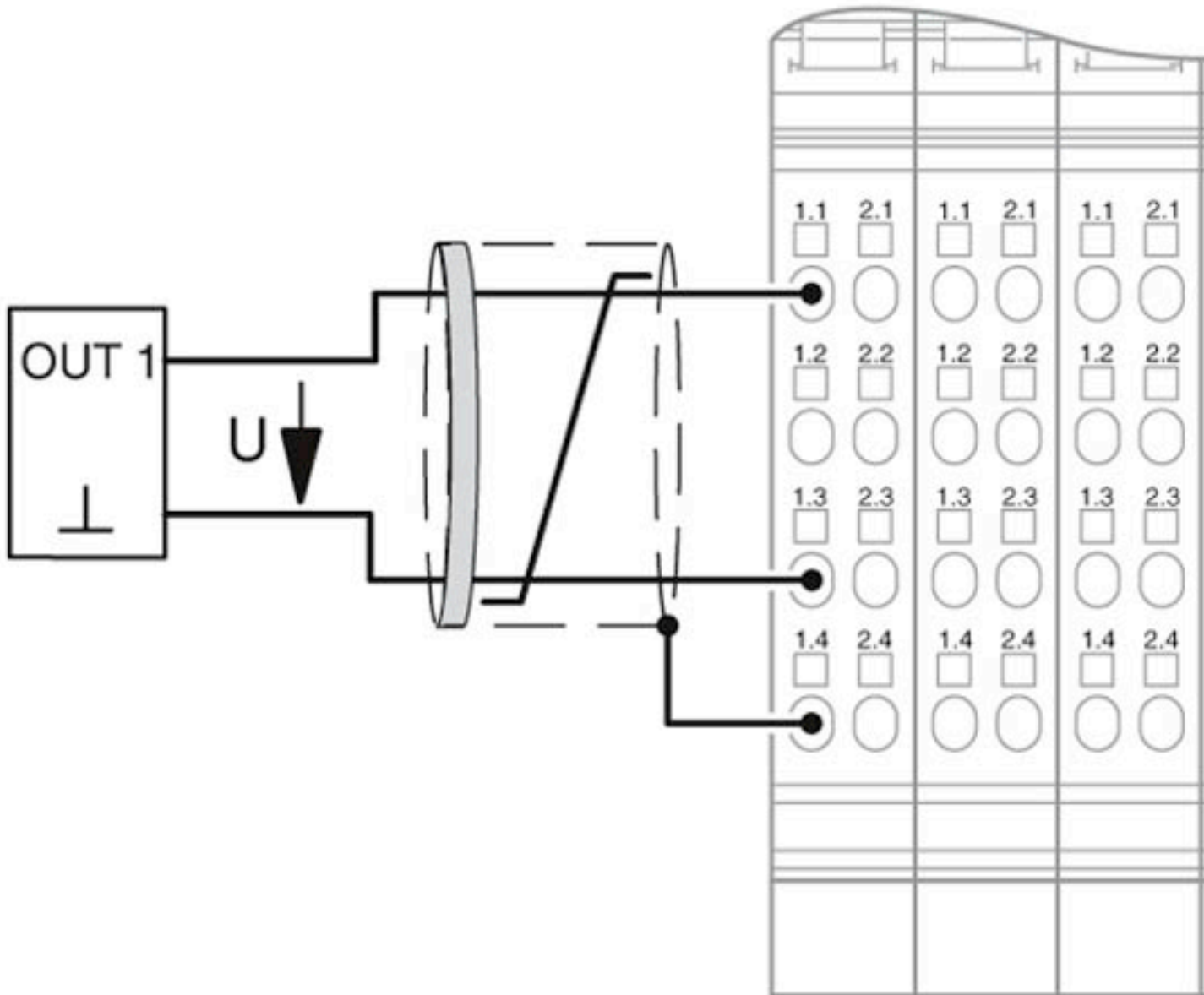
ZBFM 6:SO/CMS - 0803650



Drawings

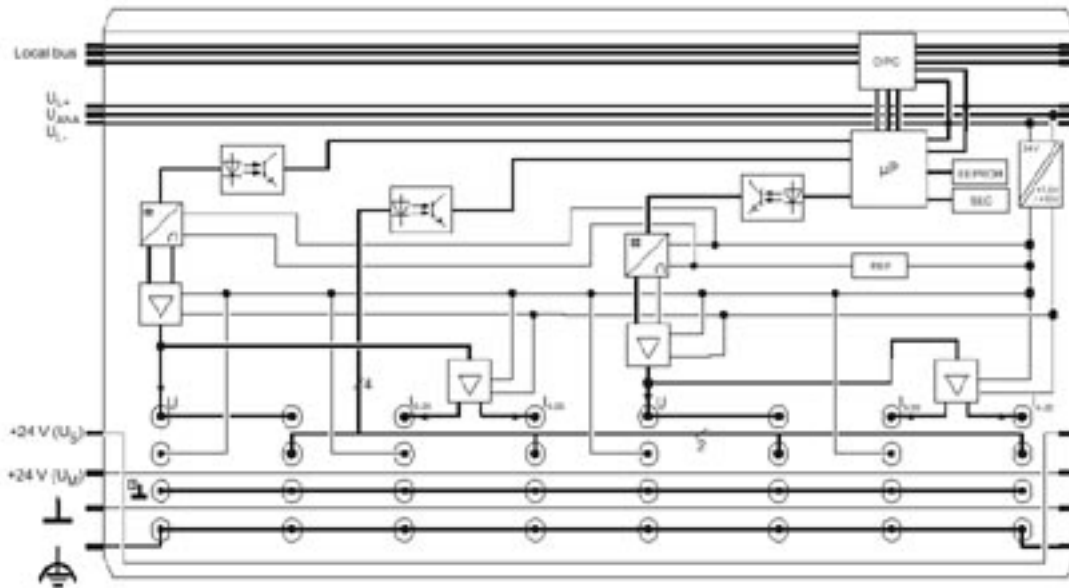
Inline terminal - IB IL AO 2/SF-2MBD-PAC - 2862194

Connection diagram



Inline terminal - IB IL AO 2/SF-2MBD-PAC - 2862194

Block diagram



Dimensioned drawing

