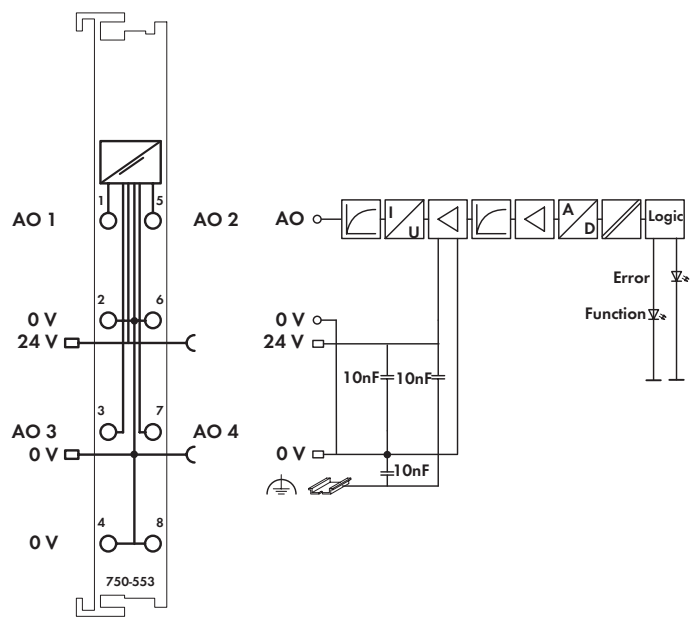
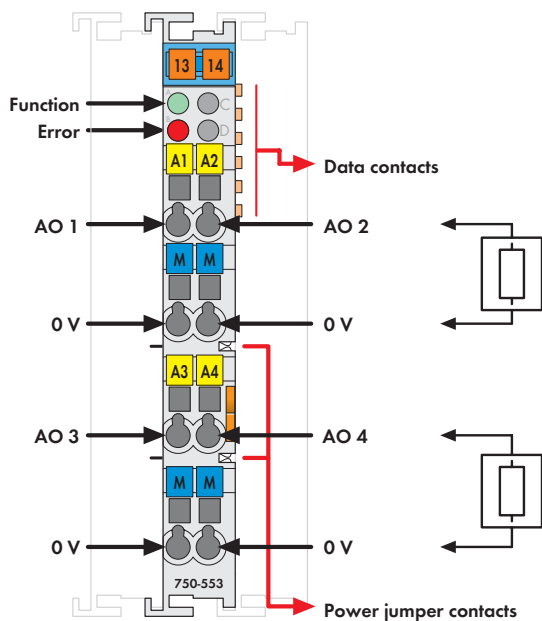


4-Channel Analog Output Module 0/4-20 mA




Delivery without Mini WSB marker

The analog output module creates a standardized signal of 0-20 mA or 4-20 mA.

The output signal is electrically isolated and will be transmitted with a resolution of 12 bits.

“Current” analog output modules use power derived from the field side (loop powered).

The output channels have one common ground potential.

| Description | Item no. | Pack. unit |
|---|--|------------|
| 4AO 0-20mA | 750-553 | 1 |
| 4AO 4-20mA | 750-555 | 1 |
| | | |
| | | |
| | | |
| | | |
| | | |
| | | |
| | | |
| Accessories | Item no. | Pack. unit |
| Miniature WSB Quick marking system | | |
|  plain | 248-501 | 5 |
| with marking | see Full Line Catalog W5 Volume 3, pages 214 ... 215 | |
| | | |
| | | |
| Approvals | | |
| Series 750 | | |
| UL 508 | | |
| EN 50021 | II 3 G EEx nA II T4 | |
| UL 1604 | Class I Div2 ABCD T4A | |
| Conformity marking | CE | |

| Technical Data | |
|------------------------------------|---|
| No. of outputs | 4 |
| Current consumption typ (internal) | 60 mA |
| Voltage supply | via system voltage DC/DC |
| Signal current | 0 mA ... 20 mA (750-553) 4 mA ... 20 mA (750-555) |
| Load impedance | either 0 ... 300 Ω or 300 ... 600 Ω (use same range of impedance for all loads!) |
| Resolution | 12 bits |
| Conversion time (typ) | 10 ms |
| Output filter settle time typ. | 100 ms |
| Measuring error (25 °) | < ± 0.1 % of the full scale value |
| Temperature coefficient | < ± 0.01 % /K of the full scale value |
| Isolation | 500 V system / supply |
| Bit width | 4 x 16 bits data 4 x 8 bits control / status (option) |
| Wire connection | CAGE CLAMP® |
| Cross sections | 0.08 mm² ... 2.5 mm² / AWG 28 ... 14 |
| Stripped lengths | 8 ... 9 mm / 0.33 in |
| Width | 12 mm |
| Weight | approx. 55 g |
| EMC CE-Immunity to interference | acc. to EN 50082-2 (1996) |
| EMC CE-Emission of interference | acc. to EN 50081-1 (1993) |