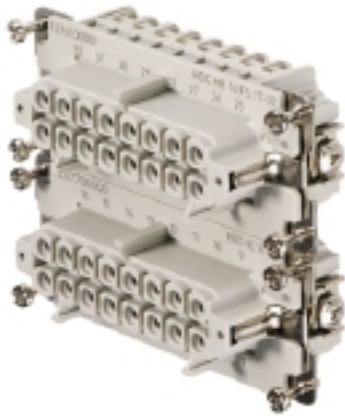


## HDC insert HDC HE 16 FS 17-32

**Weidmüller Interface GmbH & Co. KG**  
 Klingenbergstraße 16  
 D-32758 Detmold  
 Germany  
 Fon: +49 5231 14-0  
 Fax: +49 5231 14-292083  
 www.weidmueller.com



For the screw connection, the wire connection level is designed as a screw element. All screw connection elements are equipped with wire protection (with the exception of size 1).

Screw connection

### General ordering data

|            |  |
|------------|--|
| Type       | HDC HE 16 FS 17-32   |
| Order No.  | <a href="#">121610000</a>  |
| Version    | HDC insert, Female, 500 V, 16 A, No. of poles: 16, Screw connection, Size: 6 |
| GTIN (EAN) | 4008190055295  |
| Qty.       | 1 pc(s).   |

**HDC insert**  
**HDC HE 16 FS 17-32**

**Weidmüller Interface GmbH & Co. KG**  
 Klingenbergstraße 16  
 D-32758 Detmold  
 Germany  
 Fon: +49 5231 14-0  
 Fax: +49 5231 14-292083  
 www.weidmueller.com

**Technical data**
**Dimensions and weights**

|            |         |                 |            |
|------------|---------|-----------------|------------|
| Width      | 34 mm   | Width (inches)  | 1.339 inch |
| Height     | 35.2 mm | Height (inches) | 1.386 inch |
| Depth      | 84.5 mm | Depth (inches)  | 3.327 inch |
| Net weight | 100 g   |                 |            |

**Temperatures**

|                   |                   |
|-------------------|-------------------|
| Limit temperature | -40 °C ... 125 °C |
|-------------------|-------------------|

**Environmental Product Compliance**

|            |                |
|------------|----------------|
| REACH SVHC | Lead 7439-92-1 |
|------------|----------------|

**Dimensions**

|                  |         |                   |         |
|------------------|---------|-------------------|---------|
| Height of socket | 35.2 mm | Total length base | 84.5 mm |
|------------------|---------|-------------------|---------|

**General data**

|                              |                     |                                      |   |
|------------------------------|---------------------|--------------------------------------|---|
| Conductor cross-section      | 2.5 mm <sup>2</sup> | Insulating material                  | PC glass-fibre reinforced (UL-listed and railway-certified) |
| Insulating material group    | IIIa                | Insulation strength                  | 10 <sup>10</sup> Ω  |
| Material                     | Copper alloy        | Max. torque for main contact         | 0.55 Nm   |
| Min. torque for main contact | 0.5 Nm              | No. of poles                         | 16  |
| Plugging cycles, silver      | ≥ 500               | Pollution severity                   | 3   |
| Rated current (DIN EN 61984) | 16 A                | Rated impulse voltage (DIN EN 61984) | 6 kV  |
| Rated voltage (DIN EN 61984) | 500 V               | Rated voltage according to UL/CSA    | 600 V AC/DC   |
| Series                       | HE                  | Size                                 | 6   |
| Surface finish               | Silver passivated   | Type                                 | Female  |
| UL 94 flammability rating    | V-0                 | Volume resistance                    | ≤ 2mΩ   |

**Connection data PE**

|   |                     |   |                     |
|---|---------------------|---|---------------------|
| Blade size, crosshead   | size PH1            | Blade size, slotted (PE connection)   | SD 0.8 x 4.0        |
| Connection type PE  | Screw connection    | Fixing screw  | M 4                 |
| Rated cross-section   | 4 mm <sup>2</sup>   | Stripping length PE connection  | 10 mm               |
| Tightening torque, max. PE connection   | 1.5 Nm              | Tightening torque, min. PE connection   | 1.2 Nm              |
| Wire connection cross section, finely stranded, max.                                    | 2.5 mm <sup>2</sup> | Wire connection cross-section, finely stranded with wire-end ferrules DIN 46228/4, max. | 2.5 mm <sup>2</sup> |
| Wire connection cross-section, finely stranded with wire-end ferrules DIN 46228/4, min. | 0.5 mm <sup>2</sup> | Wire connection cross-section, finely stranded, min.                                    | 0.5 mm <sup>2</sup> |
| Wire cross section, AWG (PE), max.  | AWG 12              | Wire cross section, AWG (PE), min.  | AWG 20              |
| Wire cross-section, solid, max.   | 2.5 mm <sup>2</sup> | Wire cross-section, solid, min.   | 0.5 mm <sup>2</sup> |

**HDC insert**  
**HDC HE 16 FS 17-32**

**Weidmüller Interface GmbH & Co. KG**  
 Klingenbergstraße 16  
 D-32758 Detmold  
 Germany  
 Fon: +49 5231 14-0  
 Fax: +49 5231 14-292083  
 www.weidmueller.com

**Technical data****Version**

|   |                     |   |                     |
|---|---------------------|---|---------------------|
| Blade size  | size PZO            | Blade size, slotted (screw connection)  | SD 0.6 x 3.5        |
| Clamping screw  | M 3                 | Conductor cross-section, max.   | 2.5 mm <sup>2</sup> |
| Conductor cross-section, min.   | 0.5 mm <sup>2</sup> | Material  | Copper alloy        |
| Max. torque for main contact  | 0.55 Nm             | Min. torque for main contact  | 0.5 Nm              |
| Size  | 6                   | Stripping length, rated connection  | 9 mm                |
| Surface finish  | Silver passivated   | Type of connection  | Screw connection    |
| Volume resistance   | ≤ 2mΩ               | Wire connection cross section AWG, max.   | AWG 14              |
| Wire connection cross section AWG, min.   | AWG 20              | Wire connection cross section, finely stranded, max.                                    | 2.5 mm <sup>2</sup> |
| Wire connection cross-section, finely stranded with wire-end ferrules DIN 46228/4, max. | 2.5 mm <sup>2</sup> | Wire connection cross-section, finely stranded with wire-end ferrules DIN 46228/4, min. | 0.5 mm <sup>2</sup> |
| Wire connection cross-section, finely stranded, min.                                    | 0.5 mm <sup>2</sup> | Wire cross-section, solid, max.   | 2.5 mm <sup>2</sup> |
| Wire cross-section, solid, min.   | 0.5 mm <sup>2</sup> |   |                     |

**Classifications**

|            |             |            |             |
|------------|-------------|------------|-------------|
| ETIM 3.0   | EC001121    | ETIM 4.0   | EC000438    |
| ETIM 5.0   | EC000438    | ETIM 6.0   | EC000438    |
| UNSPSC     | 30-21-18-01 | eClass 5.1 | 27-14-34-19 |
| eClass 6.2 | 27-26-12-04 | eClass 7.1 | 27-44-02-05 |
| eClass 8.1 | 27-44-02-05 | eClass 9.0 | 27-44-02-05 |
| eClass 9.1 | 27-44-02-05 |            |             |

**Approvals**

Approvals



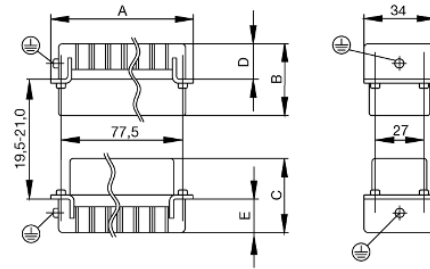
ROHS Conform

**Downloads**

|                         |   |
|-------------------------|---|
| Brochure/Catalogue      | <a href="#">CAT 3 HDC 17/18 EN</a><br><a href="#">FL FIELDWIRING EN</a> |
| Engineering Data        | <a href="#">EPLAN.WSCAD</a>   |
| Engineering Data        | <a href="#">STEP</a>  |
| Technical Documentation | <a href="#">1216100000_HDC_HE_16_FS_17-32_STP_Blatt_1.pdf</a>           |

**Data sheet****HDC insert  
HDC HE 16 FS 17-32**

**Weidmüller Interface GmbH & Co. KG**  
Klingenbergstraße 16  
D-32758 Detmold  
Germany  
Fon: +49 5231 14-0  
Fax: +49 5231 14-292083  
www.weidmueller.com

**Drawings**

# Tightening torques and screwing tools

| Screw size                     | Connector type                          | Dia. tightening torque in Nm  | Recommended blade inserts and AF size for hexagon socket |                                   |
|--------------------------------|---|---|--|-----------------------------------|
| <b>M 2.5</b>                   | <b>Signal contacts</b>                  |   |  |                                   |
|                                | S 6/6                                   | 0.5 - 0.55  | SD 0.6 x 3.5 mm or PZ0                                   |                                   |
|                                | S 6/12                                  | 0.5 - 0.55  | SD 0.6 x 3.5 mm or PZ0                                   |                                   |
| <b>M 2.9 x 0.5</b>             | <b>Fastening screws</b>                 |   |  |                                   |
|                                | HQ 4/2                                  | 0.8 (plastic) / 1.1 (metal)   | SD 0.6 x 3.5 mm or PH0                                   |                                   |
|                                | HQ 8                                    | 0.8 (plastic) / 1.1 (metal)   | SD 0.6 x 3.5 mm or PH0                                   |                                   |
|                                | HQ 17                                   | 0.8 (plastic) / 1.1 (metal)   | SD 0.6 x 3.5 mm or PH0                                   |                                   |
| <b>M 3</b>                     | <b>Contact screws</b>                   |   |  |                                   |
|                                | HA 3                                    | 0.5 - 0.55  | SD 0.5 x 3.0 mm  |                                   |
|                                | HA 4                                    | 0.5 - 0.55  | SD 0.5 x 3.0 mm  |                                   |
|                                | HA 10 bis HA 48                         | 0.5 - 0.55  | SD 0.6 x 3.5 mm or PH0                                   |                                   |
|                                | HE                                      | 0.5 - 0.55  | SD 0.6 x 3.5 mm or PZ0                                   |                                   |
|                                | HVE                                     | 0.5 - 0.55  | SD 0.6 x 3.5 mm or PZ0                                   |                                   |
|                                | <b>Signal contacts:</b>                 |   |  |                                   |
|                                | S 4/2                                   | 0.5 - 0.55  | SD 0.6 x 3.5 mm or PZ0                                   |                                   |
|                                | S 4/8                                   | 0.5 - 0.55  | SD 0.6 x 3.5 mm or PZ0                                   |                                   |
|                                | <b>PE connection via female contact</b> |   |  |                                   |
|                                | S 4                                     | 0.5 - 0.8   | SD 0.6 x 3.5 mm  |                                   |
|                                | ConCept modular frame, metal            | 0.5 - 0.55  | SD 0.6 x 3.5 mm  |                                   |
|                                | <b>PE terminal</b>                      |   |  |                                   |
|                                | HQ 5                                    | 0.5 - 0.55  | SD 0.6 x 3.5 or 0.8 x 4 mm                               |                                   |
|                                | HQ 7                                    | 0.5 - 0.55  | SD 0.6 x 3.5 or 0.8 x 4 mm                               |                                   |
|                                | <b>Fastening screws</b>                 | 0.5 - 0.55  | SD 0.6 x 3.5 mm or PZ0                                   |                                   |
|                                | <b>Guide pin</b>                        | 0.5 - 0.55  | SD 0.6 x 3.5 mm or PZ0                                   |                                   |
|                                | <b>Guide bush</b>                       | 0.5 - 0.55  | SD 0.6 x 3.5 mm or PZ0                                   |                                   |
|                                | <b>Coding pins</b>                      | 0.5 - 0.55  | SD 0.6 x 3.5 mm or PZ0                                   |                                   |
|                                | <b>M 4</b>                              | <b>Contact screws</b>   |  |                                   |
|                                |   | HSB   | 1.2 - 1.5  | SD 0.6 x 3.5 or 0.8 x 4 mm or PZ1 |
|                                |   | <b>PE connection via male contact</b>   |  |                                   |
| S 4                            |   | 0.5 - 0.8   | SD 0.6 x 3.5 mm  |                                   |
| ConCept modular frame, metal   |   | 1.2 - 1.5   | SD 0.6 x 3.5 mm  |                                   |
| <b>PE terminal</b>             |   |   |  |                                   |
| HA                             |   | 1.2 - 1.5   | SD 0.6 x 3.5 or 0.8 x 4 mm or PH1                        |                                   |
| HE                             |   | 1.2 - 1.5   | SD 0.6 x 3.5 or 0.8 x 4 mm or PH1                        |                                   |
| HEE                            |   | 1.2 - 1.5   | SD 0.6 x 3.5 or 0.8 x 4 mm or PH1                        |                                   |
| HVE                            |   | 1.2 - 1.5   | SD 0.6 x 3.5 or 0.8 x 4 mm or PH1                        |                                   |
| HD                             |   | 1.2 - 1.5   | SD 0.6 x 3.5 or 0.8 x 4 mm or PZ1                        |                                   |
| HDD                            |   | 1.2 - 1.5   | SD 0.6 x 3.5 or 0.8 x 4 mm or PZ1                        |                                   |
| S 6/6 (for signal contacts)    |   | 1.2 - 1.5   | 0.8 x 4 mm or PZ1  |                                   |
| ConCept modular frame, plastic |   | 1.2 - 1.5   | 0.8 x 4 mm or PZ1  |                                   |
| <b>M 5</b>                     |   | <b>PE terminal</b>  |  |                                   |
|                                |   | HSB   | 2 - 2.5  | SD 1 x 5.5 mm or PZ2              |
|                                |   | S 4/0 (Screw connection)  | 2 - 2.5  | SD 1.2 x 6.5 mm or PH2            |
|                                | S 4/0 (Axial screw connection)          | 2 - 2.5   | SD 0.8 x 4 mm or PZ 2                                    |                                   |
|                                | S 4/2                                   | 2 - 2.5   | SD 1.2 x 6.5 mm or PH2                                   |                                   |
|                                | S 4/8                                   | 2 - 2.5   | SD 1.2 x 6.5 mm or PH2                                   |                                   |
|                                | S 6/12                                  | 2 - 2.5   | SD 0.8 x 4 mm or PZ 2                                    |                                   |
|                                | S 6/36                                  | 2 - 2.5   | SD 1.2 x 6.5 mm or PH2                                   |                                   |
|                                | S 8/24                                  | 2 - 2.5   | SD 1.2 x 6.5 mm or PH2                                   |                                   |
|                                | S 12/2                                  | 2 - 2.5   | SD 1.2 x 6.5 mm or PH2                                   |                                   |
|                                | <b>M 6</b>                              | <b>Power contacts</b>   |  |                                   |
| S 4/0 (Screw connection)       |   | 1.2 (1.5 mm <sup>2</sup> ) / 2 (2.5 mm <sup>2</sup> ) / 3 (4-16 mm <sup>2</sup> ) | SD 0.8 x 4 mm  |                                   |
| S 4/2                          |   | 1.2 (1.5 mm <sup>2</sup> ) / 2 (2.5 mm <sup>2</sup> ) / 3 (4-16 mm <sup>2</sup> ) | SD 0.8 x 4 mm  |                                   |
| S 4/8                          |   | 1.2 (1.5 mm <sup>2</sup> ) / 2 (2.5 mm <sup>2</sup> ) / 3 (4-16 mm <sup>2</sup> ) | SD 0.8 x 4 mm  |                                   |
| <b>M 7 x 0.75</b>              | <b>Power contacts</b>                   |   |  |                                   |
|                                | S 4                                     | 1.1 - 1.7   | SW 2   |                                   |
|                                | S 6/6 (+ PE)                            | 6 - 8   | SW 4   |                                   |
| <b>M 8 x 0.75</b>              | <b>Power contacts</b>                   |   |  |                                   |
|                                | S 6/12                                  | 1.1 - 1.7   | SW 2   |                                   |
|                                | S 8/0 (+ PE)                            | 6 (10-16 mm <sup>2</sup> ) - 7 (25 mm <sup>2</sup> )                              | SW 4   |                                   |
| <b>M10 x 1</b>                 | <b>Power contacts</b>                   |   |  |                                   |
|                                | S 4/0 (Axial connection)                | 2 - 3   | SW 3   |                                   |

Increasing the tightening torque does not improve the contact resistance. The stated torque settings offer optimal mechanical, thermal and electrical conditions. Exceeding the recommended values may even damage the conductor and terminal.