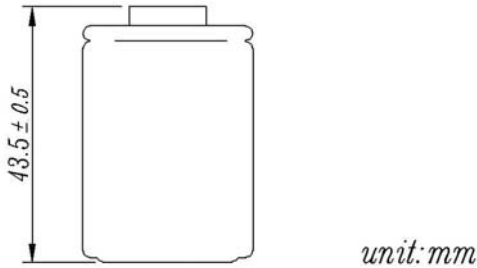
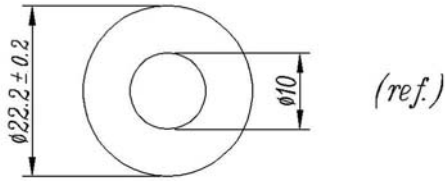


# Sealed Rechargeable Cylindrical cell Nickel Metal Hydride

SC-3700 mAh



## Date Sheet

**Type**-----EnrichpowerSC3700  
**System**-----Sealed rechargeable Ni-MHCylindrical cell  
**Nominal Voltage**-----1.2V  
**Application**-----Discharge current 370mA to 30A (Continuous)  
**Capacity** (discharged at 0.2C to 1.0v at 20°C)  
 Nominal 3700mAh  
 Minimum 3600mAh  
 Typical 3700mAh  
**Internal resistance** (at 1 kHz)  
 Fully charged, 20°C (approx)---4~6mΩ  
**Weight approx**-----60g

**Dimensions**(including shrink sleeve)  
 -Diameter -----22.2 (±0.2mm)  
 -Height -----43.5(±0.5mm)

**Cd content(%cell w)**:-----0%  
**Typical Discharge time&Avg.Voltage** (20°C)  
 30A--440S--1.160V (TURBOMATCHER, discharged at 30A to 0.9v at 20°C)

**Max.discharge current**(continuous)-----20C  
**Charging conditions**(20°C)

standard charge-----370mA 14h  
 quick charge-----3700mA 1.1h  
 fast charge -----2A to 6A

Charge termination control recommended control parameter

- Δ V 5mV  
 DT/dt 0.8°C/min(0.5-1C)  
 0.8°C-1°C/min(>1C)  
 TCO 40-45°C

Timer 105%nominal input

**Continuous** 100mA maximum current for 1 year  
**Overcharge** No conspicuous deformation and/or leakage

**Max.charging voltage** 1.5V at 370mA charging

**Operation temperatures**(recommended)

Storage----- -20°C up to +35°C

Discharge----- -20°C up to +50°C

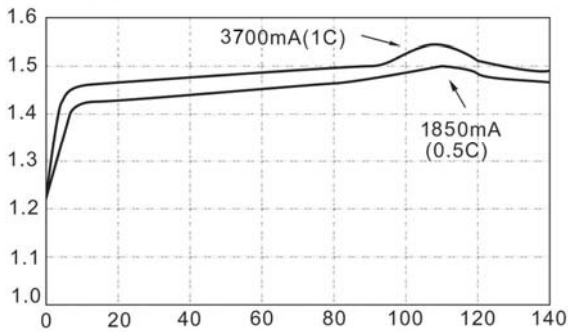
standard charge----- 0°C up to +40°C

quickcharge,fastcharge-- -10°C upto +40°C

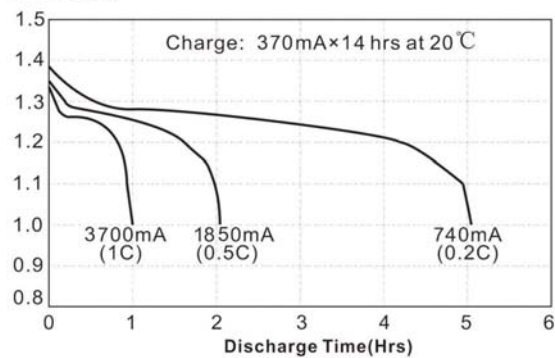
permanent charge----- +10°C up to +45°C

**Life expectancy**(20°C)----->500 cycles

**Fast Charge (Charge Control required)**  
**Voltage(V)**



**Low Rate Discharge**  
**Voltage(V)**



**High Rate Discharge**  
**Voltage (V)**

