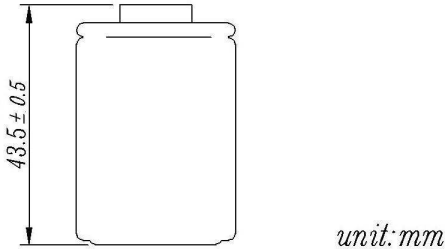
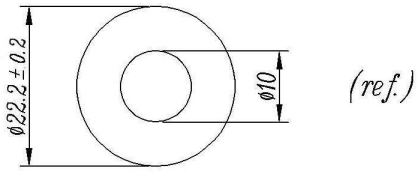


# Sealed Rechargeable Cylindrical cell Nickel Metal Hydride

SC-3000 mAh



## Date Sheet

**Type**-----EnrichpowerSC3000  
**System**-----Sealed rechargeable Ni-MHCylindrical cell  
**Nominal Voltage**-----1.2V  
**Application**-----Discharge current300mA to 30A (Continuous)

**Capacity** (discharged at 0.2C to 1.0v at 20°C)

Nominal 3000mAh

Minimum 2900mAh

Typical 3000mAh

**Internal resistance** (at 1 kHz)

Fully charged,20°C(approx)---4 ~ 6mΩ

**Weight approx**-----53g

**Dimensions**(including shrink sleeve)

-Diameter -----22.2(±0.2mm)

-Height -----43.5(±0.5mm)

**Cd content(%cell w):**-----0%

**Typical Discharge time&Avg.Voltage** (20°C)

30A--350S--1.15V (TURBOMATCHER,discharged at 30A to 0.9v at 20°C)

**Max.discharge current**(continuous)-----20C

**Charging conditions**(20°C)

standard charge-----300mA 14h

quick charge-----3000mA 1.1h

fast charge -----2A to 6A

Charge termination control recommended control parameter

-ΔV 5mV

DT/dt 0.8°C/min(0,5-1C)

0,8°C-1°C/min(>1C)

TCO 40-45°C

Timer 105% nominal input

**Continuous** 100mA maximum current for 1 year

**Overcharge** No conspicuous deformation and/or leakage

**Max.charging voltage** 1.5V at 300mA charging

**Operation temperatures**(recommended)

Storage----- -20°C up to +35°C

Discharge----- -20°C up to +50°C

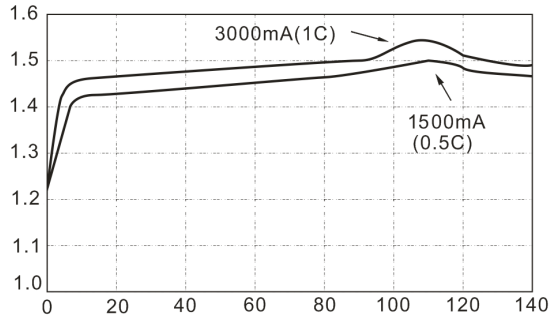
standard charge----- 0°C up to +40°C

quickcharge,fastcharge—10°C upto+40°C

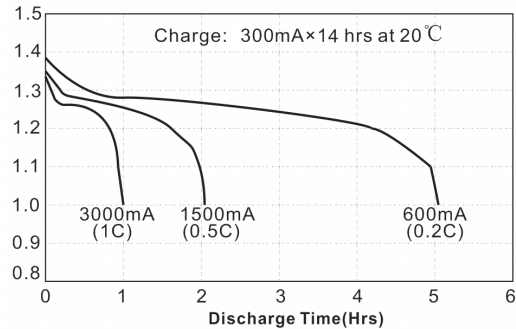
permanent charge-----+10°C up to +45°C

**Life expectancy**(20°C)----->500 cycles

**Fast Charge (Charge Control required)**  
Voltage(V)



**Low Rate Discharge**  
Voltage(V)



**High Rate Discharge**  
Voltage (V)

