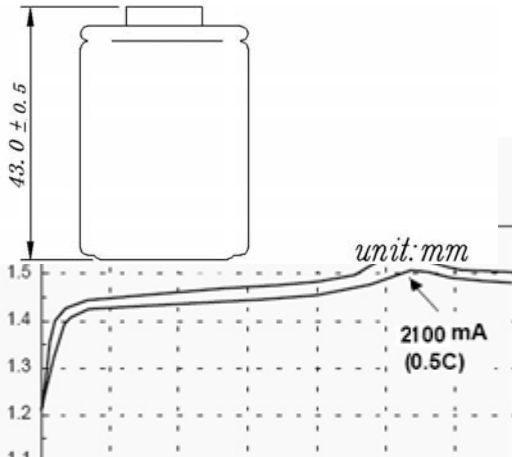
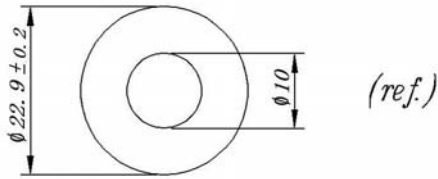
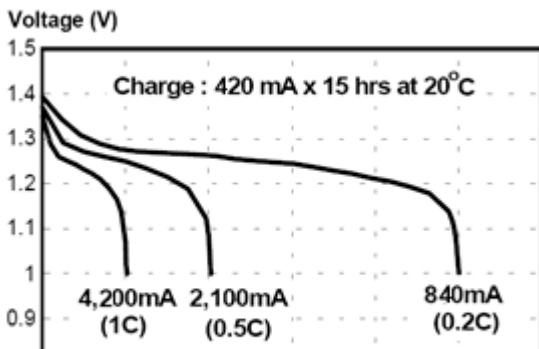


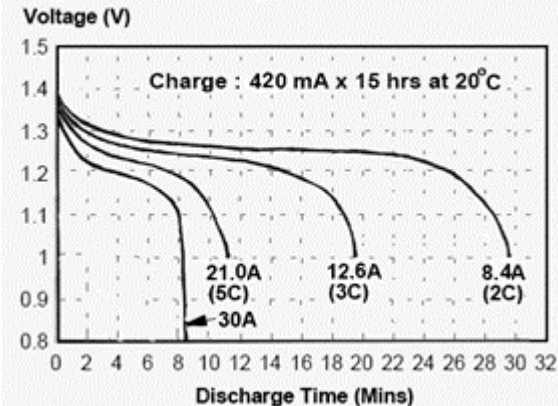
Sealed Rechargeable Cylindrical cell Nickel Metal Hydride
SC-4200 mAh



Low Rate Discharge



High Rate Discharge



Date Sheet

Type-----EastpowerSC4200
System-----Sealed rechargeable Ni-MHCylindrical cell
Nominal Voltage-----1.2V
Application-----Discharge current 420mA to 30A (Continuous)
Capacity (discharged at 0.2C to 1.0v at 20□)
 Nominal 4200mAh
 Minimum 4100mAh
 Typical 4200mAh
Internal resistance (at 1 kHz)
 Fully charged, 20□(approx)---1.6□1.8mΩ
Weight approx-----69g
Dimensions(including shrink sleeve)
 -Diameter -----22.9 (±0.2mm)
 -Height -----43.0(±0.5mm)
Cd content(%cell w):-----0%
Typical Discharge time&Avg. Voltage (20□)
 30A--510S--1.235V (TURBOMATCHER□discharged at 30A to 0.9v at 20□)
Max.discharge current(continuous)-----20C
Charging conditions(20□)
 standard charge-----420mA 14h
 quick charge-----4200mA 1.1h
 fast charge -----2A to 6A
 Charge termination control recommended control parameter
 -ΔV 5mV
 DT/dt 0.8□/min(0.5-1C)
 0.8□-1□/min(>1C)
 TCO 40-45□
 Timer 105%nominal input
Continuous 100mA maximum current for 1 year
Overcharge No conspicuous deformation and/or leakage
Max.charging voltage 1.5V at 420mA charging
Operation temperatures(recommended)
 Storage-----20□ up to +35□
 Discharge-----20□ up to +50□
 standard charge----- 0□ up to +40□
 quickcharge,fastcharge--10□upto+40□
 permanent charge-----+10□ up to +45□
Life expectancy(20□)----->500 cycles