

**RELEASED
DRAWING**

1

2

3

4

5

A

B

C

D

E

MATERIAL:

HOUSING: NYLON 66 UL94V-0 COLOR: WHITE

PITCH BETWEEN POLES: 5.2mm.

SPECIFICATION:

CURRENT RATING: 2.5A

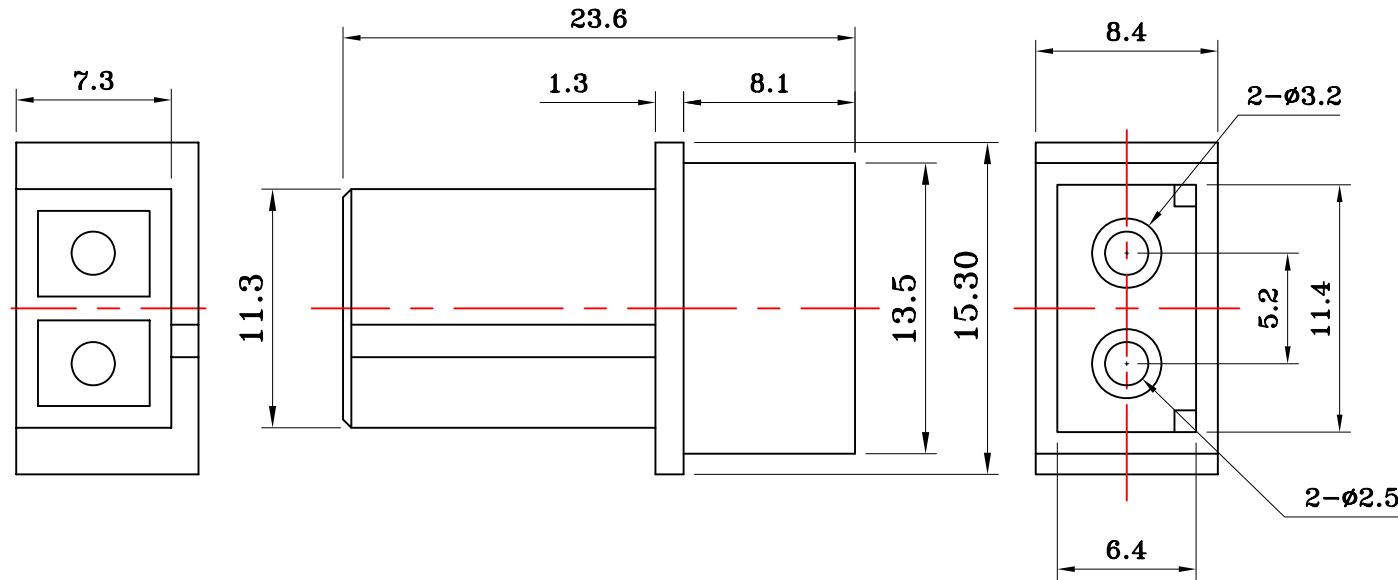
INSULATION RESISTANCE: 1000MΩMIN.

CONTACT RESISTANCE: 20mΩMAX.

OPERATING TEMPERATURE: -25°C~+85°C.

WITHSTAND VOLTAGE: 800V AC/MINUTE

VOLTAGE RATING: 250V AC/DC



NOTES:

1. THIS COMPONENT AND ITS HOMOGENEOUS SUBCOMPONENTS ARE ROHS COMPLIANT.
2. PUT CARDBOARDS IN THE FOUR CORNERS OF INNER CARTON
3. CARTON MATERIAL: K=K.

NOTE:

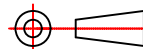
TITLE:
1*2P PITCH 5.2mm H.S.G.

DRAWN: John

CHECKED: Brant

APPROVAL: Sean

TOLERANCES:
DIM. X.X=±0.3
X.XX=±0.15
UNIT: mm
GENERAL ANGLE:
±3°



REV.	DESCRIPTION	ECN	DRAWN	DATE
A	NEW RELEASE		John	Nov.14.2005
REVISIONS				

A

B

C

D

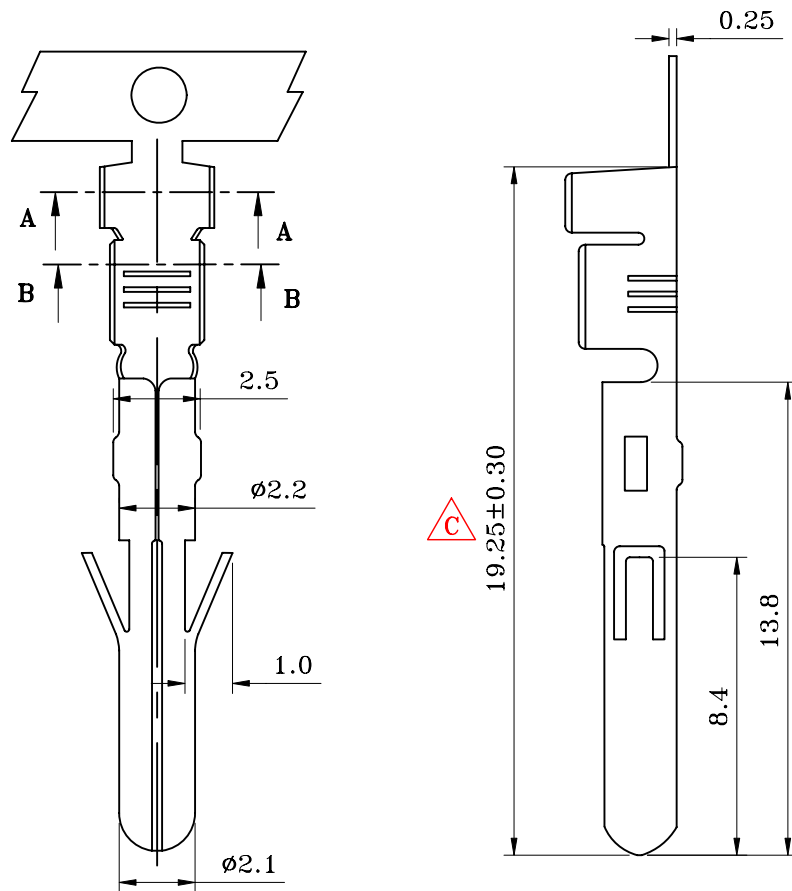
E

1

2

3

4



1.MATERIAL:

1.1 TERMINAL: COPPER ALLOY; T: 0.25mm.

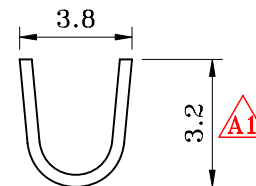
2.FINISH:

2.1 TERMINAL: FULL GOLD FLASH PLATED OVER
30u" MIN. NICKEL UNDERPLATED OVERALL.

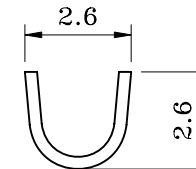
3.SPECIFICATIONS

- 3.1 CURRENT RATING: 4-7 A.
 3.2 VOLTAGE RATING: 300-600 VDC.
 3.3 CONTACT RESISTANCE: 20mΩ MAX.
 3.4 INSULATION RESISTANCE: 1000MΩ MIN DC500V.
 3.5 DIELECTRIC WITHSTANDING VOLTAGE: 800 VAC PER MINUTE.
 3.6 OPERATING TEMPERATURE: -25°C ~ +85°C.
 3.7 WIRE RANGE: 16~22 AWG.

4.NOTE:

4.1 THIS COMPONENT AND ITS HOMOGENEOUS
SUBCOMPONENTS ARE RoHS COMPLIANT.

SECTION: A-A



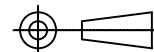
SECTION: B-B

5

REV.	DESCRIPTION	ECN	DRAWN	DATE
C	MODIFY DIMENSION	N0910014	Jack	Nov.03.2009
B	ADD PACKING	N0709018	Jack	Dec.05.2007
A1	CHANGE DIMENSION	N0603120	Jim	Mar.31.2006
A	NEW RELEASE		John	Nov.14.2005

REVISIONS

TOLERANCES:
 DIM. X.X=±0.3
 X.XX=±0.25
 UNIT: mm
 GENERAL ANGLE:
 ±3°



NOTE:

TITLE:
PITCH 5.2mm TERMINAL

DRAWN: Jack

CHECKED: Brant

APPROVAL: Mark