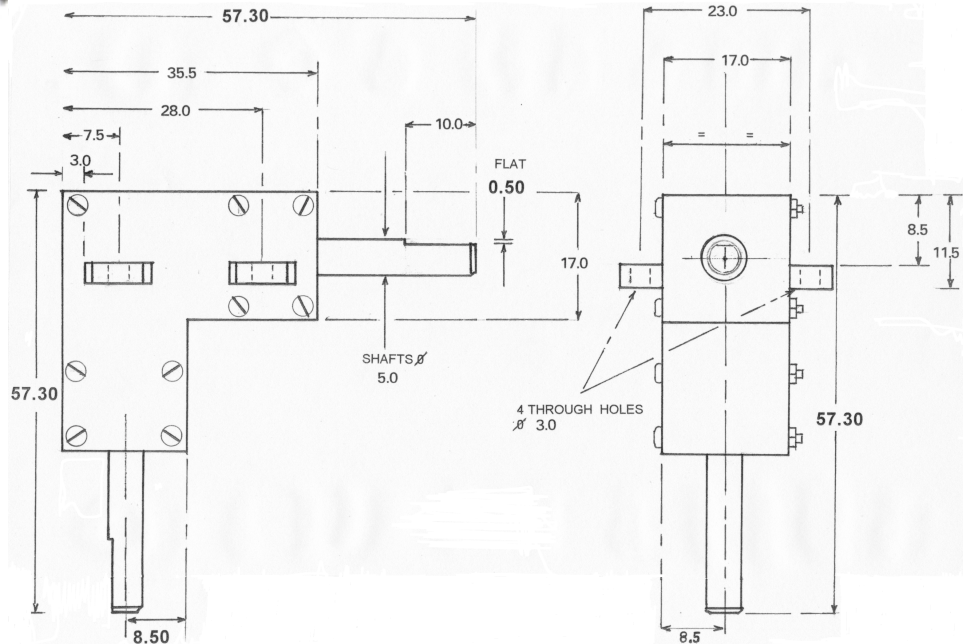


BEVEL GEARBOX. PART NO. 919D24



BEVEL GEARBOX

This unit has steel gears and shafts running in ballraces and scintered bronze bearings, 1 ball race and sintered bearing per shaft. The former act also as thrust races protecting the bevel gears from external pressures of varying loads. The housing mouldings are 30% glass filled nylon for strength and have four pre-drilled mounting holes. Key flats are provided on both shafts.

- * 1:1 gear ratio *
- * Lubricated for life *
- * Designed for rugged service life *

Specification

Weight: 42g

Backlash: 1 deg approx

Max input speed: 5000 r.p.m.

Rated tolerance torque: 7.5 Kg-cm

Max momentary tolerance torque: 22.5 Kg-cm

Material

Case: 30% glass filled nylon

Gear: Mild steel: BS970:part 3:1991:230M07