

**MODEL CRAFT**

**Getriebemotor RB 35, 1:100**

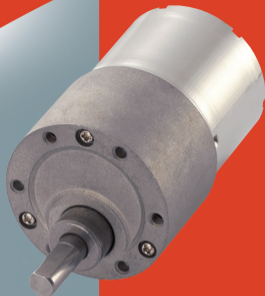
**Gearbox with motor RB 35, ratio 1:100**

**Moteurs réducteurs RB 35, 1:100**

**Transmissiemotor RB 35, 1:100**

**Technical data:**

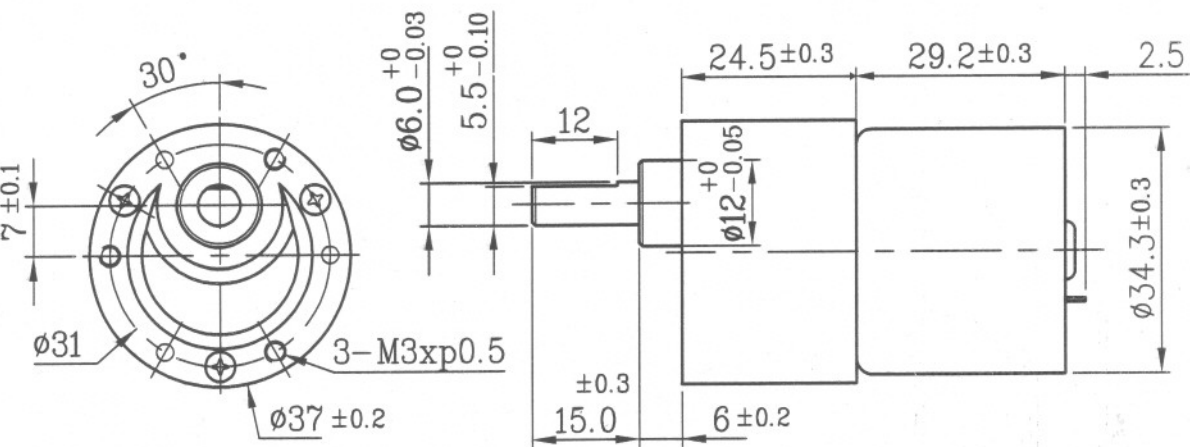
Operating voltage: 12V/DC  
Speed under load: 52rpm  
Idling speed at 12V: 60rpm  
Max. gear load: 18kg/cm  
Steady gear load: 6kg/cm  
Transmission ratio: 1:100  
Dimensions: (Ø x L) 37mm x 74,5mm  
Shaft-Ø: 6mm



B/N 227560

4016138227567

7000064



REDUCTION RATIO: 1/100

OUTPUT SHAFT: STEEL

MOTOR SPECIFICATION: 12V 6000RPM

NO LOAD 60RPM