



MODEL: SP38-12(38AH/20HR) Original SP27-12 (2HR)



Product Specification

Nominal Voltage: 12 V

Rated Capacity:

20Hour Rate (1.9A to 10.5V)	38 AH
10Hour Rate (3.6A to 10.5V)	36 AH
5Hour Rate (6.45A to 10.5V)	32.25 AH
2Hour Rat (13.5A to 10.5V)	27 AH

Dimension and Weight

Length	196mm±1mm
Width	131mm±1mm
Height	159mm±1mm
Total Height	166mm±1mm
Wright(WT)	11.5kg

Internal Resistance: Fully charged Battery ≤15m Ω

Self discharge Rate:20°C, 4% first month, after 1% per month

Operating Temperature Range:

Discharge	-35°C(-31°F) ~50°C(122°F)
Charge	-15°C (5°F)~40°C(104°F)
Storage	-15°C(5°F)~40°C(104°F)

Charging Methods:

Floating Use	13.5V~13.8V(20°C), Compensation coefficient-3mv/cell/°C
Cycling Use	14.4V~15.0V(20°C), Compensation coefficient-5mv/cell/°C
Max Charge Current	0.3C(A)

Case ABS

Applications Electric Vehicle, Solar power, Wind power, Telecom Systems, UPS

General Features

High Corrosion Resistart Performance:Pb-Ca multi-alloy grid
Patented Silicate Compound Electrolyte:Minor acid vapor,
environment friendly.

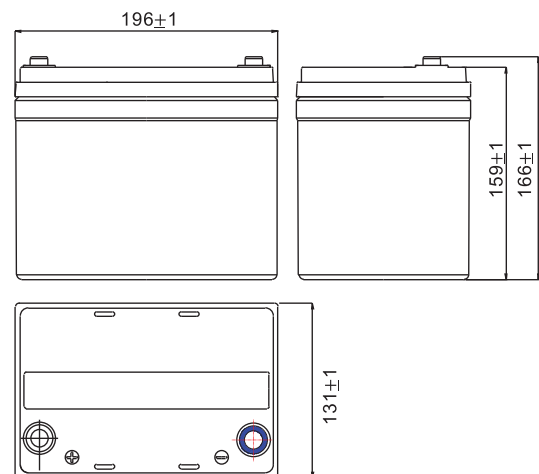
High Energy Density and Power Density.

Excellent Charge Acceptance Ability.

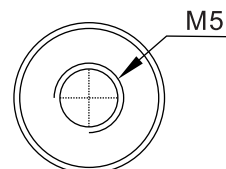
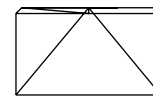
Strong High and Low Temperatature Performance.

Optimized Capability of Instant High-current Discharging

Outer Dimensions

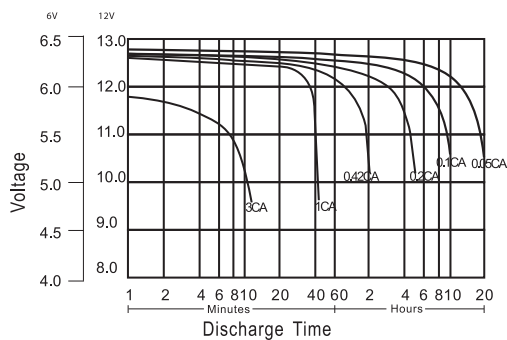


Terminal Type

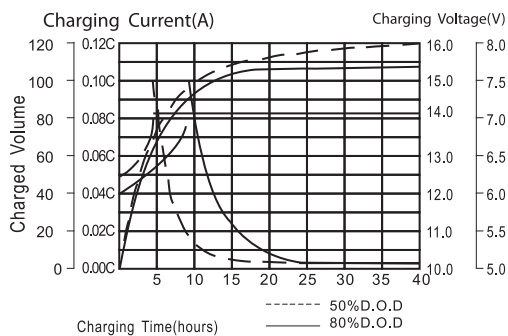


MODEL: SP38-12(38AH/20HR) Original SP27-12 (2HR)

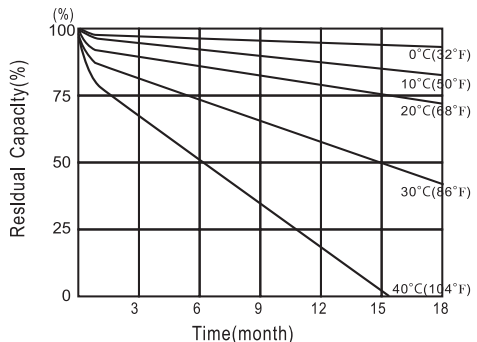
Discharge Characteristic Curves



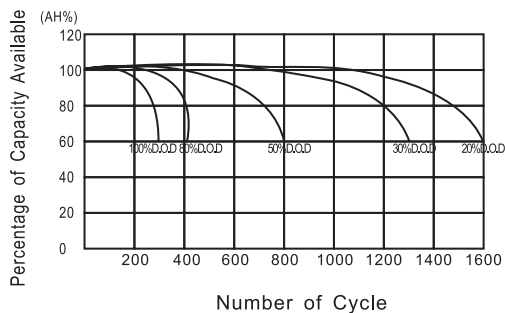
Constant Voltage Charging For Standby Use Batteries



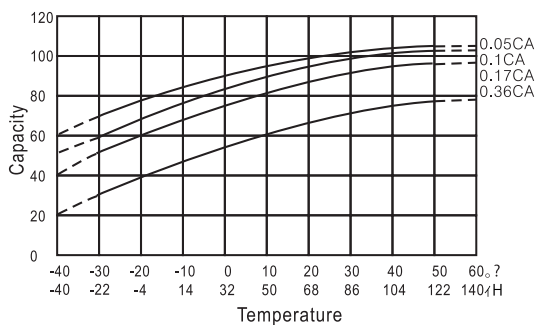
Self-Discharge Characteristics



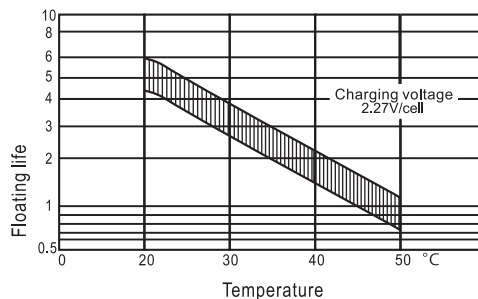
Cycle Service Life



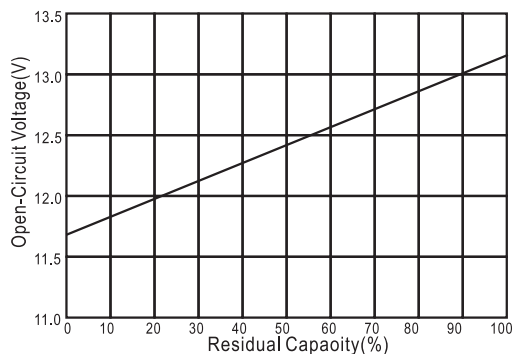
Effect of Temperature on Capacity



Float Service Life



Open-Circuit Voltage and Residual Capacity



Charge Curves

