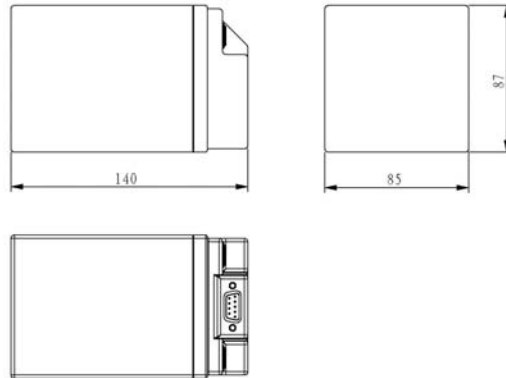
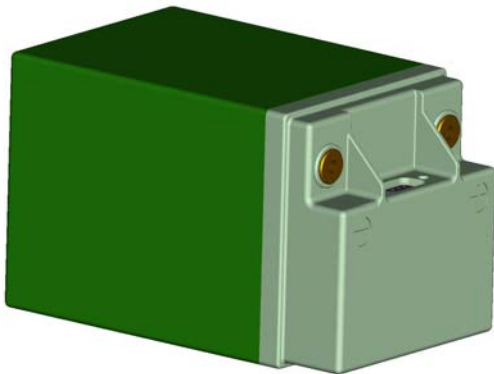


R1210B



Brief introduction

R1210B is based on BYD Fe battery. It has excellent safety, high energy density, long service time, nice temperature performance, low cost and no pollution.

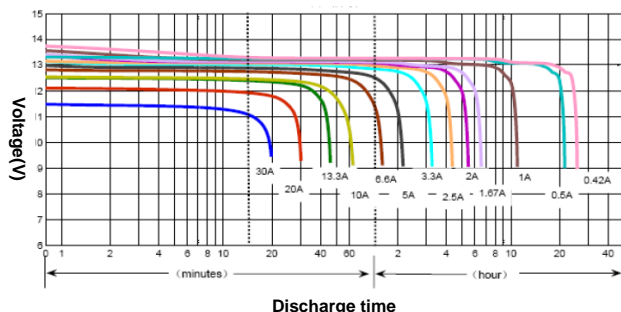
Mechanical

- ◆ Cumber burning PC+ABS cover.
- ◆ 3 terminals in the surface: M5 P+ terminal, M5 P- terminal, DB9 maintenance.

Inner circuit

- ◆ Cell Voltage detect.
- ◆ Could be connected to a BMS (Battery Management system) to monitor the battery.

Voltage-discharge time at different discharge current



| R1210B | |
|-----------------------------------|--|
| Basic characteristics | |
| Nominal Voltage[C/5] | 12 V |
| Initial capacity [C/5] | 10 Ah |
| Mechanical characteristics | |
| Length | 140 mm |
| Width | 85 mm |
| Height | 87 mm |
| Weight | 1.4 ±0.2kg |
| Electrical characteristics | |
| Charge voltage range [V] | 14.6±0.1V |
| Charging manner | CC / CV (constant current / constant voltage) |
| Charging current | 2A*7hrs (standard) |
| Discharging cut-off voltage | 10 V |
| Max. discharge current | 30 A (continuous) |
| Operating conditions | |
| Storage relative humidity | 5% ~ 95% |
| Storage temperature | -40 ~ +60°C |
| Operating temperature | Charge: +10~+50°C |
| | discharge: -20~+60°C |
| Storage temperature & duration | Less than 1 month: -20 ~ +60°C |
| | Less than 3 months: -20 ~ +45°C |
| | Less than 1 year: -20 ~ +25°C |
| Safety certification | Cell: UL Battery: UL\CE\UN3.83 |
| Maintenance | The maximum recharge period of the battery in storage is 12 months under room temperature. |

BYD Net Power System

Address: No.1 Baoping Road, Baolong Industrial Town, Longgang Shenzhen, 518116, China

Tel: +86-755-8988 8888-52318

Fax: +86-755-8483 5502

E-mail: netpower@byd.com

[Http://www.bydit.com](http://www.bydit.com)