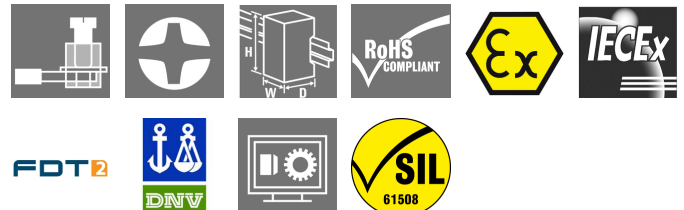


ACT20X ACT20X-SDI-HDO-H-S

Weidmüller Interface GmbH & Co. KG
Klingenbergstraße 16
D-32758 Detmold
Germany
Fon: +49 5231 14-0
Fax: +49 5231 14-292083
www.weidmueller.com

Product image, Similar to illustration



The ACT20X-SDI-HDO/2SDI-2HDO valve control modules are controlled from the safe zone on the input side by the switching signals (NPN, PNP) and provide digital outputs to switch actuators (solenoids, alarms) in Ex zone 0. Depending on the module, the output current is limited for the ignition protection groups IIC/IIB to 35 mA or 60 mA (only one channel). Integrated alarm contacts issue an alert in the event of a malfunction; this makes troubleshooting easier and increases system availability. The rail mounted disconnect-switch amplifiers are optionally available in one- or two-channel versions. With 11 mm width per channel, the devices need little space in the electrical cabinet.

General ordering data

Type	ACT20X-SDI-HDO-H-S
Order No.	8965410000
Version	EX signal isolating converter, Safe-input: relay, Ex-output: Opto module, 1-channel
GTIN (EAN)	4032248785025
Qty.	1 pc(s).

ACT20X
ACT20X-SDI-HDO-H-S

Weidmüller Interface GmbH & Co. KG
 Klingenbergstraße 16
 D-32758 Detmold
 Germany
 Fon: +49 5231 14-0
 Fax: +49 5231 14-292083
 www.weidmueller.com

Technical data
Dimensions and weights

Width	22.5 mm	Width (inches)	0.886 inch
Height	117.2 mm	Height (inches)	4.614 inch
Depth	113.6 mm	Depth (inches)	4.472 inch
Net weight	170 g		

Temperatures

Humidity	0...95 % (no condensation)	Operating temperature, max.	60 °C
Operating temperature, min.	-20 °C	Storage temperature, max.	85 °C
Storage temperature, min.	-20 °C	Operating temperature	-20 °C...60 °C
Storage temperature	-20 °C...85 °C		

Probability of failure

MTBF	175 Years	SFF	91 %
SIL in compliance with IEC 61508	2		

Environmental Product Compliance

REACH SVHC	Lead 7439-92-1
------------	----------------

Rated data UL

UL certificate	E337701.pdf
----------------	-------------

Input

Number of inputs	1	Type	NPN, PNP transistor, switching signal [input safe-side valve component]
Input voltage	≤ 28 V DC, Trigger level low: ≤ 2.0 V DC (NPN), ≤ 8.0 V DC (PNP), Trigger level high: ≥ 4.0 V DC (NPN), ≥ 10.0 V DC (PNP)	Input resistance, voltage	3.5 kΩ

Output

Type	intrinsically safe circuit, digital, output = input, direct or inverse (configurable)	Residual ripple (current loop)	< 40 mV _{eff}
Output current	max. 60 mA	Output values	depending on terminal assignment: 9 V @ 60 mA / 11.5 V @ 50 mA / 10 V @ 60 mA / 12.5 V @ 50 mA / 11 V @ 60 mA / 13.5 V @ 50 mA

ACT20X
ACT20X-SDI-HDO-H-S

Weidmüller Interface GmbH & Co. KG
Klingenbergstraße 16
D-32758 Detmold
Germany
Fon: +49 5231 14-0
Fax: +49 5231 14-292083
www.weidmueller.com

Technical data**Alarm output**

Alarm function	No supply voltage, Device error	Type	Relay, 1 NC (voltage-free)
Nominal switching voltage	≤ 125 V AC / 110 V DC (safe area) ≤ 32 V AC / 32 V DC (zone 2)	Continuous current	≤ 0.5 A AC / 0.3 A DC (safe zone), ≤ 0.5 A AC / 1 A DC (zone 2)
Power rating	≤ 62.5 VA / 32 W (safe area) ≤ 16 VA / 32 W (Zone 2)		

General specifications

Configuration	With FDT/DTM software	Voltage supply	19.2...31.2 V DC
Type of connection	Screw connection	Power consumption	≤ 2.5 W
Step response time	10 ms	Protection degree	IP20
Humidity	0...95 % (no condensation)		

Insulation coordination

EMC standards	DIN EN 61326, NE 21	Insulation voltage	2.6 kV (input / output)
Rated voltage	300 V		

Data for Ex applications (ATEX)

Voltage U_0	28 V DC	Current I_0	≤ 135 mA
Power P_0	≤ 0.77 W	Marking	II (1) G [Ex ia Ga] IIC/IIB / IIA, II (1) D [Ex ia Da] IIIC, I (M1) [Ex ia Ma] I

Safety-related basic specifications

Demand mode	High	Demand rate	1,000 s
Demand response time	< 10 ms (opto output)	Description of the "safe state"	de-energized (relay output)
Device type	B	Diagnostic test interval	10 s
Hardware fault tolerance (HFT)	0	Mean Time To Repair (MTTR)	24 h
Safe Failure Fraction (SFF)	91 %	T_{proof}	4 Years
Total failure rate for dangerous detected failures (λ_{DD})	61 FIT	Total failure rate for dangerous undetected failures (λ_{DU})	46 FIT
Total failure rate for safe detected failures (λ_{SD})	0 FIT	Total failure rate for safe undetected failures (λ_{SU})	480 FIT
Safety category	SIL 2	Probability of outage PFH	$4.6 \times 10^{-8} \text{ h}^{-1}$

Safety-related specifications Low demand mode

Average Probability of Failure on Demand (PFD _{avg})	2.92×10^{-4} ($T_{proof} = 1$ year), 4.84×10^{-4} ($T_{proof} = 2$ year), 1.06×10^{-4} ($T_{proof} = 5$ year)
--	---

ACT20X
ACT20X-SDI-HDO-H-S

Weidmüller Interface GmbH & Co. KG
 Klingenbergstraße 16
 D-32758 Detmold
 Germany
 Fon: +49 5231 14-0
 Fax: +49 5231 14-292083
 www.weidmueller.com

Technical data**Connection data**

Type of connection	Screw connection	Tightening torque, min.	0.4 Nm
Tightening torque, max.	0.6 Nm	Clamping range, rated connection	2.5 mm ²
Clamping range, min.	0.25 mm ²	Clamping range, max.	2.5 mm ²
Wire connection cross section AWG, min.	AWG 23	Wire connection cross section AWG, max.	AWG 14

Ratings IECEx/ATEX/cUL

ATEX certificate	10ATEX0019X.pdf	IEC Ex certificate	IECEx certification
Certificate No. (ATEX)	KEMA10ATEX0019X	Certificate No. (IECEX)	IECEXKEM09.0071X

Classifications

ETIM 3.0	EC002479	ETIM 4.0	EC002479
ETIM 5.0	EC002479	ETIM 6.0	EC002653
UNSPSC	30-21-18-01	eClass 5.1	27-21-01-07
eClass 6.2	27-21-01-07	eClass 7.1	27-21-01-07
eClass 8.1	27-21-01-07	eClass 9.0	27-21-01-20
eClass 9.1	27-21-01-90		

Product information

Product information	Weidmüller provides an extended guarantee period of 36 months for this device.
---------------------	--

Approvals

Approvals



Approvals	DNVGL;
ROHS	Conform

Downloads

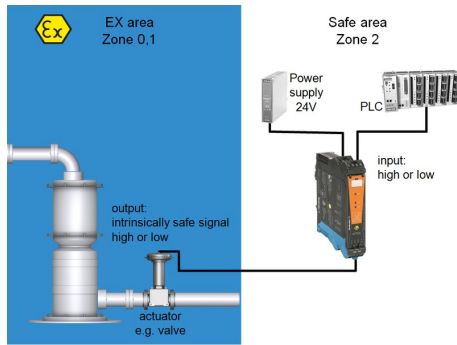
Approval/Certificate/Document of Conformity	SIL certificate Certification DNV GL Declaration of Conformity
Brochure/Catalogue	CAT 4.1 ELECTR 16/17 EN
Engineering Data	EPLAN, WSCAD
Engineering Data	STEP
Software	WI-Manager, DTM-Library for online installation V.1.2.0
User Documentation	Instruction sheet Manual MAN SAFETY ACT20X-SDI-HDO-H

Data sheet

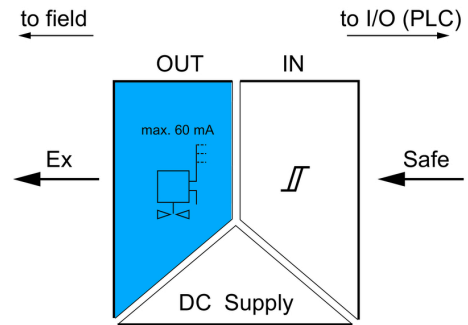
**ACT20X
ACT20X-SDI-HDO-H-S**

Weidmüller Interface GmbH & Co. KG
Klingenbergstraße 16
D-32758 Detmold
Germany
Fon: +49 5231 14-0
Fax: +49 5231 14-292083
www.weidmueller.com

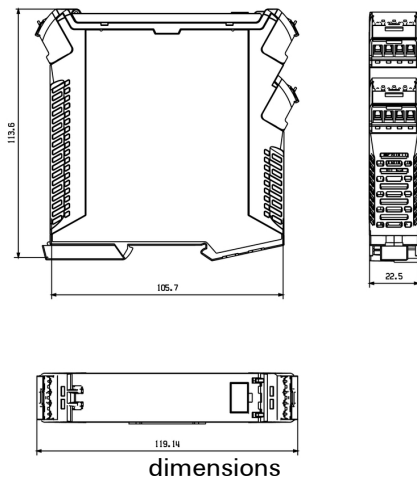
Drawings



application schematic



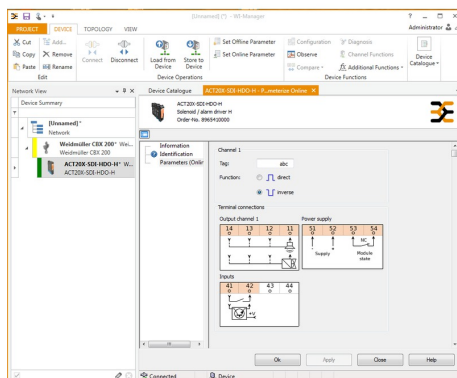
Dimensioned drawing



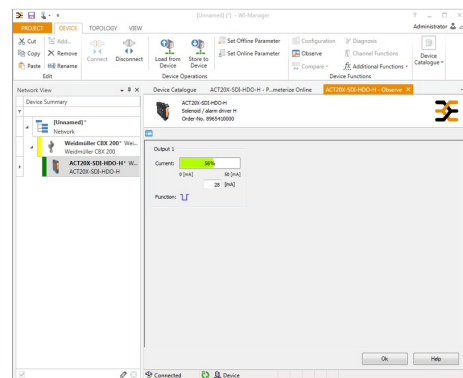
dimensions



screenshot configuration with FDT/DTM software example



screenshot of configuration with FDT2 / DTM software example



screenshot of "observe" with FDT2 / DTM software

ACT20X
ACT20X-SDI-HDO-H-S

Weidmüller Interface GmbH & Co. KG
Klingenbergstraße 16
D-32758 Detmold
Germany
Fon: +49 5231 14-0
Fax: +49 5231 14-292083
www.weidmueller.com

Drawings

