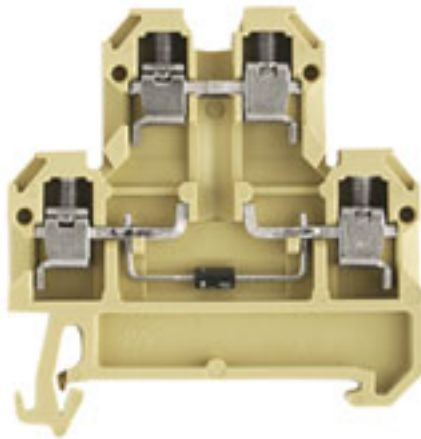


SAK Series
DK 4/35 LD 24VDC CSA A1**Weidmüller Interface GmbH & Co. KG**
Klingenbergstraße 16
D-32758 Detmold
Germany
Fon: +49 5231 14-0
Fax: +49 5231 14-292083
www.weidmueller.com**Product image**

Similar to illustration

Klippon® Connect with clamping yoke Technology

The high reliability and variety of designs of the terminal blocks with clamping yoke connections make planning easier and optimises operational safety. Klippon® Connect provides a proven response to a range of different requirements.

General ordering data

Type	DK 4/35 LD 24VDC CSA A1
Order No.	0539060000
Version	SAK Series, Double-tier terminal, Rated cross-section: 4 mm ² , Screw connection
GTIN (EAN)	4008190059521
Qty.	25 pc(s).

SAK Series
DK 4/35 LD 24VDC CSA A1

Weidmüller Interface GmbH & Co. KG
 Klingenbergstraße 16
 D-32758 Detmold
 Germany
 Fon: +49 5231 14-0
 Fax: +49 5231 14-292083
 www.weidmueller.com

Technical data**Dimensions and weights**

Width	6 mm	Width (inches)	0.236 inch
Height	50 mm	Height (inches)	1.969 inch
Depth	52.5 mm	Depth (inches)	2.067 inch
Net weight	12 g		

Temperatures

Storage temperature, max.	40 °C	Storage temperature, min.	10 °C
Storage temperature	10 °C...40 °C	Continuous operating temp., min.	-50 °C
Continuous operating temp., max.	100 °C		

Material data

Material	PA 66	Colour	beige / yellow
UL 94 flammability rating	V-2		

System specifications

Version	Screw connection, with LED, One end without connector	Tightening torque (clamping screw for copper conductors)	0.5...1 Nm
End cover plate required	Yes	Number of potentials	1
Number of levels	2	No. of clamping points per level	2
Number of potentials per tier	1	Levels cross-connected internally	Yes
PE connection	No	Rail	TS 35
N-function	No	PE function	No
PEN function	No		

Additional technical data

Number of similar terminals	1	Open sides	right
Type of mounting	Snap-on		

CSA rating data

Certificate No. (CSA)	12400-130	Current size C (CSA)	10 A
Voltage size C (CSA)	24 V	Wire cross section max. (CSA)	12 AWG
Wire cross section min. (CSA)	22 AWG		

SAK Series
DK 4/35 LD 24VDC CSA A1

Weidmüller Interface GmbH & Co. KG
 Klingenbergstraße 16
 D-32758 Detmold
 Germany
 Fon: +49 5231 14-0
 Fax: +49 5231 14-292083
 www.weidmueller.com

Technical data**Conductors for clamping (rated connection)**

Blade size	0.6 x 3.5 mm	Clamping range, max.	4 mm ²
Clamping range, min.	0.5 mm ²	Clamping screw	M 3
Connection cross-section, stranded, max.	4 mm ²	Connection cross-section, stranded, min.	0.5 mm ²
Connection direction	on side	Gauge to IEC 60947-1	A3
Number of connections	4	Stripping length	9 mm
Tightening torque, max.	1 Nm	Tightening torque, min.	0.5 Nm
Torque level with DMS electric screwdriver	2	Type of connection	Screw connection
Wire connection cross section AWG, max.	AWG 12	Wire connection cross section AWG, min.	AWG 22
Wire connection cross section, finely stranded, max.	4 mm ²	Wire connection cross-section, finely stranded with wire-end ferrules DIN 46228/1, max.	4 mm ²
Wire connection cross-section, finely stranded with wire-end ferrules DIN 46228/1, min.	0.5 mm ²	Wire connection cross-section, finely stranded, min.	0.5 mm ²
Wire connection cross-section, solid core, max.	4 mm ²	Wire connection cross-section, solid core, min.	0.5 mm ²

Dimensions

TS 32 offset	20 mm	TS 35 offset	27 mm
--------------	-------	--------------	-------

Display element

Current	5 mA	Indicator element	red
Operating voltage for display, max.	24 V	Operating voltage for display, min.	24 V
Type of voltage for indicator	DC		

Rating data

Rated cross-section	4 mm ²	Rated voltage	24 V
Current at maximum wires	10 A	Standards	IEC 60947-7-1
Volume resistance according to IEC 60947-7-x	1 mΩ	Rated impulse withstand voltage	1 kV
Pollution severity	3		

Classifications

ETIM 3.0	EC000898	ETIM 4.0	EC000898
ETIM 5.0	EC000898	ETIM 6.0	EC000897
UNSPSC	30-21-18-11	eClass 5.1	27-14-11-31
eClass 6.2	27-14-11-90	eClass 7.1	27-14-11-90
eClass 8.1	27-14-11-27	eClass 9.0	27-14-11-20
eClass 9.1	27-14-11-20		

Approvals

Approvals



ROHS Conform

Creation date May 28, 2019 1:54:57 AM CEST

Catalogue status 23.05.2019 / We reserve the right to make technical changes.

3

Data sheet

SAK Series
DK 4/35 LD 24VDC CSA A1

Weidmüller Interface GmbH & Co. KG
Klingenbergstraße 16
D-32758 Detmold
Germany
Fon: +49 5231 14-0
Fax: +49 5231 14-292083
www.weidmueller.com

Technical data

Safety note

Safety notice

[Safety Information](#)