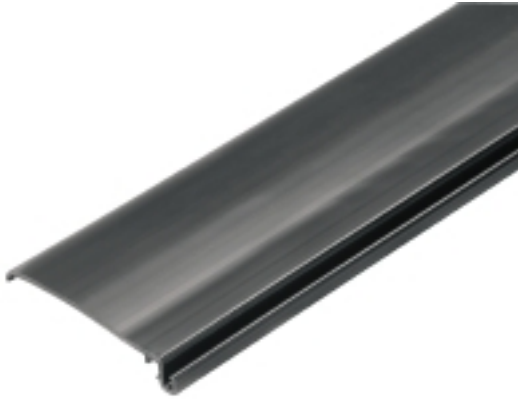


**OMNIMATE Housing - series CH20M  
CH20M BUS-ADP TS 35/500**

**Weidmüller Interface GmbH & Co. KG**  
 Klingenbergstraße 16  
 D-32758 Detmold  
 Germany  
 Fon: +49 5231 14-0  
 Fax: +49 5231 14-292083  
 www.weidmueller.com

**The integrated rail bus for the modular electronics housing system**

When supplying, connecting or distributing within modular applications, the rail bus can replace the tedious individual wiring process with a flexible and uninterrupted system-wide solution.

The system bus is securely integrated within the 35-mm standard mounting rail. The SMD-bus contact block can be reflow-soldered so that it can be completely automatically processed during the component assembly. The resistant, gold-plated contact surfaces ensure a permanent and reliable contact for all housing widths.

- **Unlimited scalability** The integrated connection solution covers all system widths: from the 6-mm slice to the 67-mm large-area housing.
- **Easy to service during installation** It's easy to replace a module, even in existing modules groups – without any influence on the neighbouring modules.
- **Universal integration** The uninterrupted system bus is securely integrated within the 35-mm standard mounting rail.
- **Maximum availability** Five fully-galvanized and partially gold-plated twin-arched contacts are used to establish a permanent contact to the rail bus. THR solder flanges ensure that the connection to the circuit board is stable.

**General ordering data**

Type	CH20M BUS-ADP TS 35/500
Order No.	<a href="#">1248260000</a>
Version	Electronics housings, OMNIMATE Housing - series CH20M , Cover profile, Width: 39.5 mm
GTIN (EAN)	4050118052992
Qty.	10 pc(s).

**OMNIMATE Housing - series CH20M  
CH20M BUS-ADP TS 35/500**

**Weidmüller Interface GmbH & Co. KG**  
Klingenbergstraße 16  
D-32758 Detmold  
Germany  
Fon: +49 5231 14-0  
Fax: +49 5231 14-292083  
www.weidmueller.com

**Technische Daten****Dimensions and weights**

Length	500 mm	Width	39.5 mm
Height	7 mm	Net weight	50 g

**System characteristics**

Version	Cover profile
---------	---------------

**Material data**

UL 94 flammability rating	V-0	Insulating material	Polyamide
---------------------------	-----	---------------------	-----------

**Classifications**

eClass 6.2	27-18-08-02	eClass 7.1	27-18-27-02
------------	-------------	------------	-------------