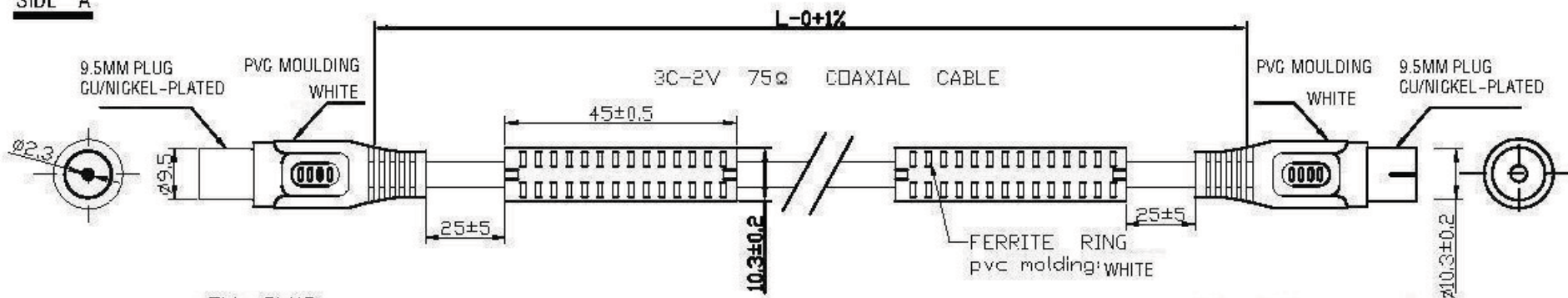
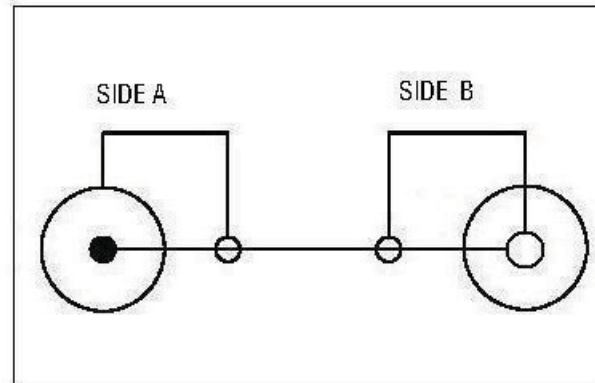
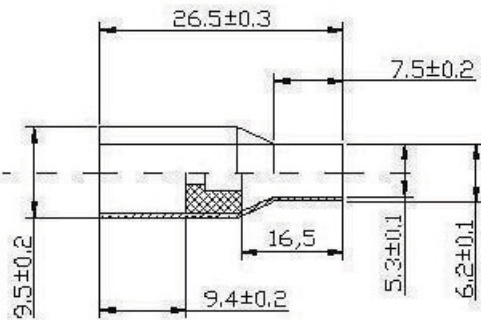


**SIDE A**

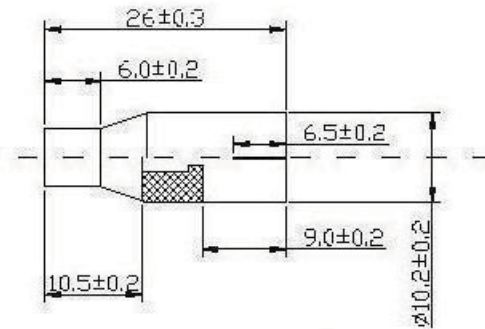
**SIEDE B**



TV PLUG  
( 1 : 1.5 )



TV JACK  
( 1 : 1.5 )



cable specification:

1	wire spe.	conductor	1*0.5 ± 0.05mm CU
		insulation	2.8±0.1mm solid PE aluminium foil 0.06mm
		braid	128*0.12mm cca
		pvc	white color
		od,mm	5.0±0.2mm
2	connector	side A	9.5± 0.2mm cooper/ NICKEL-PLATED
		side B	10.2±0.2mm cooper/ NICKEL-PLATED
3	ferrite	two / white pvc mould	
		45± 0.5mm / 10.3±0.2mm	
4	mold	as drawing / white pvc mould	
SHIELDING >95 DB			

note:

**WIRE PRINTING:**  
75Ω COAXIAL CABLE DOUBLE SHIELDED  
PRNIT COLOR:FOR THE LOGO AND TEXT IS GRAY

GENERAL TOLERANCES  
(UNLESS SPECIFIED)

LENGTH: X ± 2  
X ± 0.2  
XX ± 0.10  
ANGLE: X° ± 0.1°  
X° ± 0° 30'

UNIT :mm			REV :00	MOLD NO :	9.5 TV SERIES PLUG TO JACK		
DWG	HXJ	S.P.NO.		ITEM NO	50281	1.5M	
GHECK	WOY	P.O.NO.			50282	2.5M	
DSN	SMY	SIZE			50283	5.0M	
					50284	7.5M	
					50285	10M	