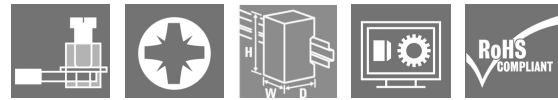


RIDERSERIES RCI RCIKIT 24VDC 1CO LD/PB

Weidmüller Interface GmbH & Co. KG
 Klingenbergstraße 16
 D-32758 Detmold
 Germany
 Fon: +49 5231 14-0
 Fax: +49 5231 14-292083
 www.weidmueller.com

Product image



Modular system comprised of:

- relay socket for rail mounting
- LED indicator unit
- retaining clip
- plug-in relay
- markers

General ordering data

| | |
|------------|---|
| Type | RCIKIT 24VDC 1CO LD/PB |
| Order No. | 8881580000 |
| Version | RIDERSERIES RCI, Relays, No. of contacts: 1 CO contact with test button AgNi 90/10, Rated control voltage: 24 V DC, Continuous current: 16 A ⁽¹⁾ , Screw connection |
| GTIN (EAN) | 4032248631834 |
| Qty. | 10 pc(s). |

**RIDERSERIES RCI
RCIKIT 24VDC 1CO LD/PB**

Weidmüller Interface GmbH & Co. KG
Klingenbergstraße 16
D-32758 Detmold
Germany
Fon: +49 5231 14-0
Fax: +49 5231 14-292083
www.weidmueller.com

Technical data
Dimensions and weights

| | | | |
|------------|---------|-----------------|------------|
| Width | 15.8 mm | Width (inches) | 0.622 inch |
| Height | 77 mm | Height (inches) | 3.031 inch |
| Depth | 70.2 mm | Depth (inches) | 2.764 inch |
| Net weight | 56.2 g | | |

Temperatures

| | | | |
|-----------------------------|--|-----------------------------|----------------|
| Humidity | 40 °C / 93 % rel. humidity, no condensation | Operating temperature, max. | 70 °C |
| Operating temperature, min. | -40 °C | Storage temperature, max. | 70 °C |
| Storage temperature, min. | -40 °C | Operating temperature | -40 °C...70 °C |
| Storage temperature | -40 °C...70 °C | | |

Environmental Product Compliance

| | |
|------------|----------------|
| REACH SVHC | Lead 7439-92-1 |
|------------|----------------|

Input

| | | | |
|-----------------------|---------------------|--------------------------------|-------------------|
| Rated control voltage | 24 V DC | Rated current DC | 16.7 mA |
| Power rating | 420 mW | Pull-in/drop-out voltage, typ. | 16.8 V / 2.4 V DC |
| Coil resistance | 1440 Ω ± 10 % | Status indicator | Green LED |
| Protective circuit | Free-wheeling diode | | |

Output

| | | | |
|-------------------------|--|--|------------|
| Rated switching voltage | 250 V AC | Max. switching voltage, AC | 400 V |
| Continuous current | 16 A ⁽¹⁾ | Inrush current | 30 A / 4 s |
| Switch-on delay | ≤ 8 ms | Switch-off delay | ≤ 6 ms |
| Min. switching power | 1 mA @ 24 V, 10 mA @ 12 V, 100 mA @ 5 V | Max. switching frequency at rated load | 0.1 Hz |

Contact data

| | | | |
|--------------|---|-------------------------|---|
| Contact type | 1 CO contact with test button (AgNi 90/10) | Mechanical service life | AC coil 5 x 10 ⁶ switching cycles, DC coil 10 x 10 ⁶ switching cycles |
|--------------|---|-------------------------|---|

General data

| | | | |
|--------------------------------------|-------|-------------|---|
| Rail | TS 35 | Test button | yes (lockable, just when removing the detent lock) |
| Mechanical switch position indicator | Yes | Colour | black |

Insulation coordination

| | | | |
|---|------------------|-------------------------------------|-----------------------------|
| Rated voltage | 250 V | Surge voltage category | III |
| Pollution severity | 2 | Insulating material group | IIIa |
| Protection degree | IP20 | Dielectric strength, Input/Output | 5 kV _{eff} / 1 min |
| Creepage and clearance distance input - output | ≥ 8 mm | Dielectric strength of open contact | 1 kV _{eff} / 1 min |
| Impulse withstand voltage | 5 kV (1.2/50 μs) | | |

RIDERSERIES RCI
RCIKIT 24VDC 1CO LD/PB

Weidmüller Interface GmbH & Co. KG
 Klingenbergstraße 16
 D-32758 Detmold
 Germany
 Fon: +49 5231 14-0
 Fax: +49 5231 14-292083
 www.weidmueller.com

Technical data
Further details of approvals / standards

| | | | |
|-------------------------------|----------------|------------------------------|----------------|
| Standards | DIN EN 50178 | Certificate no. (CSA) relay | 249409-2426937 |
| Certificate no. (CSA) base | 249409-2295474 | Certificate No. (DNVGL) | TAA000011A |
| Certificate no. (cURus) relay | E224238 | Certificate no. (cURus) base | E223759 |

Connection data

| | | | |
|---|---------------------|---|-------------------|
| Wire connection method | Screw connection | Stripping length, rated connection | 8 mm |
| Tightening torque, min. | 0.5 Nm | Tightening torque, max. | 0.7 Nm |
| Clamping range, rated connection | 2.5 mm ² | Clamping range, min. | 1 mm ² |
| Clamping range, max. | 2.5 mm ² | Wire cross-section, solid, min. | 1 mm ² |
| Wire cross-section, solid, max. | 2.5 mm ² | Wire connection cross-section, finely stranded, min. | 1 mm ² |
| Wire connection cross section, finely stranded, max. | 2.5 mm ² | Wire connection cross-section, finely stranded with wire-end ferrules DIN 46228/4, min. | 1 mm ² |
| Wire connection cross-section, finely stranded with wire-end ferrules DIN 46228/4, max. | 2.5 mm ² | Conductor cross-section, flexible, AEH (DIN 46228-1), min. | 1 mm ² |
| Conductor cross-section, flexible, AEH (DIN 46228-1), max. | 2.5 mm ² | Wire connection cross section, finely stranded, two clampable wires, min. | 1 mm ² |
| Wire cross-section, finely stranded, two clampable wires, max. | 1.5 mm ² | Blade size | size PZ1 |

Classifications

| | | | |
|------------|-------------|------------|-------------|
| ETIM 3.0 | EC001437 | ETIM 4.0 | EC001437 |
| ETIM 5.0 | EC001437 | ETIM 6.0 | EC001437 |
| UNSPSC | 30-21-19-17 | eClass 5.1 | 27-37-16-01 |
| eClass 6.2 | 27-37-16-01 | eClass 7.1 | 27-37-16-01 |
| eClass 8.1 | 27-37-16-01 | eClass 9.0 | 27-37-16-01 |
| eClass 9.1 | 27-37-16-01 | | |

Product information

| | |
|---------------------|--|
| Product information | 1) For full continuous current (16 A), relay connections 11-21, 12-22 and 14-24 must be bridged. IP20 without connected conductor at complete opened clamping yoke connection. |
|---------------------|--|

Approvals

Approvals



ROHS Conform

Downloads

| | |
|---|--|
| Approval/Certificate/Document of Conformity | DE_PA5600_160414_001.pdf |
| Brochure/Catalogue | CAT 4.2 ELECTR 18/19 EN |
| Engineering Data | EPLAN, WSCAD, Zuken E3.S |
| Engineering Data | STEP |

Creation date May 28, 2019 2:50:31 PM CEST

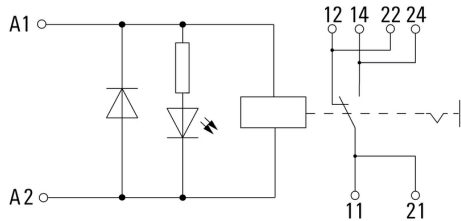
Catalogue status 23.05.2019 / We reserve the right to make technical changes.

**RIDERSERIES RCI
RCIKIT 24VDC 1CO LD/PB**

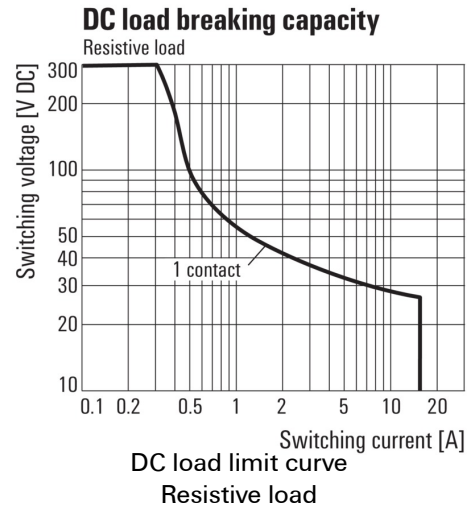
Weidmüller Interface GmbH & Co. KG
 Klingenbergstraße 16
 D-32758 Detmold
 Germany
 Fon: +49 5231 14-0
 Fax: +49 5231 14-292083
 www.weidmueller.com

Drawings

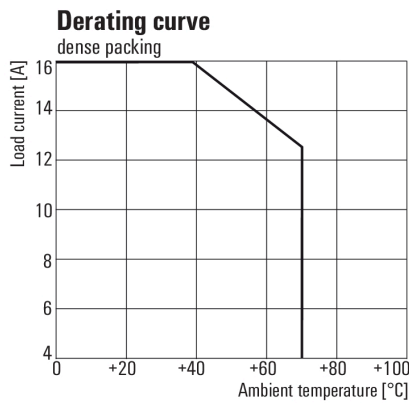
Wiring diagram



Graph



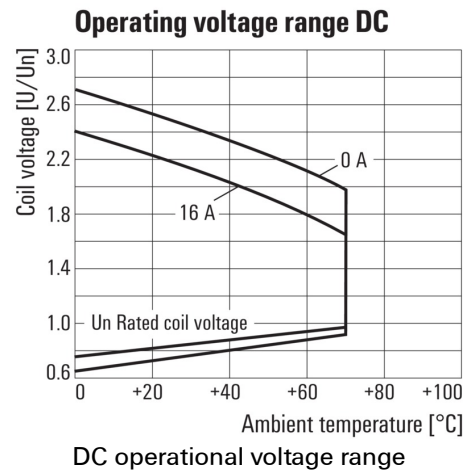
Graph



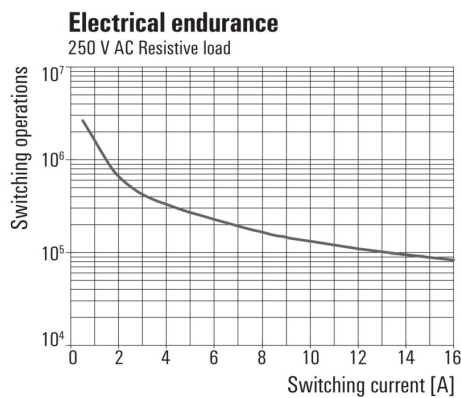
For full continuous current (16 A), socket connections 11-21, 12-22 and 14-24 must be bridged.

Derating curve
Relay in combination with base

Graph

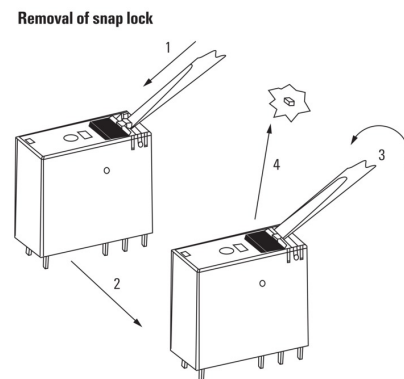


Graph



Electrical service life 250 V AC resistive load
250 V AC resistive load

Dimensional drawing



Detailed drawing
Removal of the test button detent lock

Data sheet**RIDERSERIES RCI
RCIKIT 24VDC 1CO LD/PB**

Weidmüller Interface GmbH & Co. KG
Klingenbergstraße 16
D-32758 Detmold
Germany
Fon: +49 5231 14-0
Fax: +49 5231 14-292083
www.weidmueller.com

Drawings**Dimensional drawing**