

## RIDERSERIES RCI RCIKIT 24VAC 1CO LD/PB

**Weidmüller Interface GmbH & Co. KG**  
Klingenbergstraße 16  
D-32758 Detmold  
Germany  
Fon: +49 5231 14-0  
Fax: +49 5231 14-292083  
www.weidmueller.com

### Product image



Similar to illustration

Modular system comprised of:

- relay socket for rail mounting
- LED indicator unit
- retaining clip
- plug-in relay
- markers

### General ordering data

|            |   |
|------------|---|
| Type       | RCIKIT 24VAC 1CO LD/PB  |
| Order No.  | <a href="#">8881590000</a>  |
| Version    | RIDERSERIES RCI, Relays, No. of contacts: 1<br>CO contact with test button AgNi 90/10, Rated<br>control voltage: 24 V AC, Continuous current: 16<br>A <sup>(1)</sup> , Screw connection |
| GTIN (EAN) | 4032248631841   |
| Qty.       | 10 pc(s).   |

**RIDERSERIES RCI  
RCIKIT 24VAC 1CO LD/PB**

**Weidmüller Interface GmbH & Co. KG**  
Klingenbergstraße 16  
D-32758 Detmold  
Germany  
Fon: +49 5231 14-0  
Fax: +49 5231 14-292083  
www.weidmueller.com

**Technical data**
**Dimensions and weights**

|            |         |                 |            |
|------------|---------|-----------------|------------|
| Width      | 15.8 mm | Width (inches)  | 0.622 inch |
| Height     | 77 mm   | Height (inches) | 3.031 inch |
| Depth      | 70.2 mm | Depth (inches)  | 2.764 inch |
| Net weight | 64.3 g  |                 |            |

**Temperatures**

|                             |  |                             |                |
|-----------------------------|--|-----------------------------|----------------|
| Humidity                    | 40 °C / 93 % rel. humidity,<br>no condensation | Operating temperature, max. | 70 °C          |
| Operating temperature, min. | -40 °C   | Storage temperature, max.   | 70 °C          |
| Storage temperature, min.   | -40 °C   | Operating temperature       | -40 °C...70 °C |
| Storage temperature         | -40 °C...70 °C                                 |                             |                |

**Environmental Product Compliance**

|            |                |
|------------|----------------|
| REACH SVHC | Lead 7439-92-1 |
|------------|----------------|

**Input**

|                       |              |                                |                 |
|-----------------------|--------------|--------------------------------|-----------------|
| Rated control voltage | 24 V AC      | Rated current AC               | 31.6 mA         |
| Power rating          | 0.75 VA      | Pull-in/drop-out voltage, typ. | 18 V / 3.6 V AC |
| Coil resistance       | 350 Ω ± 10 % | Status indicator               | red LED         |

**Output**

|                         |  |  |            |
|-------------------------|--|--|------------|
| Rated switching voltage | 250 V AC                                   | Max. switching voltage, AC             | 400 V      |
| Continuous current      | 16 A <sup>(1)</sup>                        | Inrush current                         | 30 A / 4 s |
| Switch-on delay         | ≤ 8 ms                                     | Switch-off delay                       | ≤ 6 ms     |
| Min. switching power    | 1 mA @ 24 V, 10 mA @ 12 V,<br>100 mA @ 5 V | Max. switching frequency at rated load | 0.1 Hz     |

**Contact data**

|              |   |                         |   |
|--------------|---|-------------------------|---|
| Contact type | 1 CO contact with test<br>button (AgNi 90/10) | Mechanical service life | AC coil 5 x 10 <sup>6</sup> switching<br>cycles, DC coil 10 x 10 <sup>6</sup><br>switching cycles |
|--------------|---|-------------------------|---|

**General data**

|                                      |       |             |   |
|--------------------------------------|-------|-------------|---|
| Rail                                 | TS 35 | Test button | yes (lockable, just when<br>removing the detent lock) |
| Mechanical switch position indicator | Yes   | Colour      | black   |

**Insulation coordination**

|   |                  |                                     |                             |
|---|------------------|-------------------------------------|-----------------------------|
| Rated voltage                                     | 250 V            | Surge voltage category              | III                         |
| Pollution severity                                | 2                | Insulating material group           | IIIa                        |
| Protection degree                                 | IP20             | Dielectric strength, Input/Output   | 5 kV <sub>eff</sub> / 1 min |
| Creepage and clearance distance input –<br>output | ≥ 8 mm           | Dielectric strength of open contact | 1 kV <sub>eff</sub> / 1 min |
| Impulse withstand voltage                         | 5 kV (1.2/50 μs) |                                     |                             |

**RIDERSERIES RCI**  
**RCIKIT 24VAC 1CO LD/PB**

**Weidmüller Interface GmbH & Co. KG**  
 Klingenbergstraße 16  
 D-32758 Detmold  
 Germany  
 Fon: +49 5231 14-0  
 Fax: +49 5231 14-292083  
 www.weidmueller.com

**Technical data**
**Further details of approvals / standards**

|                               |                |                              |                |
|-------------------------------|----------------|------------------------------|----------------|
| Standards                     | DIN EN 50178   | Certificate no. (CSA) relay  | 249409-2426937 |
| Certificate no. (CSA) base    | 249409-2295474 | Certificate No. (DNVGL)      | TAA000011A     |
| Certificate no. (cURus) relay | E224238        | Certificate no. (cURus) base | E223759        |

**Connection data**

|   |                     |   |                   |
|---|---------------------|---|-------------------|
| Wire connection method  | Screw connection    | Stripping length, rated connection  | 8 mm              |
| Tightening torque, min.   | 0.5 Nm              | Tightening torque, max.   | 0.7 Nm            |
| Clamping range, rated connection  | 2.5 mm <sup>2</sup> | Clamping range, min.  | 1 mm <sup>2</sup> |
| Clamping range, max.  | 2.5 mm <sup>2</sup> | Wire cross-section, solid, min.   | 1 mm <sup>2</sup> |
| Wire cross-section, solid, max.   | 2.5 mm <sup>2</sup> | Wire connection cross-section, finely stranded, min.                                    | 1 mm <sup>2</sup> |
| Wire connection cross section, finely stranded, max.                                    | 2.5 mm <sup>2</sup> | Wire connection cross-section, finely stranded with wire-end ferrules DIN 46228/4, min. | 1 mm <sup>2</sup> |
| Wire connection cross-section, finely stranded with wire-end ferrules DIN 46228/4, max. | 2.5 mm <sup>2</sup> | Conductor cross-section, flexible, AEH (DIN 46228-1), min.                              | 1 mm <sup>2</sup> |
| Conductor cross-section, flexible, AEH (DIN 46228-1), max.                              | 2.5 mm <sup>2</sup> | Wire connection cross section, finely stranded, two clampable wires, min.               | 1 mm <sup>2</sup> |
| Wire cross-section, finely stranded, two clampable wires, max.                          | 1.5 mm <sup>2</sup> | Blade size  | size PZ1          |

**Classifications**

|            |             |            |             |
|------------|-------------|------------|-------------|
| ETIM 3.0   | EC001437    | ETIM 4.0   | EC001437    |
| ETIM 5.0   | EC001437    | ETIM 6.0   | EC001437    |
| UNSPSC     | 30-21-19-17 | eClass 5.1 | 27-37-16-01 |
| eClass 6.2 | 27-37-16-01 | eClass 7.1 | 27-37-16-01 |
| eClass 8.1 | 27-37-16-01 | eClass 9.0 | 27-37-16-01 |
| eClass 9.1 | 27-37-16-01 |            |             |

**Product information**

|                     |  |
|---------------------|--|
| Product information | 1) For full continuous current (16 A), relay connections 11-21, 12-22 and 14-24 must be bridged. IP20 without connected conductor at complete opened clamping yoke connection. |
|---------------------|--|

**Approvals**

Approvals



ROHS Conform

**Downloads**

|   |  |
|---|--|
| Approval/Certificate/Document of Conformity | <a href="#">DE_PA5600_160414_001.pdf</a> |
| Brochure/Catalogue                          | <a href="#">CAT 4.2 ELECTR 18/19 EN</a>  |
| Engineering Data                            | <a href="#">EPLAN, WSCAD, Zuken E3.S</a> |
| Engineering Data                            | <a href="#">STEP</a>                     |

Creation date May 28, 2019 2:50:34 PM CEST

Catalogue status 23.05.2019 / We reserve the right to make technical changes.

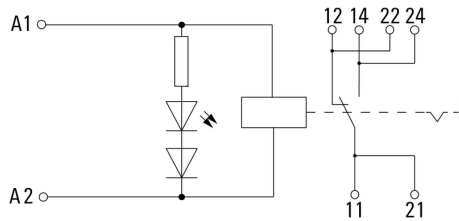
3

**RIDERSERIES RCI  
RCIKIT 24VAC 1CO LD/PB**

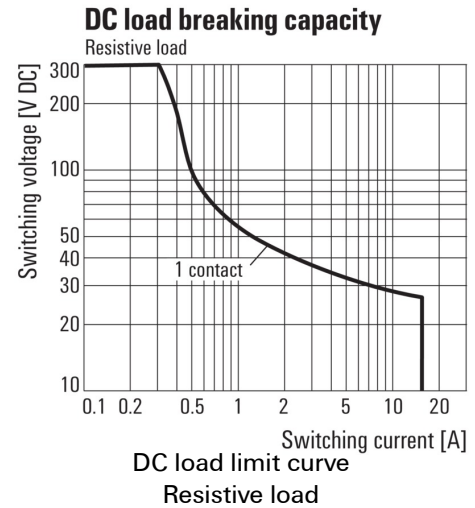
**Weidmüller Interface GmbH & Co. KG**  
 Klingenbergstraße 16  
 D-32758 Detmold  
 Germany  
 Fon: +49 5231 14-0  
 Fax: +49 5231 14-292083  
 www.weidmueller.com

**Drawings**

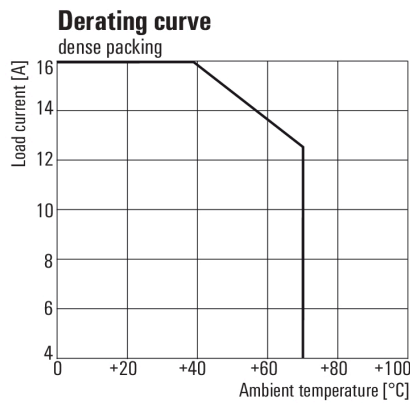
**Wiring diagram**



**Graph**



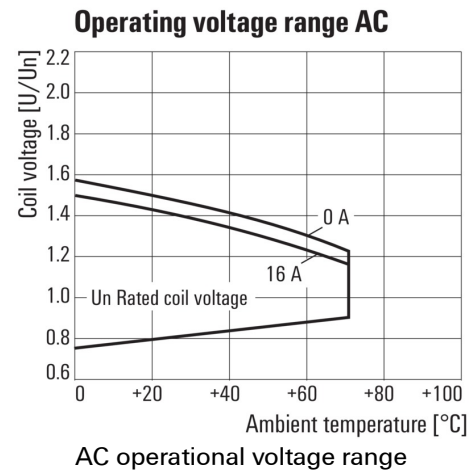
**Graph**



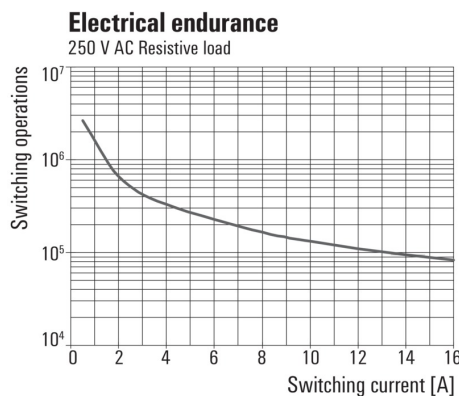
For full continuous current (16 A), socket connections 11-21, 12-22 and 14-24 must be bridged.

**Derating curve**  
Relay in combination with base

**Graph**

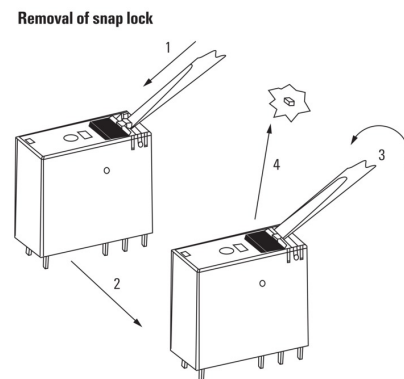


**Graph**



Electrical service life 250 V AC resistive load  
250 V AC resistive load

**Dimensional drawing**



**Detailed drawing**  
Removal of the test button detent lock

**Data sheet**

**RIDERSERIES RCI  
RCIKIT 24VAC 1CO LD/PB**

**Weidmüller Interface GmbH & Co. KG**  
Klingenbergstraße 16  
D-32758 Detmold  
Germany  
Fon: +49 5231 14-0  
Fax: +49 5231 14-292083  
[www.weidmueller.com](http://www.weidmueller.com)

**Drawings**

**Dimensional drawing**

