



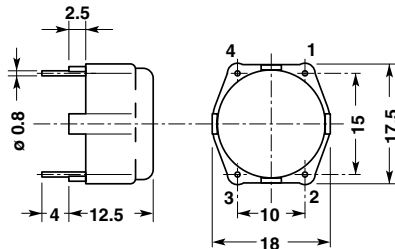
# Current-compensated Noise Suppression Chokes

TYPES  
**42H17**  
**42V20**

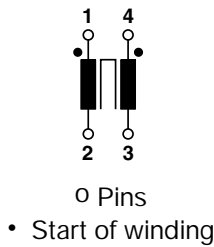
**Voltage 250 Vac**  
**Current 0.4 to 3.6 A**

## CASE VERSION

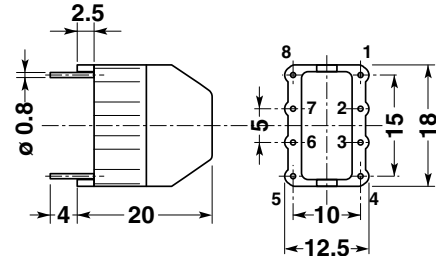
These chokes are fitted with high-permeability toroid core (ferrite). They are mainly used in devices equipped with switched-mode power supplies, and in filters designed to prevent both the spread of parasitic noise within the device, and the effects of line noise on the device itself.



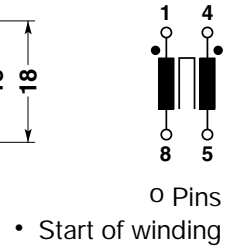
**42H17**  
Horizontal mounting



Dimensions in mm  
Pins are tinned



**42V20**  
Vertical mounting



Optional pins: 2-7/3-6

## TYPES

Horizontal	Vertical	Rated current per winding A	Rated inductance per winding mH	DC resistance per winding (typical) mΩ
Code	Code			
42H17 04 00	42V20 04 00	0.4	39	2600
42H17 04 01	42V20 04 01	0.4	27	1000
42H17 05 00	42V20 05 00	0.5	18	940
42H17 07 00	42V20 07 00	0.7	10	360
42H17 10 00	42V20 10 00	1	6.8	400
42H17 12 00	42V20 12 00	1.2	6.8	330
42H17 15 00	42V20 15 00	1.5	3.3	100
42H17 20 02	42V20 20 02	2	1	40
42H17 26 00	42V20 26 00	2.6	0.4	60
42H17 30 00	42V20 30 00	3	1	50
42H17 36 00	42V20 36 00	3.6	0.4	15

## Technical Data

Rated current: referred to 250 V-50 Hz and +60°C ambient temperature.  
 Inductance tolerance: +50 -30%  
 Climatic category: DIN GKC (-40 to +125°C; humidity cat. C)  
 Overtemperature of windings: < 55°C  
 Approx. weight: 10 g

Approval: VDE

More technical data see p. 14

The chokes are designed and tested in accordance with EN 138100; EN 60938-1  
 The cases are of flame-retardant plastic material in accordance with UL 94V-0