

LADY SHAVER WASHABLE

LS 7140



DE EN ES FR IT SV

NO NL PL PT TR EL

FOR A GOOD REASON

GRUNDIG





SAFETY

Please note the following instructions when using the appliance:

- This appliance is designed for domestic use only.
- This appliance is designed solely for shaving human body hair. Any other use is expressly prohibited.
- When the appliance is being charged, on no account should it come into contact with water or any other liquid.



- Never use the appliance if it, the blade foil or the shaving head are visibly damaged.
 - Only use the SW-030100EUL power supply unit provided.
 - Caution! Always keep the power adapter dry.
 - The appliance may only come into contact with water once it is disconnected from the power supply unit and the power supply unit is no longer in the socket.
 - Do not drop the appliance.
- This appliance can be used by children aged from 8 years and above and persons with reduced physical, sensory or mental capabilities or lack of experience and knowledge if they have been given supervision or instruction concerning use of the appliance in a safe way and understand the hazards involved. Children shall not play with the appliance. Cleaning and user maintenance shall not be made by children without supervision.
 - Do not open the appliance under any circumstances. No warranty claims are accepted for damage caused by improper handling.

OVERVIEW

Dear customer,

Congratulations on the purchase of your new GRUNDIG Lady Shaver LS 7140.

Please read the following user notes carefully to ensure you can enjoy your quality GRUNDIG product for many years to come.

Special features

- Anti-bacterial titanium foil with two longhair side trimmers for effective protection against skin irritations
- The lady shaver is designed to remove unwanted hair on arms, legs and also in especially sensitive areas such as the bikini line, armpits or the face
- The lady shaver can be used on wet skin
- The cutting system can be cleaned in water when removed.
- Attachment comb for 5 mm trimming length

A responsible approach!



GRUNDIG focusses on contractually agreed social working conditions with fair wages for both internal employees and

suppliers, as well as on the efficient use of raw materials with continual waste reduction of several tonnes of plastic each year – and availability of at least 5 years for all accessories.

For a future worth living.

For a good reason. Grundig.

Controls

See the illustrations on page 3.

- A** Cutting system (shaving foil with two side trimmers)
- B** Shaving head
- C** Release buttons
- D** Switch for turning on and off
- E** Charging indicator light
- F** Power cord socket
- G** Protective cap

Accessories

- H** Hanging holder
- I** Trimming comb (5 mm)
- J** Power supply unit
- K** Cleaning brush

OPERATION

Note

- The appliance can be used on wet skin in battery mode and cleaned under the tap.



Rechargeable battery operation

When operating the appliance with the built-in nickel metal hydride battery, only use the power supply unit **J** supplied for charging.

Check if the type plate on the power supply unit **J** corresponds to your local mains supply.

- 1 Press the switch **D**, then push the switch **D** downwards to turn off the appliance.
- 2 Plug the power supply unit **J** into the wall socket first and then the power cord into the power cord socket **F**.
 - During the charging process, the charging indicator light **E** lights up blue.
 - Once the appliance is fully charged, the charging indicator light **E** disappears.

Notes

- Charge up the batteries completely (for at least 12 hours) before you first use them or if you have not used them for a long time.
 - The ambient temperature should be between 5 °C and 40 °C.
 - Once you have used the appliance, charging time is approx. 8 hours.
 - In its fully charged state, the appliance can run for approx. 45 minutes. It is not advisable to charge the batteries after each use. Only charge the batteries when they are completely discharged. This increases their service life.
- 3 Pull the power cord out of the power cord socket **F** and the power supply unit **J** out of the wall socket.

OPERATION

Mains operation

Only operate the appliance with the power supply unit **J** provided.

Check that the voltage indicated on the type plate of the power supply unit **J** corresponds to your local power supply.

The only way to disconnect the appliance from the power supply is to unplug the power supply unit **J**.

- 1 Plug the power supply unit **J** into the wall socket.
- 2 Insert the power cord into the power cord socket **F** on the appliance.

Caution

- Never use the appliance in mains operation when you are beside a water connection.

Shaving

Note

- If the hair you shave is longer than 10 mm, pre-trim the hair with the comb attachment **I** to a length of 5 mm for an optimal shaving performance.

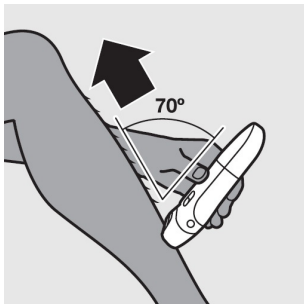
- 1 Remove the plastic protective cap **G**.

Caution

- The shaving foil and side trimmers for long hair must not be damaged. Replace any damaged parts before shaving.
- 2 Press the switch **D**, then push the switch **D** upwards to turn on the appliance.
 - 3 Stretch the skin with your free hand to make the hairs stand upright.

OPERATION

- 4 Shave with slow, gentle movements against the direction of hair growth. Hold the appliance at a 70° angle to your skin.



- Make sure that the shaving foil and side trimmer are fully in contact with your skin.

Caution

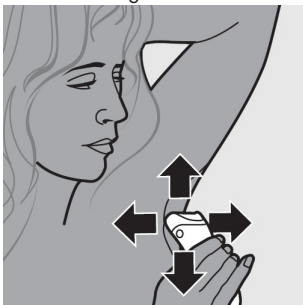
- Do not press too hard as you may damage the shaving foil.
- 5 After use, switch off the appliance by pressing the switch **D**, then pushing the switch **D** downwards, clean the shaving head (see section "Cleaning the shaving head"), and put the protective cap **G** back on.

Armpits

- 1 When you shave the underarm area, place one arm behind your head to stretch the skin.



- 2 Move the Lady Shaver gently over the skin.
- To achieve the best result, move the appliance up and down and from left to right.



Trimming

- 1 Attach the trimming comb **I** onto the appliance.
- 2 Press the switch **D**, then push the switch **D** upwards to turn on the appliance.
- 3 Move the appliance against the direction of hair growth.
 - Make sure that the surface of the comb is in full contact with the skin at all times.

Hints and Tips

- In the case of thick or copious hair growth, which cannot be removed by just one shave, do one quick shave and then a more thorough second one.
- Do not apply alcohol based-lotions to the skin directly before or after shaving. If you want, you can apply some baby powder after shaving.
- Do not press the shaving head too hard onto the skin, as this has a negative effect on shaving performance and may cause some skin irritation.
- Basically, there is no difference in using the appliance on wet skin and using it on dry skin. You can simply choose which method you like best. But if you prefer to use the Lady Shaver dry, make sure that your skin is clean and completely dry.

INFORMATION

General information

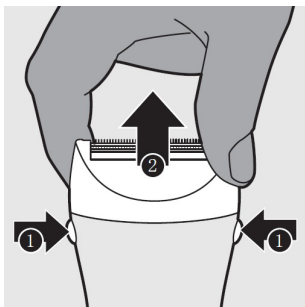
The device must be cleaned regularly so that you can continue to enjoy its top performance and optimum results. Clean the housing with a soft, damp cloth and mild detergent. Do not use household cleaning agents.

Caution

- Never hold the appliance in water or any other liquid.

Detaching/attaching the shaving head

- 1 To detach the shaving head **B**, press the release buttons **C** on both sides of the appliance and pull the shaving head **B**.



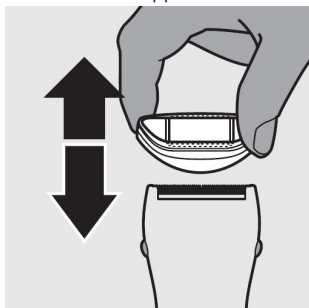
- 2 To attach the shaving head **B** push it onto the appliance.

Note

- Do not exert pressure on the shaving foil **A** to avoid damage.

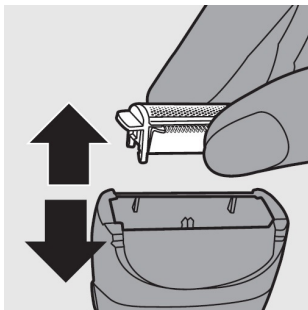
Attaching/detaching attachments

- 1 To attach protective cap **G** or trimming comb **I**, carefully put it onto the appliance. Make sure the recess of the comb is aligned with the front of the appliance.

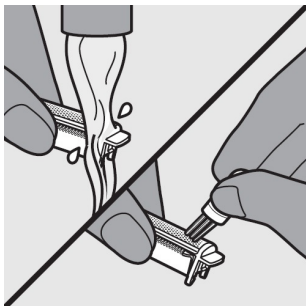


Cleaning the shaving head

- 1 Turn the appliance off and unplug the cable. Pull the power supply unit **J** out of the mains socket.
- 2 Pull up the shaving head **B** out of the attachment (see "Attaching / detaching the shaving head" section).



- 3 To clean the shaving head **B** or the cutting system **A** rinse them under running water or use the cleaning brush **K**.

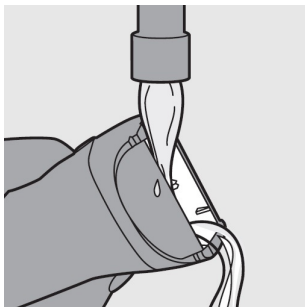


- 4 Clean the bottom of the shaving head **B** with the cleaning brush **K** supplied.

Note

- Do not clean the appliance with water over shower temperature.

5 Rinse the hair off the appliance.



- 6** Make sure the appliance is completely dry before you reattach the cutting system **A**.
- 7** Insert the cutting system **A** in the shaving head **B** again.

Storage

If you do not want to use the appliance for a long period of time, please store it carefully.

- Use the hanging holder **H** to hang the appliance securely and stable.
- Make sure that it is switched off and completely dry.
- Store the appliance and the power supply unit **J** in a cool, dry place.
- Make sure the appliance is kept out of reach of children.

Environmental note

This product has been made from high-quality parts and materials, which can be re-used and are suitable for recycling.



Therefore, do not dispose of the product with normal household waste at the end of its service life. Take it to a collection point for the

recycling of electrical and electronic equipment where the battery is taken out of the device and disposed separately. This is indicated by this symbol on the product, in the operating manual and on the packaging.

Please consult your local authorities to find out where the nearest collection point is.

Help protect the environment by recycling used products.

Technical data



This product conforms to the European directives 2004/108/EC, 2006/95/EC and 2009/125/EC.

Power Supply

Power supply unit SW-030100EUL

Input: 100 - 240 V ~, 50-60 Hz

Output: 3.6 V DC 1000 mA

Batteries: Nickel metal hydride AAA, 2.4 V



Technical and design modifications reserved.

www.grundig.com
72011 908 1700 12/33

AUS GUTEM GRUND
GRUNDIG