

HAND MIXER

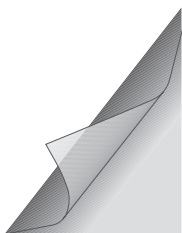
HM5040

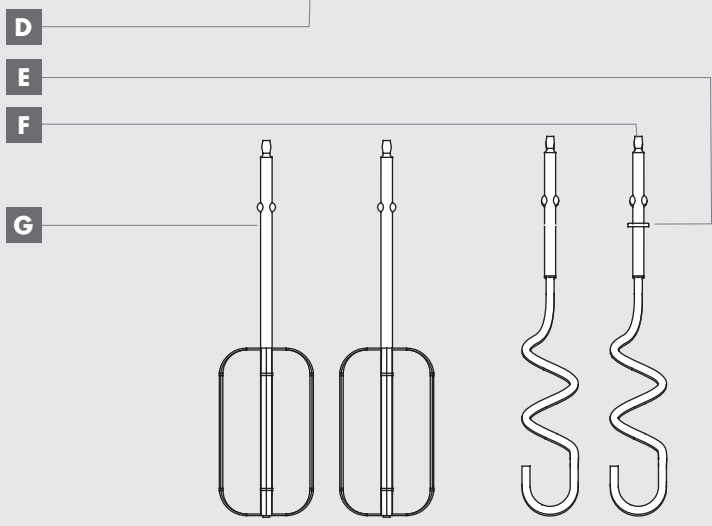
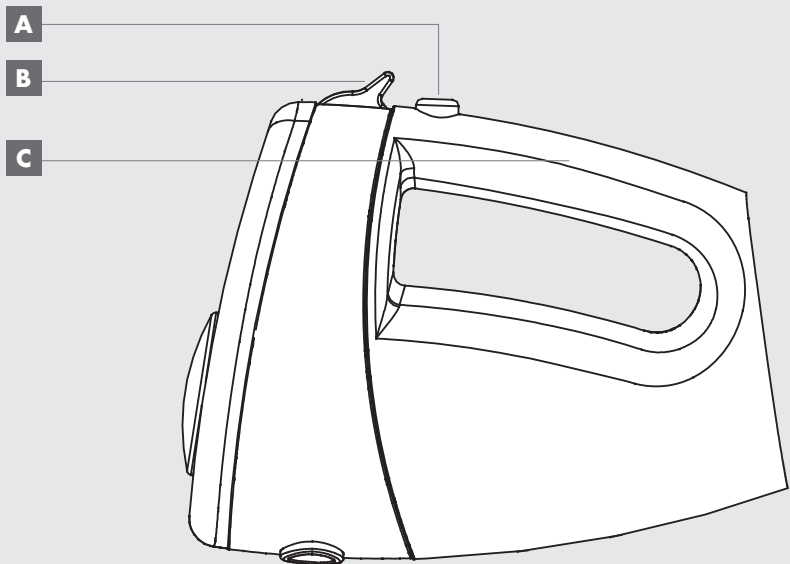
ENGLISH



FOR A GOOD REASON
GRUNDIG

Product code 1805303





SAFETY AND SET-UP

Please read this instruction manual thoroughly before using this appliance! Follow all the safety instructions to avoid damage caused by improper use.

Keep the instruction manual for future reference.

Should this appliance be given to a third party, then this instruction manual must also be handed over.

- This appliance can be used by children aged from 8 years and above and persons with reduced physical, sensory or mental capabilities or lack of experience and knowledge if they have been given supervision or instruction concerning use of the appliance in a safe way and understand the hazards involved. Children shall not play with the appliance. Cleaning and user maintenance shall not be made by children without supervision.
- Always disconnect the appliance from the supply if it is left unattended and before assembling, disassembling or cleaning.
- This appliance shall not be used by children. Keep the appliance and its cord out of reach of children.
- The appliance is designed for domestic use only.
- Do not use the appliance outdoors or in the bathroom.
- Check if the mains voltage on the rating label corresponds to your local mains supply. The only way to disconnect the appliance from the mains is to pull out the plug.

SAFETY AND SET-UP

- For additional protection, this appliance should be connected to a household faulty current protection switch with no more than 30 mA. Consult your electrician for advice.
- Do not immerse the appliance, power cord or power plug in water or in other liquids.
- Disconnect the power plug after using the appliance, before cleaning the appliance, before leaving the room or if a fault occurs. Do not disconnect the plug by pulling on the cord.
- Do not wrap the power cord around the appliance.
- Prevent damage to the power cord by not squeezing, bending or rubbing it on sharp edges. Keep the cord away from hot surfaces and open flames.
- Do not use an extension cord with the appliance.
- Never use the appliance if the power cord or the appliance is damaged.
- Our GRUNDIG Household Appliances meet applicable safety standards, thus if the appliance or power cord is damaged, it must be repaired or replaced by the dealer, a service centre or a similarly qualified and authorized service person to avoid any dangers. Faulty or unqualified repair work may cause danger and risks to the user.
- Do not dismantle the appliance under any circumstances. No warranty claims are accepted for damage caused by improper handling.

SAFETY AND SET-UP

- Keep the appliance always out of the reach of children.
- Appliances can be used by persons with reduced physical, sensory or mental capabilities or lack of experience and knowledge if they have been given supervision or instruction concerning use of the appliance in a safe way and if they understand the hazards involved. Children shall not play with the appliance.
- Do not leave the appliance unattended as long as it is in use. Extreme caution is advised when the appliance is being used near children and people with limited physical, sensory or mental capabilities.
- Before using of the appliance for first time, clean all parts. Please see details in the “Cleaning and Care” section.
- Dry the appliance before connecting it to mains supply.
- Never operate or place any part of this appliance on or near to hot surfaces such as gas burner, electric burner or heated oven.
- Do not use the appliance for anything other than its intended use.
- Operate the appliance with delivered parts only.
- Do not use the appliance with damp or wet hands.
- Always use the appliance on a stable, flat, clean and dry surface.
- Make sure that that there is no danger that the power cord could be accidentally pulled or that someone could trip over it when the appliance is in use.

SAFETY AND SET-UP

- Position the appliance in such a way that the plug is always accessible.
- Hold the appliance by the handle only.
- Do not stick any foreign objects on the appliance.
- Do not touch any moving parts on this appliance. Wait until the appliance has come to a complete standstill. Remember that long hair, loose clothing, jewellery and kitchen utensils could pose a danger should they get caught in the mixer.
- While the appliance is in operation, do not put any objects into the moving parts. There is a risk of injury.
- To avoid splashes, put the whisk/dough hook completely into the food mixture first before switching on the mixer.
- Do not use the appliance for anything other than its intended use. The Hand Mixer is designed for mixing and whisking of food only.
- Never release the attachments while the appliance is in operation.
- The hand mixer should be used on high speed for no longer than 3 minutes. Let the appliance cool down to room temperature before further use.
- Products sold in the UK have a British Standard plug. In the event of an electrical overload the fuse may blow. Please have the fuse replaced by the manufacturer or qualified service personnel. Position the appliance so the power plug is always accessible.

SAFETY AND SET-UP

- This appliance is intended to be used in household and similar applications such as:
 - staff kitchen areas in shops, offices and other working environments;
 - farm houses;
 - by clients in hotels, motels and other residential type environments;
 - bed and breakfast type environments.

AT A GLANCE

Dear Customer,

Congratulations on the purchase of your new GRUNDIG Hand Mixer HB 5040.

Please read the following user notes carefully to ensure you can enjoy your quality GRUNDIG product for many years to come.

A responsible approach!

GRUNDIG focuses on contractually agreed social working conditions with fair wages for both internal employees and suppliers, as well as on the efficient use of raw materials with continual waste reduction of several tones of plastic each year.
For a future worth living.
For a good reason. Grundig.



Controls and parts

See the figure on page 3.

- A** Turbo button
- B** Speed control and accessory release switch
- C** Handle
- D** Accessory slots for beaters and dough hooks
- E** Distance spacer on dough hook
- F** Dough hooks
- G** Beaters

Special features

Your Hand Mixer is perfectly suitable for mixing, whisking, beating food and preparing dough.

The GRUNDIG Hand Mixer is equipped with:

- Valuable Stainless Steel Beater and Dough Hook.
- 300 Watt output.
- 5 speed settings.
- Turbo Setting.

Whisk

By using beaters, you can prepare light batter mixture, eggs, egg whites, whipping cream, mayonnaise, puree, creams, sauces and pudding mixtures.

Knead

By using dough hooks, you can prepare heavy yeast dough and pastry dough, such as potato dough for making potato dumplings and potato pancakes.

OPERATION

Preparation

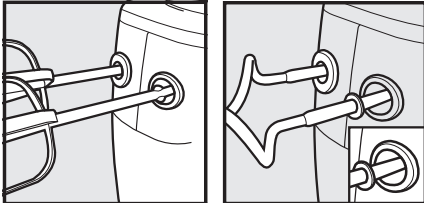
- 1 Remove all packaging and sticker materials and dispose of them according to the applicable legal regulation.
- 2 Before using of the appliance for first time, clean beaters and dough hooks (See the "Cleaning and care" section).

Operation

- 1 Make sure that the power cord has been disconnected from the wall socket and the speed control and accessory release switch **B** is on speed 0 prior to attaching the beater or dough hooks to the mixer.
- 2 Insert the beaters **G** or dough hooks **F** into the accessory slots for beaters and dough hooks **D** on the mixer until they lock into place.

Notes

- Insert dough hook with distance spacer **E** in the larger of the two accessory slots.
- The beaters can be inserted into either accessory slots **D**.



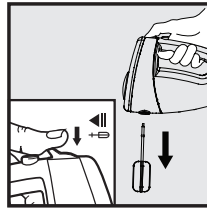
- 3 Insert the plug into the wall socket.
- 4 Hold the beaters **G** or dough hooks **F** into the food mixture before switching the hand mixer on.
- 5 Set the speed control and accessory release switch **B** on the desired speed (1 to 5 speed settings).
 - The appliance begins to operate.

Note

- Select a suitable speed level, depending on the type of food. While mixing, you can press the Turbo button **A** to briefly raise the speed level to the maximum speed. The speed of the Turbo button **A** corresponds to the level 5 of the speed control and accessory release switch **B**.

Caution

- Make sure that the operating time of the hand mixer does not exceed 3 minutes at a time.
- 6 After you finish operation, set the speed control and accessory release switch **B** to speed 0. After rotation has been stopped pull out the beaters / dough hook from the food mixture.
 - 7 Disconnect the plug from the wall socket.
 - 8 Hold the beaters **G** or dough hooks **F** with one hand and push the speed control and accessory release switch **B**.
 - The beaters **G** or dough hooks **F** will be released.



Caution

- Only press the speed control and release switch **B** if it is on position 0.

Hints and tips

- Cold food, such as butter and eggs should be brought to room temperature prior to blending them. Thus leave these types of food at room temperature for a while before mixing them.
- To avoid mixing egg shells in with the food already in the container, put them into a separate container first. Then add them to the mixture.
- Remember that climatic conditions, seasonal temperature differences, temperature and consistency of the ingredients could affect the preparation time necessary as well as the results.
- Always start blending on a low speed. Increase the speed gradually until you have reached the recommended speed for the food you are mixing.

INFORMATION

Cleaning and care

Caution

- Never use petrol, solvents or abrasive cleaners, metal objects or hard brushes to clean the appliance.
- 1 Turn the appliance off and disconnect it from the wall socket.
 - 2 Let the appliance cool down completely.
 - 3 Use a damp soft cloth to clean the exterior of the appliance.

Caution

- Never put the appliance or power cord in water or any other liquids and never hold them under running water.
- 4 Clean the beaters **G** or dough hooks **F** with warm, soapy water. Then rinse the beaters or dough hooks with clear water and dry them off thoroughly. The beaters or dough hooks can also be cleaned in the dishwasher.

Note

- Before using the appliance after cleaning, dry all parts carefully using a soft towel.

Storage

If you do not plan to use the appliance for a long period of time, please store it carefully. Wrap the power cord around the appliance. Make sure the appliance is unplugged and completely dry. Store the appliance in a cool, dry place. Make sure the appliance is kept out of the reach of children.

Technical data

Power supply: 220V-240V~ 50 Hz

Power: 300 W

Noise Level: 80 dB (A)



This products conforms to the European directives 2004/108/EC, 2006/95/EC, 2009/125/EC and 2011/65/EU

Technical and design modifications reserved.

Environmental note

This product has been made from high-quality parts and materials which can be re-used and recycled.

Therefore, do not throw the product away with normal household waste at the end of its service life. Take it to a collection point for recycling electrical and electronic devices. This is indicated by this symbol on the product, in the operating manual and on the packaging.



Please find out about collection points operated by your local authority.

Help protect the environment by recycling used products.

AUS GUTEM GRUND
GRUNDIG

www.grundig.com
720119075100 14/42

TCC Global N.V., 10/Floor, Tower H, World Trade Center
Amsterdam, Zuidplein 84, 1077XV Amsterdam, The Netherlands