

Register your product and get support at
www.philips.com/welcome

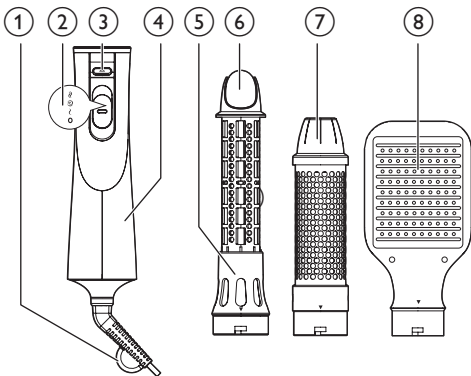
HP8655

HP8656

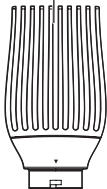


EN User manual

PHILIPS



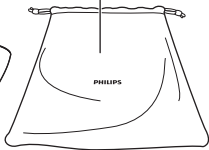
9



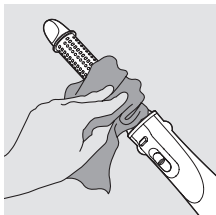
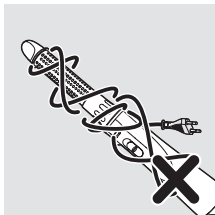
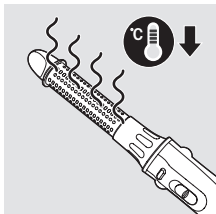
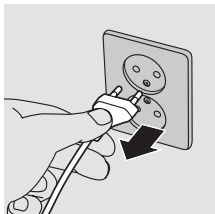
10

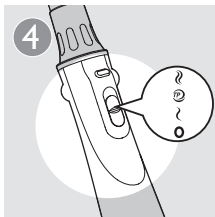
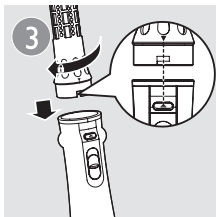
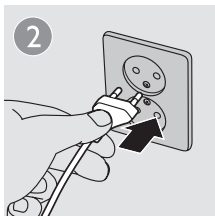


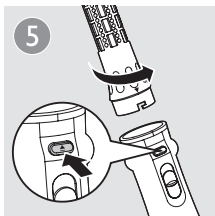
11

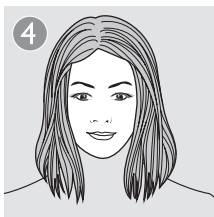


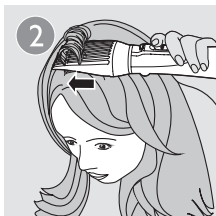
2

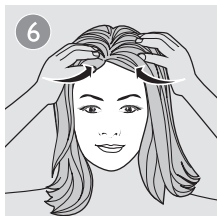
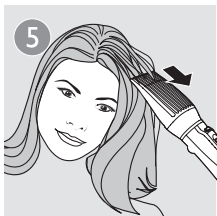


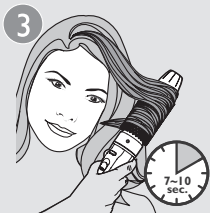


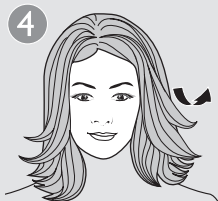
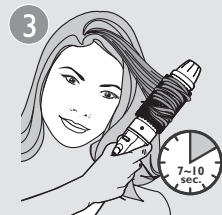


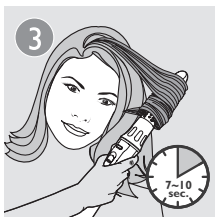
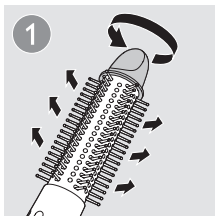


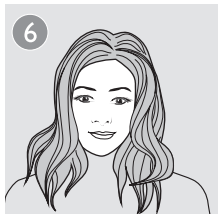













Congratulations on your purchase, and welcome to Philips! To fully benefit from the support that Philips offers, register your product at www.philips.com/welcome.

1 Important

Read this user manual carefully before you use the appliance and keep it for future reference.

- **WARNING:** Do not use this appliance near water.
- When the appliance is used in a bathroom, unplug it after use since the proximity of water presents a risk, even when the appliance is switched off.
- **WARNING:** Do not use this appliance near bathtubs, showers, basins or other vessels containing water. 
- Do not insert metal objects into the air grilles to avoid electric shock.
- Do not block the air grilles.
- Before you connect the appliance, ensure that the voltage indicated on the appliance corresponds to the local power voltage.
- Do not use the appliance for any other purpose than described in this manual.

- Only use for drying and styling scalp hair. Do not use the appliance on artificial hair.
- When the appliance is connected to the power, never leave it unattended.
- **Always unplug the appliance after use.**
- Never use any accessories or parts from other manufacturers or that Philips does not specifically recommend. If you use such accessories or parts, your guarantee becomes invalid.
- If the appliance overheats, it switches off automatically. Unplug the appliance and let it cool down for a few minutes. Before you switch the appliance on again, check the grilles to make sure they are not blocked by fluff, hair, etc.
- Do not wind the mains cord round the appliance.
- If the mains cord is damaged, you must have it replaced by Philips, a service centre authorised by Philips or similarly qualified persons in order to avoid a hazard.
- This appliance can be used by children aged from 8 years and above and persons with reduced physical, sensory or mental capabilities or lack of experience and knowledge if they have been given supervision or instruction concerning use of the appliance in a safe way and

understand the hazards involved. Children shall not play with the appliance. Cleaning and user maintenance shall not be made by children without supervision.

- For additional protection, we advise you to install a residual current device (RCD) in the electrical circuit that supplies the bathroom. This RCD must have a rated residual operating current not higher than 30mA. Ask your installer for advice.
- Wait until the appliance has cooled down before you store it.

Noise level: $L_c = 84\text{dB [A]}$

Electromagnetic fields (EMF)

This appliance complies with all standards regarding electromagnetic fields (EMF). If handled properly and according to the instructions in this user manual, the appliance is safe to use based on scientific evidence available today.

Environment

Do not throw away the appliance with the normal household waste at the end of its life, but hand it in an official collection point for recycling. By doing this, you help to preserve the environment.



2 Style your hair

Note: Always let the appliance and attachments cool down before you connect or disconnect the attachments.

Do not use the appliance on completely wet hair. Dry your hair with a towel first. The appliance is most effective on towel-dried hair.

Select a suitable attachment for the hairstyle you want.

Styling result	Attachment
Create natural straight hair	Paddle brush (8) (HP8656 only)
Create more volume at roots	Volumizer (9)
Create inward/Outward flicks	Thermobrush (7)
Create loose curls	Retractable bristle brush (5)
Dry hair	Nozzle (10)






Tip

- Before you start, apply heat protective spray to better protect your hair.

Before and after styling your hair(Fig.3)

- 1 Dry your hair with a towel.
- 2 Connect the plug to a power supply socket.
- 3 Snap a suitable attachment onto the styler with the grooves aligned, and turn the attachment left.
↳ You will hear a “click”, and the attachment is locked in place.

- Slide the airflow switch (② in Fig.1) to gentle and cool airflow  for fixing your hair style, strong and warm airflow  for fast drying and styling, or the ThermoProtect setting  for gentle drying and styling, preventing your hair from overheating.
↳ If the appliance is powered on, ions are automatically and continuously dispensed to provide additional shine and reducing frizz.
- To disconnect the attachment, press the release button (③, Fig.1) and pull it off.



Tip

- After styling, apply hair spray or mousse to fix your hairstyle.

Create natural straight hair (Fig. 4) (HP8656 only)

- Put the paddle brush (⑧ in Fig.1) on your hair.
- Brush through your hair slowly with the paddle brush, just like you would with a normal brush.
- Brush your hair backward as you like.
Tip: You may brush underneath your hair to get a more bouncy hairstyle.
- When finished, use your fingers to shape your hair.

Create more volume at roots (Fig. 5)

- Slide the volumizer (⑨ in Fig.1) into your hair, about 3 cm away from the parting of your hair.
- While holding the appliance horizontally, move the volumizer slowly towards the centre of your head, allowing hair to be pushed against the volumizer thus creating a little buildup of hair on the volumizer.
- Hold the appliance with the volumizer for 7-10 seconds.
- Tilt your hand so that the volumizer rests at an angle on your head.
- Remove the volumizer from your head, releasing the hair that was on the volumizer.

Repeat steps 2-5.

- 6 When finished, put your fingers into your hair and push it towards the centre of your head. Adjust the volume on your hair as you like.

Create inward/outward flicks(Fig. 6):

- 1 Comb your hair and divide it into several locks of hair.
- 2 Take a lock of hair, and brush it with the thermobrush (⑦ in Fig.1) downwards. Then, at the hair tips turn the brush inwards or outwards.
- 3 Hold the brush in that position for 7 to 10 seconds, and then remove it from your hair.

Repeat step 2 and 3 to the rest of your hair.

- 4 When finished, use your fingers to shape your hair ends. Adjust the flicks as you like.

Create loose curls(Fig. 7):

- 1 Turn the bristle retraction knob (⑥ in Fig.1) of the retractable bristle brush(⑤ in Fig.1) to extract the bristles.
- 2 Wind a section of hair round the brush with the bristles extracted.
- 3 Keep the brush in the position for 7 to 10 seconds.
- 4 Turn the knob(⑥ in Fig.1) to retract the bristles and remove the brush from your hair.

Repeat steps 2-4 to the rest of your hair.

- 5 When finished, twirl your curled hair around your fingers to tighten your curls.
- 6 Adjust the curls as you like to get your desired looks.

After use:

- 1 Switch off the appliance and unplug it.
- 2 Place it on a heat-resistant surface until it cools down.
- 3 Remove hairs and dust from the appliance and attachments.
- 4 Clean the appliance and attachments with a damp cloth.
- 5 Keep the appliance in a safe and dry place, free of dust. Store the main unit and attachments in the pouch (⑪ in Fig.1).
- 6 You can also hang it with the hanging loop (① in Fig.1).



Note

- The pouch is for storing the appliance and attachments.



Danger

- Avoid misuse of the pouch. Keep the pouch away from babies and children to prevent the danger of suffocation.

3 Guarantee and service

If you need more information or if you have any problems, please visit the Philips website at www.philips.com or contact the Philips Customer Care Centre in your country (you can find its phone number in the worldwide guarantee leaflet). If there is no Consumer Care Centre in your country, go to your local Philips dealer.



All registered and unregistered trademarks are property of their respective owners.

© 2012 Koninklijke Philips Electronics N.V.

All rights reserved.

3140 035 30371

