

Quick Installation Guide

300Mbps High Power Wireless USB Adapter

MODEL NO. TL-WN8200ND

Package Contents



TL-WN8200ND High Gain Antennas USB Cable

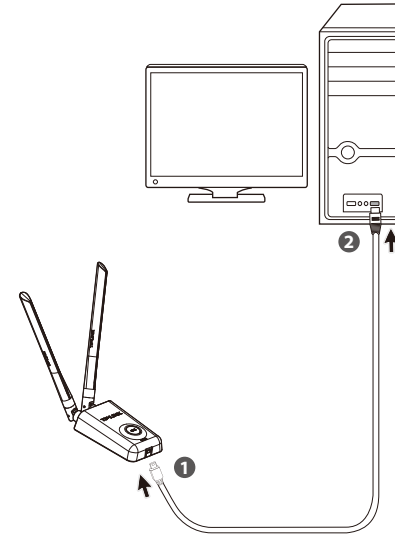


Resource CD QIG

System Requirement

- Windows 7 - Windows Vista - Windows XP

1 Hardware Connection



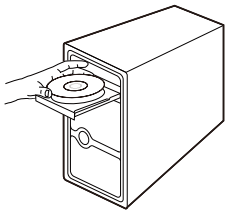
You may see the **Found New Hardware Wizard** after the adapter has been inserted. Please click 'Cancel'.



2 Software Installation

(The installation procedures in Windows 7/ Vista/ XP are similar. Here takes the procedures in Windows 7 for example.)

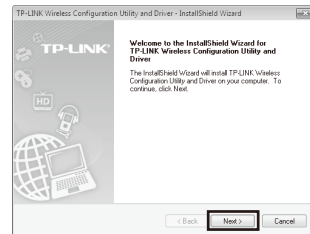
- 1 Insert the TP-LINK Resource CD into the CD-ROM drive.



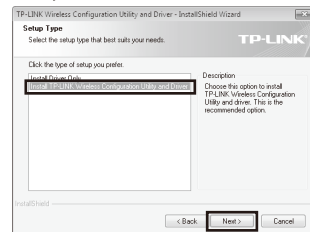
- 2 Find the model TL-WN8200ND, click it, and then select **Install Driver&Utility**.



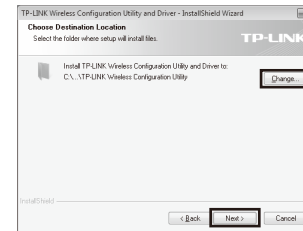
- 3 The **InstallShield Wizard** window will appear. Click **Next** to continue.



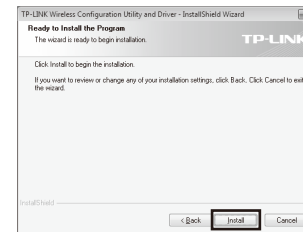
- 4 Select **Install TP-LINK Wireless Configuration Utility and Driver**, and then click **Next**.



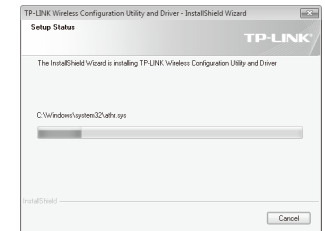
- 5 Click **Change...** to specify the destination location or you can leave it default. Click **Next** to continue.



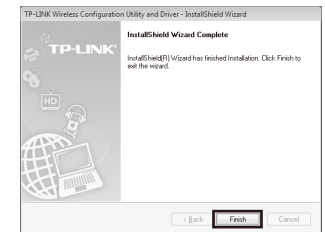
- 6 Click **Install** to install the driver and utility for your adapter.



- 7 The installation process may take 1~2 minutes.



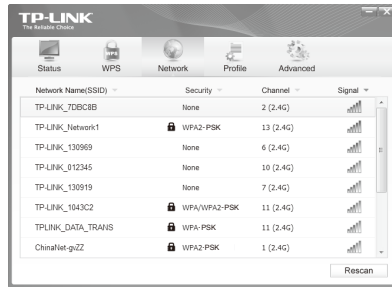
- 8 The following screen will then appear. Click **Finish** to complete the setup.



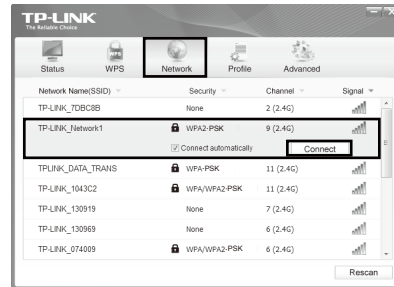
3 Connect to Network

(You can skip to **Appendix: Connect to Wireless Router by WPS** to quickly connect to a network if your Router or Access Point features WPS function.)

1 After installation, the configuration page will pop up on your desktop.



2 Click **Network** in the tools section to display a list of available wireless networks. Highlight the target network name (e.g. TP-LINK_Network1) and then click **Connect** to build a connection.

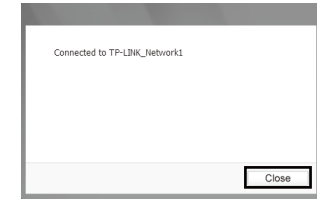


3 If the network is unsecured, you will directly connect to it. If it is secured (with WPA/WPA2-PSK), you can input the security key into the field beside **Security Key** and then click **OK** to continue.

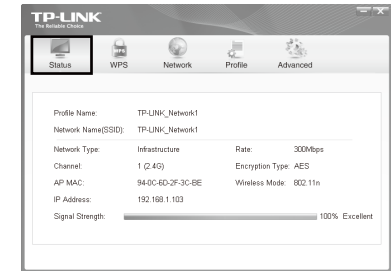


Note Without entering a key, push the WPS button on your Router as hinted "You can also connect by pushing the button on the router". Then click **OK** to continue.

4 The following screen indicates successful connectivity. Click **Close** to enjoy the Internet.



5 To view more information about the network connected, click **Status** in the tools section.



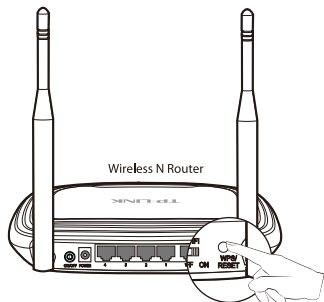
Note The icon will appear on your desktop. Double-clicking on the icon can start the utility.

Appendix: Connect to Wireless Router by WPS

If your wireless Router features the WPS function, you can also set up a wireless connection in this way.

Note For more configuration methods of WPS, please refer to the User Guide on the Resource CD.

1 Push the **WPS** button on the Router. (Here takes Router TL-WR841ND for example.)



2 Press and hold the **WPS** button on the adapter for 2~3 seconds until Figure 2 appears.



Figure 1

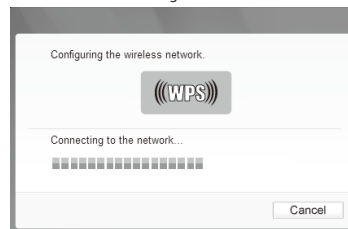
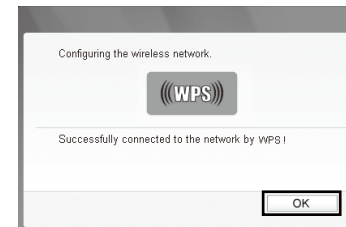


Figure 2

3 Wait for the connection process to complete. The following screen indicates successful connectivity. Click **OK** to finish the WPS connection.



Technical Support

- For more troubleshooting help, go to www.tp-link.com/en/support/faq
- To download the latest Firmware, Driver, Utility and User Guide, go to www.tp-link.com/en/support/download
- For all other technical support, please contact us by using the following details:

<p>Global Tel: +86 755 26504400 E-mail: support@tp-link.com Service time: 24hrs, 7 days a week</p> <p>UK Tel: +44 (0) 845 147 0017 E-mail: support.uk@tp-link.com Service time: 24hrs, 7days a week</p> <p>Turkey Tel: 444 19 25 (Turkish Service) E-mail: support.tr@tp-link.com Service time: 9:00 AM to 9:00 PM, 7days a week</p> <p>Ukraine Tel: 0-800-505-508 E-mail: support.ua@tp-link.com Service time: Monday to Friday 14:00 PM to 22:00 PM</p> <p>Brazil Toll Free: 0800-770-4337 (Portuguese Service) E-mail: suporte.br@tp-link.com Service time: Monday to Saturday 08:00 AM to 08:00 PM</p> <p>France Tel: +33 (0) 820 800 860 (French service) Email: support.fr@tp-link.com Fee: 0.11€ EUR/min from France Service time: Monday to Friday 9:00 AM to 6:00 PM (Except French Bank holidays)</p> <p>Russian Federation Tel: 8 (499) 754-55-60 8 (800) 250-55-60 (toll-free call from any RF region) E-mail: support.ru@tp-link.com Service time: From 10:00 to 18:00 (Moscow time) *Except weekends and holidays in Russian Federation</p> <p>Switzerland Tel: +41 (0)848 800998 (German Service) E-mail: support.ch@tp-link.com Fee: 4-8 Rp/min, depending on rate of different time Service time: Monday to Friday 9:00 AM to 6:00 PM, GMT+1 or GMT+2 (Daylight Saving Time)</p>	<p>Singapore Tel: +65 62840493 E-mail: support.sg@tp-link.com Service time: 24hrs, 7 days a week</p> <p>USA/Canada Toll Free: +1 866 225 8139 E-mail: support.usa@tp-link.com Service time: 24hrs, 7 days a week</p> <p>Australia & New Zealand Tel: AU 1300 87 5465 NZ 0800 87 5465 E-mail: support@tp-link.com.au (Australia) support.nz@tp-link.com (New Zealand) Service time: 24hrs, 7 days a week</p> <p>Italy Tel: +39 0230519020 E-mail: support.it@tp-link.com Service time: Monday to Friday, 9:00 AM to 1:00 PM, 2:00 PM to 6:00 PM</p> <p>Indonesia Tel: (+62) 021 6259 135 E-mail: support.id@tp-link.com Service time: Monday to Friday 9:00-12:00; 13:00-18:00 *Except public holidays</p> <p>Malaysia Tel: 1300 88 875465 (1300 88TPLINK) E-mail: support.my@tp-link.com Service time: Monday to Friday 9:00 AM to 6:00 PM (Except French Bank holidays)</p> <p>Poland Tel: +48 (0) 801 080 618 / +48 22 7217563 (if calls from mobile phone) E-mail: support.pl@tp-link.com Service time: Monday to Friday 9:00 AM to 5:00 PM, GMT+1 or GMT+2 (Daylight Saving Time)</p> <p>Germany / Austria Tel: +49 1805 875465 (German Service) +49 1805 TPLINK E-mail: support.de@tp-link.com Fee: 0.14 EUR/min from the German fixed phone network and up to 0.42EUR/min from mobile phone. Service Time: Monday to Friday, 9:00 AM to 6:00 PM, GMT+1 or GMT+2 (Daylight Saving Time in Germany) * Except bank holidays in Hesse</p>
---	---