

Wire-Wound Fixed Resistors:

Feature:

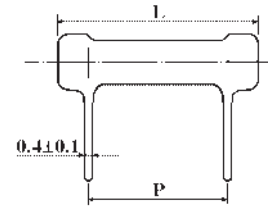
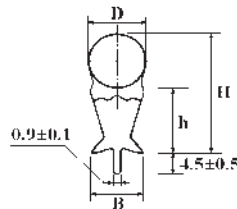
- Excellent flame resistance
- Green body color
- Too low or high ohmic value can be supplied on a case to case basis



KNP Type



KNS Type



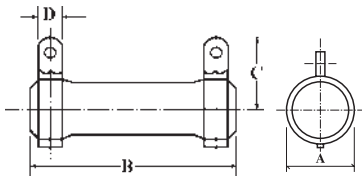
| Part No. | Type | Power Rating At 70°C | Dimension (mm) | | | | | | Resistance Range |
|----------|----------|----------------------|----------------|---------|-------|-------|-------|---------|------------------|
| | | | D Max. | L ± 1.5 | P ± 1 | H ± 1 | h ± 1 | B ± 0.5 | |
| KNS02W | KNS-200 | 2W | 8 | 19 | 8 | 19 | 12 | 4.5 | 0.1Ω ~ 50Ω |
| KNS03W | KNS-300 | 3W | 8 | 21 | 10 | 19 | 13 | 4.5 | 0.5Ω ~ 50Ω |
| KNS05W | KNS-500 | 5W | 10 | 26 | 15 | 21.5 | 13 | 6.5 | 0.5Ω ~ 100Ω |
| KNS07W | KNS-700 | 7W | 10 | 31 | 20 | 21.5 | 13 | 6.5 | 1Ω ~ 1KΩ |
| KNS08W | KNS-800 | 8W | 10 | 41 | 30 | 21.5 | 13 | 6.5 | 1Ω ~ 1.5KΩ |
| KNS0AW | KNS-1000 | 10W | 10 | 54 | 43 | 21.5 | 13 | 6.5 | 1Ω ~ 2KΩ |

KNP Type

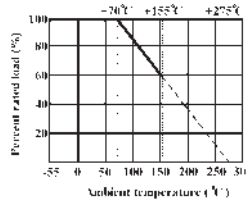
| Part No. | Type | Power Rating At 70°C | Dimension (mm) | | | | Resistance Range |
|--------------------|------------|----------------------|----------------|--------|-------------------------------------|-------|------------------|
| | | | D ± 1 | L Max. | d ^{+0.02} _{-0.05} | H ± 3 | |
| Normal Size | | | | | | | |
| KNP0W2 | KNP-50 | 1/2W | 4 | 10 | 0.7 | 28 | 0.1Ω ~ 39Ω |
| KNP01W | KNP-100 | 1W | 5 | 12 | 0.7 | 28 | 0.1Ω ~ 50Ω |
| KNP02W | KNP-200 | 2W | 5.5 | 16 | 0.8 | 28 | 0.1Ω ~ 120Ω |
| KNP03W | KNP-300 | 3W | 6.5 | 17.5 | 0.8 | 28 | 0.1Ω ~ 200Ω |
| KNP05W | KNP-500 | 5W | 8.5 | 26 | 0.8 | 38 | 0.5Ω ~ 470Ω |
| KNP07W | KNP-700 | 7W | 8.5 | 32 | 0.8 | 38 | 0.5Ω ~ 470Ω |
| KNP08W | KNP-800 | 8W | 8.5 | 41 | 0.8 | 38 | 1Ω ~ 1.5KΩ |
| KNP09W | KNP-900 | 9W | 8.5 | 54 | 0.8 | 38 | 1Ω ~ 1.5KΩ |
| Small Size | | | | | | | |
| KNP01S | KNP-100-S | 1W | 4 | 10 | 0.7 | 28 | 0.1Ω ~ 39Ω |
| KNP02S | KNP-200-S | 2W | 5 | 12 | 0.7 | 28 | 0.1Ω ~ 50Ω |
| KNP03S | KNP-300-S | 3W | 5.5 | 16 | 0.8 | 28 | 0.1Ω ~ 120Ω |
| KNP05S | KNP-500-S | 5W | 6.5 | 17.5 | 0.8 | 28 | 0.1Ω ~ 200Ω |
| KNP07S | KNP-700-S | 7W | 8.5 | 26 | 0.8 | 38 | 0.5Ω ~ 470Ω |
| KNP08S | KNP-800-S | 8W | 8.5 | 32 | 0.8 | 38 | 0.5Ω ~ 470Ω |
| KNP09S | KNP-900-S | 9W | 8.5 | 41 | 0.8 | 38 | 1Ω ~ 1.5KΩ |
| KNP0AS | KNP-1000-S | 10W | 8.5 | 54 | 0.8 | 38 | 1Ω ~ 1.5KΩ |

Wire-Wound Fixed Resistors:

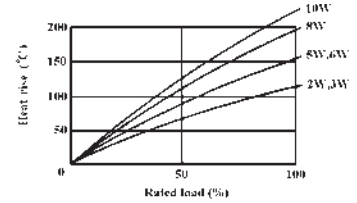
KNH Type



Derating Curve



Heat Rise Chart



KNH Type

| Part No. | Type | Power Rating At 70°C | Dimension (mm) | | | | Resistance Range |
|-------------|----------|----------------------|----------------|---------|-------|-------|------------------|
| | | | A ± 1.5 | B ± 1.5 | C ± 3 | D ± 1 | |
| KNH020 | KNH-20W | 20W | 19 | 50 | 19 | 5 | 0.4Ω ~ 1KΩ |
| KNH030 | KNH-30W | 30W | 19 | 75 | 19 | 5 | 0.5Ω ~ 3KΩ |
| KNH040 | KNH-40W | 40W | 19 | 90 | 19 | 5 | 0.6Ω ~ 5KΩ |
| KNH050 | KNH-50W | 50W | 31 | 75 | 31 | 8 | 3Ω ~ 10KΩ |
| KNH060 | KNH-60W | 60W | 31 | 90 | 31 | 8 | 3Ω ~ 15KΩ |
| KNH080 | KNH-80W | 80W | 31 | 115 | 31 | 8 | 3Ω ~ 20KΩ |
| KNH.....100 | KNH-100W | 100W | 31 | 140 | 31 | 8 | 3Ω ~ 30KΩ |

Performance Specifications

| | |
|-------------------------------------|---|
| Temperature coefficient | ≥20Ω: ±300PPM/°C; <20Ω: ±400PPM/°C |
| Short-time overload | ΔR/R ≤ ±(2%+0.05Ω), with no evidence of mechanical damage |
| Terminal strength | No evidence of mechanical damage |
| Resistance to soldering heat | ΔR/R ≤ ±(1%+0.05Ω), with no evidence of mechanical damage |
| Solderability | Min. 95% coverage. |
| Load life in humidity | ΔR/R ≤ ±(5%+0.05Ω), with no evidence of mechanical damage |
| Load life | ΔR/R ≤ ±(5%+0.05Ω), with no evidence of mechanical damage |

Ordering Procedure (Example: KNP 3W-S 5% 12 Ω T/B-1000)

Special Features: 0 = Standard product, I = Non-Inductive product

Wattage: Normal size:

1W = 1W, 2W = 2W, 3W = 3W, 5W = 5W, 7W = 7W, 8W = 8W, 9W = 9W, AW = 10W, 20 = 20W, 30 = 30W, 40 = 40W, 50 = 50W, 60 = 60W, 80 = 80W

Small size: 1S = 1W-S, 2S = 2W-S, 3S = 3W-S, 5S = 5W-S, 7S = 7W-S, 8S = 8W-S, 9S = 9W-S, AS = 10W-S

*** 00 = for power rating over 100W. Please indicate the power rating at the last 3 digits of the part no. (B/B Only)

Tolerance: G = ±2%, J = ±5%, K = ±10%

Resistance Value:

E-24 series:

The 1st digit is "0"; the 2nd & 3rd digits are for the significant figures of the resistance and the 4th digit indicate the numbers of zeros following

Packing Type: A = Tape/Box, T = Tape/Reel, B = Bulk/Box

Packing Quantity:

1 = 1,000pcs, A = 500pcs, B = 2,500pcs, 0 = for Bulk/Box packing

Additional Information: 0 = NIL

Product Type:
KNP = KNP Type
KNS = KNS Type
KNH = KNH Type

K N P 0 3 S J 0 1 2 0 A 1 0