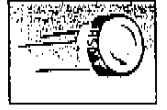


- Single-Turn / Cermet / Industrial / Sealed
- Top and side adjust types

WIW3329

Round Trimming Potentiometer



Electrical Characteristics

- Standard Resistance Range
 - 10 to 2 megohms (see standard resistance table)
- Resistance Tolerance
 - $\pm 10\%$ or $\pm 20\%$ std. (tighter tolerance available)
- Absolute Minimum Resistance
 - 1% or 2 ohms max. (whichever is greater)
- Contact Resistance Variation
 - 3% or 3 ohms max. (whichever is greater)
- Adjustability
 - Voltage $\pm 0.05\%$
 - Resistance $\pm 0.15\%$

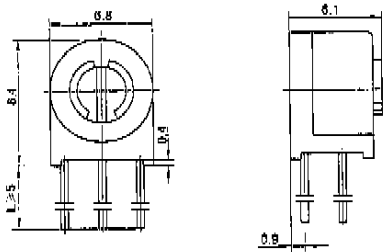
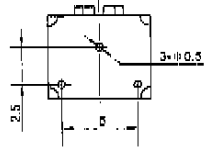
- Resolution
 - Infinite
- Insulation Resistance
 - 500 Vdc 1,000 megohms min.
- Dielectric Strength
 - 101.3 kPa 500 Vac
 - 8.5 kPa 315 Vac
- Adjustment Angle
 - $210^\circ \pm 10^\circ$ nom.

Environmental Characteristics

- Power Rating (250 volts max.)
 - 0.5 watt (70°C), 0 watt (125°C)
- Temperature Range
 - -55°C to +125°C
- Temperature Coefficient
 - ± 100 ppm/°C
- Vibration
 - 98 m/s² (3% Δ TR; 2% Δ VR)
- Shock
 - 390 m/s² (3% Δ TR; 2% Δ VR)
- Load Life
 - 1,000 hours 0.5 watt @ 70°C (3% Δ TR; 3% or 3 ohms, Whichever is greater, CRV)
- Rotational Life
 - 100 cycles (3% Δ TR; 3% or 3 ohms, Whichever is greater, CRV)

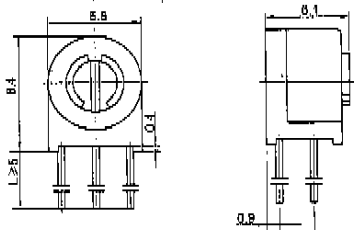
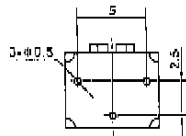
Physical Characteristics

- Mechanical Angle
 - $250^\circ \pm 10^\circ$ nom.
- Torque
 - 20 mN * m max.
- Stop Strength
 - 35 mN * m min.

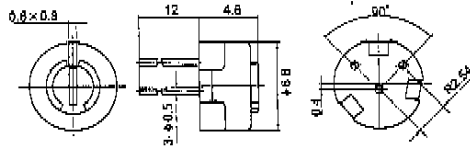


WIW3329X

→ 75T

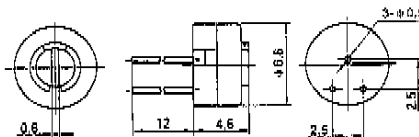


WIW3329S

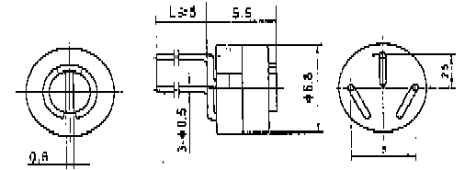


WIW3329H-1

→ 75H

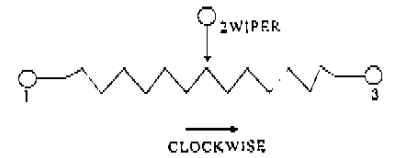
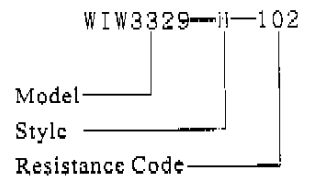


WIW3329H



WIW3329P → 75P

How to order



Standard Resistance Table

| Resistance (Ohms) | Resistance Code |
|-------------------|-----------------|
| 10 | 100 |
| 20 | 200 |
| 50 | 500 |
| 100 | 101 |
| 200 | 201 |
| 500 | 501 |
| 1,000 | 102 |
| 2,000 | 202 |
| 5,000 | 502 |
| 10,000 | 103 |
| 20,000 | 203 |
| 35,000 | 253 |
| 50,000 | 503 |
| 100,000 | 104 |
| 200,000 | 204 |
| 250,000 | 254 |
| 500,000 | 504 |
| 1,000,000 | 105 |
| 2,000,000 | 205 |

Special resistance available
TCR of shaded areas ± 250 ppm/°C

Detail Specification: Q/R Y237-2000