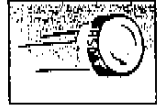


- Single-Turn / Cermet / Industrial / Sealed
- Top and side adjust types

WIW3329

Round Trimming Potentiometer



Electrical Characteristics

- Standard Resistance Range
 - 10 to 2 megohms (see standard resistance table)
- Resistance Tolerance
 - $\pm 10\%$ or $\pm 20\%$ std. (tighter tolerance available)
- Absolute Minimum Resistance
 - 1% or 2 ohms max. (whichever is greater)
- Contact Resistance Variation
 - 3% or 3 ohms max. (whichever is greater)
- Adjustability
 - Voltage $\pm 0.05\%$
 - Resistance $\pm 0.15\%$

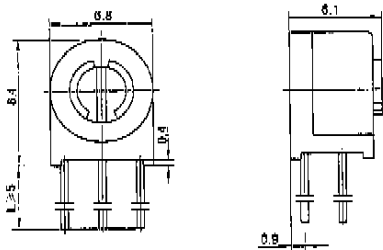
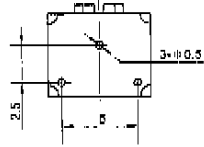
- Resolution
 - Infinite
- Insulation Resistance
 - 500 Vdc 1,000 megohms min.
- Dielectric Strength
 - 101.3 kPa 500 Vac
 - 8.5 kPa 315 Vac
- Adjustment Angle
 - $210^\circ \pm 10^\circ$ nom.

Environmental Characteristics

- Power Rating (250 volts max.)
 - 0.5 watt (70°C), 0 watt (125°C)
- Temperature Range
 - -55°C to +125°C
- Temperature Coefficient
 - ± 100 ppm/°C
- Vibration
 - 98 m/s² (3% Δ TR; 2% Δ VR)
- Shock
 - 390 m/s² (3% Δ TR; 2% Δ VR)
- Load Life
 - 1,000 hours 0.5 watt @ 70°C (3% Δ TR; 3% or 3 ohms, Whichever is greater, CRV)
- Rotational Life
 - 100 cycles (3% Δ TR; 3% or 3 ohms, Whichever is greater, CRV)

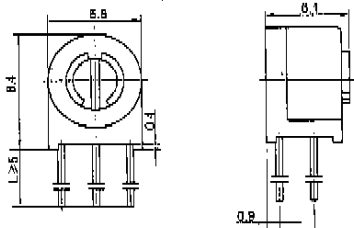
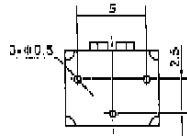
Physical Characteristics

- Mechanical Angle
 - $250^\circ \pm 10^\circ$ nom.
- Torque
 - 20 mN * m max.
- Stop Strength
 - 35 mN * m min.

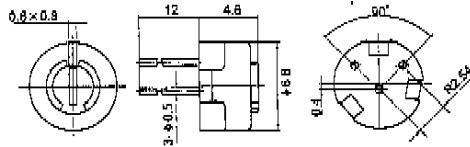


WIW3329X

→ 75T

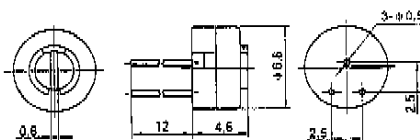


WIW3329S

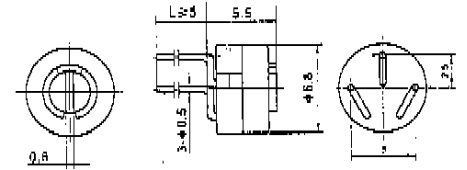


WIW3329H-1

→ 75H

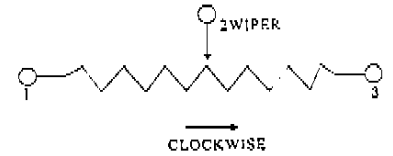
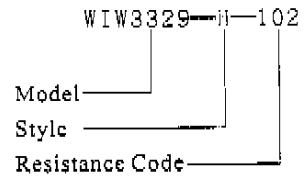


WIW3329H



WIW3329P → 75P

How to order



Standard Resistance Table

Resistance (Ohms)	Resistance Code
10	100
20	200
50	500
100	101
200	201
500	501
1,000	102
2,000	202
5,000	502
10,000	103
20,000	203
35,000	253
50,000	503
100,000	104
200,000	204
250,000	254
500,000	504
1,000,000	105
2,000,000	205

Special resistance available
TCR of shaded areas ± 250 ppm/°C

Detail Specification: Q/R Y237-2000