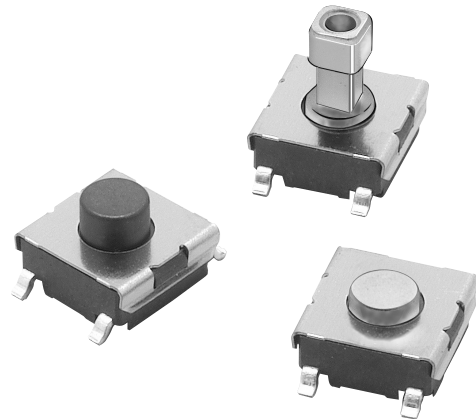


Surface-mounting Switches Ideal for High-density Mounting

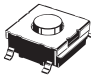

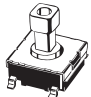
- Tape packing style also available
- Allows reflow soldering
- 3 actuator heights for design flexibility; Projected plunger versions allow installation of B32-series keytops

RoHS Compliant



Ordering Information

■ List of Models

Type	Plunger type	Height	Operating force (OF)	Plunger color	Bag		Embossed taping		
					Model	Quantity per package	Model	Quantity per package	
6 × 6 mm B3FS-1000 models	 (Flat type)	3.1 mm	0.98 N {100 gf}	Black	B3FS-1000	100	B3FS-1000P	3,000	
			1.47 N {150 gf}	Ivory	B3FS-1002		B3FS-1002P		
			2.55 N {260 gf}	Blue	B3FS-1005		B3FS-1005P		
	 (Flat type)	4.3 mm	0.98 N {100 gf}	Black	B3FS-1010		B3FS-1010P		1,000
			1.47 N {150 gf}	Ivory	B3FS-1012		B3FS-1012P		
			2.55 N {260 gf}	Blue	B3FS-1015		B3FS-1015P		
	 (Projected type)	7.3 mm	0.98 N {100 gf}	Black	B3FS-1050		B3FS-1050P		
			1.47 N {150 gf}	Yellow	B3FS-1052		B3FS-1052P		

Note: Order in multiples of the minimum order unit. Switches are not sold individually.

Specifications

■ Ratings/Characteristics

Switching capacity	1 to 50 mA, 5 to 24 VDC (resistive load)
Ambient operating temperature	-25°C to +70°C at 60%RH max. (with no icing or condensation)
Ambient operating humidity	35% to 85% (at +5 to +35°C)
Contact configuration	SPST-NO
Contact resistance	100 mΩ max. (initial value) (rated: 1 mA, 5 VDC)
Insulation resistance	100 MΩ min. (at 100 VDC)
Dielectric strength	250 VAC, 50/60 Hz for 1 min
Bounce time	5 ms max.
Vibration resistance	Malfunction: 10 to 55 Hz, 1.5-mm double amplitude
Shock resistance	Destruction: 1,000 m/s ² {approx. 100G} max. Malfunction: 100 m/s ² {approx. 10G} max.
Durability	Standard models (0.98 N {100 gf}): 1,000,000 operations min. High-force models (1.47 N {150 gf}): 300,000 operations min. High-force models (2.55 N {260 gf}): 100,000 operations min.
Weight	B3FS-1000: Approx. 0.2 g

■ Operating Characteristics

Item	B3FS-1000		
	0.98 N	1.47 N	2.55 N
Operating force (OF)	0.98±0.29 N {100±30 gf}	1.47±0.49 N {150±50 gf}	2.55±0.69 N {260±70 gf}
Releasing force (RF)	0.2 N {20 gf} min.	0.49 N {50 gf} min.	0.49 N {50 gf} min.
Pretravel (PT)	0.25 ^{+0.2} / _{-0.1} mm		

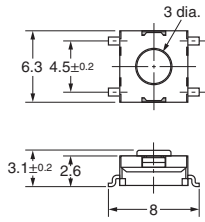
Dimensions

- Note:** 1. All units are in millimeters unless otherwise indicated. Unless otherwise specified, a tolerance of ± 0.4 mm applies to all dimensions.
 2. The numbers used for terminals in the following graphics are indicated in the "Bottom View" diagram below. In this diagram, the Switch is rotated so that the terminals are on the right and left-hand sides, and the OMRON logo appears the right way up.

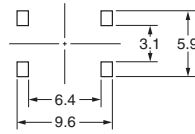


Flat Type

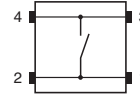
- B3FS-1000
- B3FS-1002
- B3FS-1005
- B3FS-1000P
- B3FS-1002P
- B3FS-1005P



PCB Pad (Top View) (One-side PCB t= 1.6)

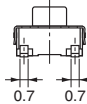
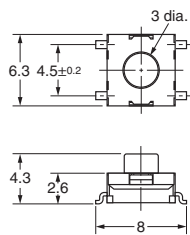


Terminal Arrangement/ Internal Connection (Top View)

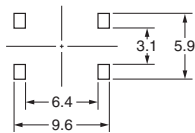


Flat Type

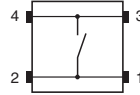
- B3FS-1010
- B3FS-1012
- B3FS-1015
- B3FS-1010P
- B3FS-1012P
- B3FS-1015P



PCB Pad (Top View) (One-side PCB t= 1.6)

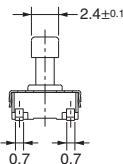
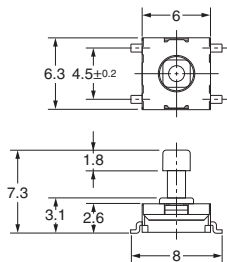


Terminal Arrangement/ Internal Connection (Top View)

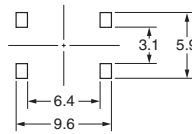


Projected Type

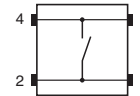
- B3FS-1050
- B3FS-1052
- B3FS-1050P
- B3FS-1052P



PCB Pad (Top View) (One-side PCB t= 1.6)



Terminal Arrangement/ Internal Connection (Top View)



Key Tops

B32-series Special Key Tops are available for projected plunger models. Refer to the Datasheet of B32 for details.

Precautions

Be sure to read the safety precautions common to all Tactile Switches for correct use.

ALL DIMENSIONS SHOWN ARE IN MILLIMETERS.
 To convert millimeters into inches, multiply by 0.03937. To convert grams into ounces, multiply by 0.03527.