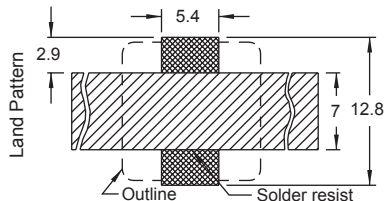
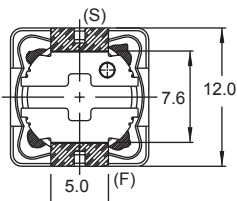
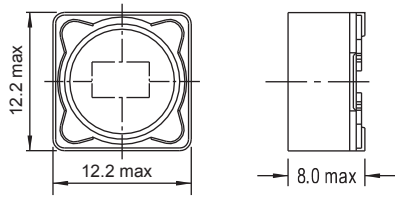
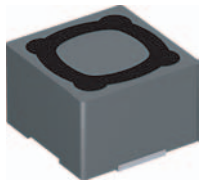
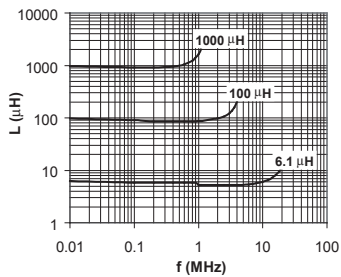


# PIS 4728

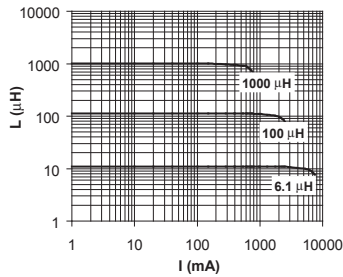


\* In order to prevent short circuit, a solder resist is recommended

Typical L vs Frequency(f)



Typical L vs Current



Part No	Inductance L (μH)	f <sub>L</sub> (kHz)	Tol ± (%)	DCR max (mΩ)	Rated DC Current I <sub>sat</sub> (A)
PIS4728-1R2N-04	1.2	100	30	7	9.8
PIS4728-2R4N-04	2.4	100	30	11.5	8
PIS4728-3R5N-04	3.5	100	30	13.5	7.5
PIS4728-4R7N-04	4.7	100	30	15.8	6.8
PIS4728-6R1N-04	6.1	100	30	17.6	6.6
PIS4728-7R6N-04	7.6	100	30	20	5.9
PIS4728-100M-04	10	1	20	21.6	5.4
PIS4728-120M-04	12	1	20	24.3	4.9
PIS4728-150M-04	15	1	20	27	4.5
PIS4728-180M-04	18	1	20	39.2	3.9
PIS4728-220M-04	22	1	20	43.2	3.6
PIS4728-270M-04	27	1	20	45.9	3.4
PIS4728-330M-04	33	1	20	64.8	3
PIS4728-390M-04	39	1	20	72.9	2.75
PIS4728-470M-04	47	1	20	100	2.5
PIS4728-560M-04	56	1	20	110	2.35
PIS4728-680M-04	68	1	20	140	2.1
PIS4728-820M-04	82	1	20	160	1.95
PIS4728-101M-04	100	1	20	220	1.7
PIS4728-121M-04	120	1	20	250	1.6
PIS4728-151M-04	150	1	20	280	1.42
PIS4728-181M-04	180	1	20	350	1.3
PIS4728-221M-04	220	1	20	390	1.6
PIS4728-271M-04	270	1	20	560	1.06
PIS4728-331M-04	330	1	20	640	0.95
PIS4728-391M-04	390	1	20	700	0.88
PIS4728-471M-04	470	1	20	980	0.79
PIS4728-561M-04	560	1	20	1070	0.73
PIS4728-681M-04	680	1	20	1480	0.67
PIS4728-821M-04	820	1	20	1640	0.6
PIS4728-102M-04	1000	1	20	1820	0.55

Material : Ferrite  
SPQ : Reel 500 [-04]

Remark : Isat - see description in Inductors Technical Data page 51

SMD Power Inductors & Shielded