

# Electronic housing - EG 22,5-AG/ABS GN - 2906636

Please be informed that the data shown in this PDF Document is generated from our Online Catalog. Please find the complete data in the user's documentation. Our General Terms of Use for Downloads are valid (<http://download.phoenixcontact.com>)



Housing cover, closed

Illustration shows a fully mounted version of the electronic housing

## Product Features

- Tool-free mounting
- Date of manufacture and material and part identification embossed on the housing (recyclability)
- Fast snap-on mounting on symmetrical DIN rails according to EN 60715
- Optimum accommodation of electronic components with graded pitches with a design width of 22.5 mm, 45 mm, 67.5 mm, and 90 mm
- Functional and industry-oriented housing technology
- Practical and easy-to-wire conductor connection using extra finely stranded sturdy screw terminal blocks up to 2.5 mm<sup>2</sup>
- Shock and contamination-proof accommodation of electronic components (IP40 housing, IP20 terminal blocks)

## Key commercial data

<b>package_quantity</b>	10
<b>GTIN</b>	4017918126438

## Technical data

### General

<b>Housing type</b>	Upper part
<b>Color</b>	green

### Dimensions

<b>Constructional height</b>	17.5 mm
<b>Width</b>	22.5 mm

### Technical data

<b>Number of positions</b>	8
----------------------------	---

## classifications

### eCl@ss

<b>eCl@ss 4.0</b>	27180401
<b>eCl@ss 4.1</b>	27180401
<b>eCl@ss 5.0</b>	27180506

# Electronic housing - EG 22,5-AG/ABS GN - 2906636

## classifications

### eCl@ss

eCl@ss 5.1	27180506
eCl@ss 6.0	27180802
eCl@ss 7.0	27182702
eCl@ss 8.0	27182702

### ETIM

ETIM 2.0	EC001031
ETIM 3.0	EC001031
ETIM 4.0	EC001031
ETIM 5.0	EC000886

### UNSPSC

UNSPSC 6.01	31261501
UNSPSC 7.0901	31261501
UNSPSC 11	31261501
UNSPSC 12.01	31261501
UNSPSC 13.2	31261501


## approvals

---

UL Recognized /

---

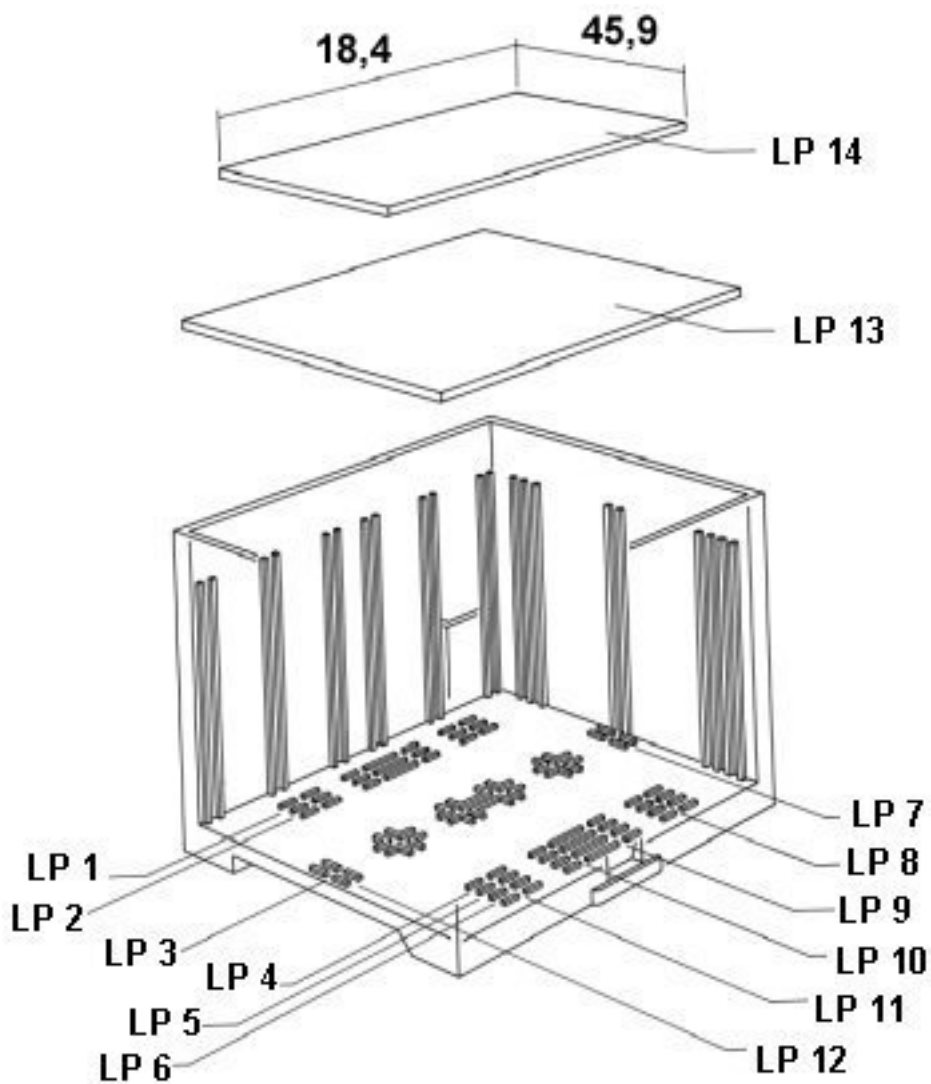
### Approval details

UL Recognized 
---

## Drawings

# Electronic housing - EG 22,5-AG/ABS GN - 2906636

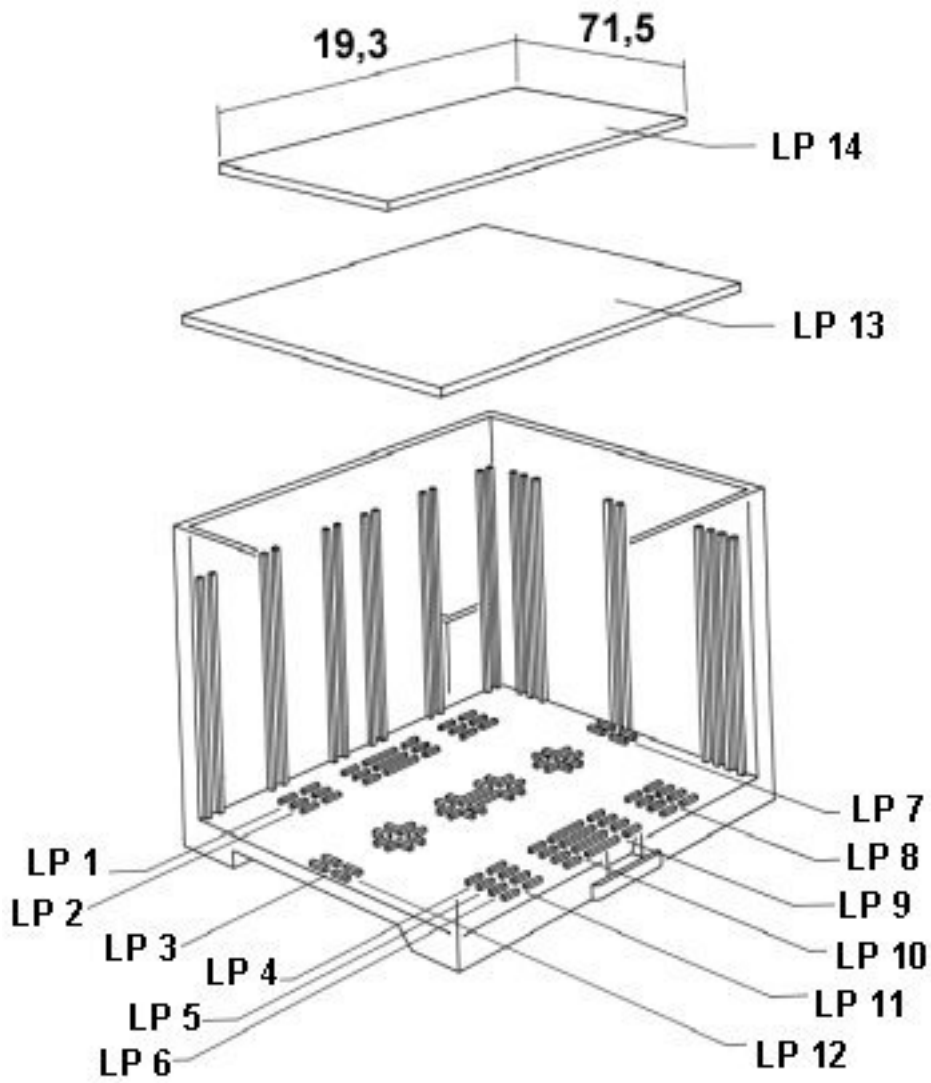
Explosion drawing



valid for PCB 14

# Electronic housing - EG 22,5-AG/ABS GN - 2906636

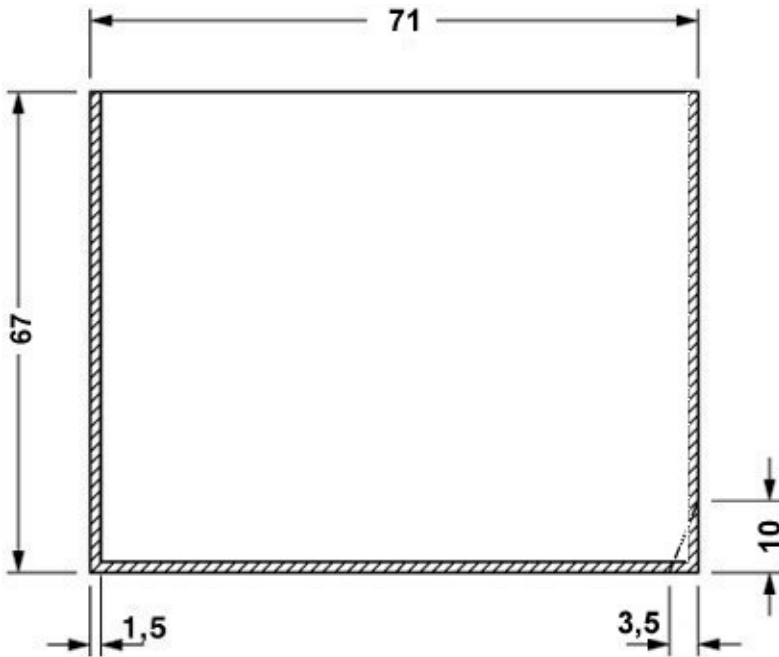
Explosion drawing



valid for PCB 13

# Electronic housing - EG 22,5-AG/ABS GN - 2906636

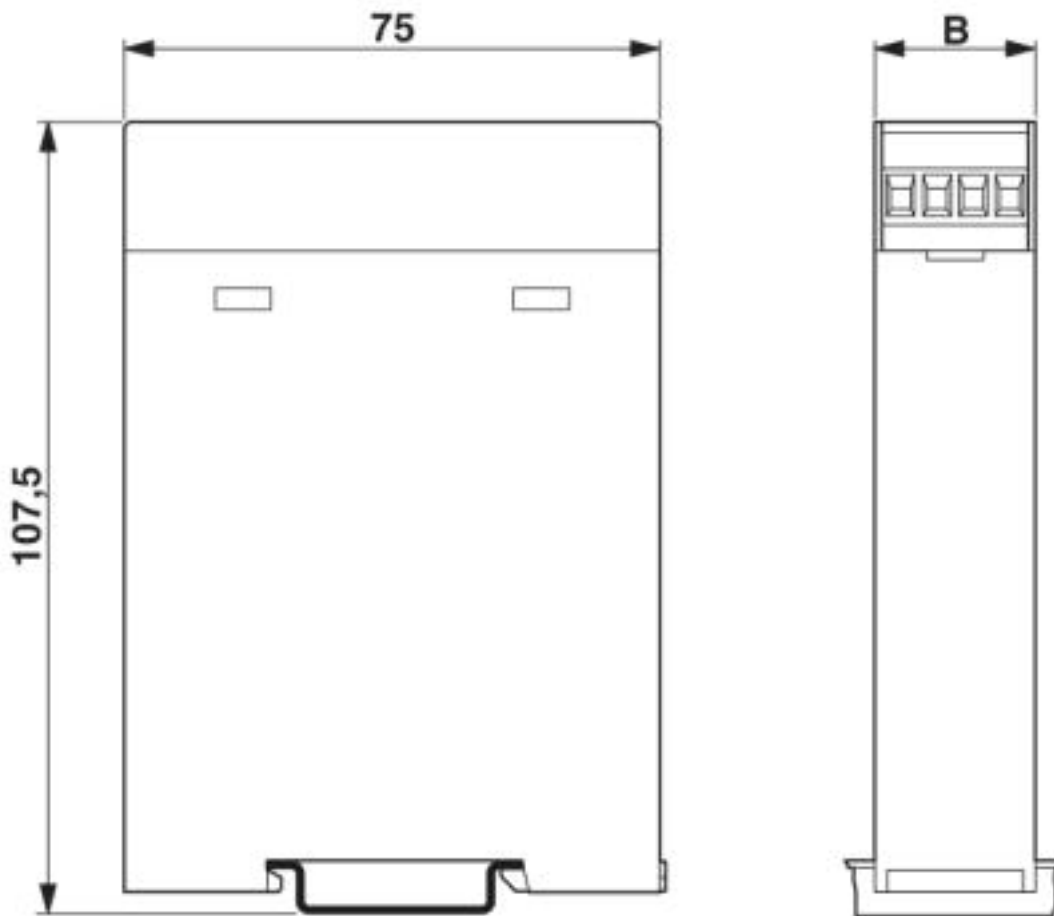
Dimensioned drawing



valid for PCB 7, see explosion drawing

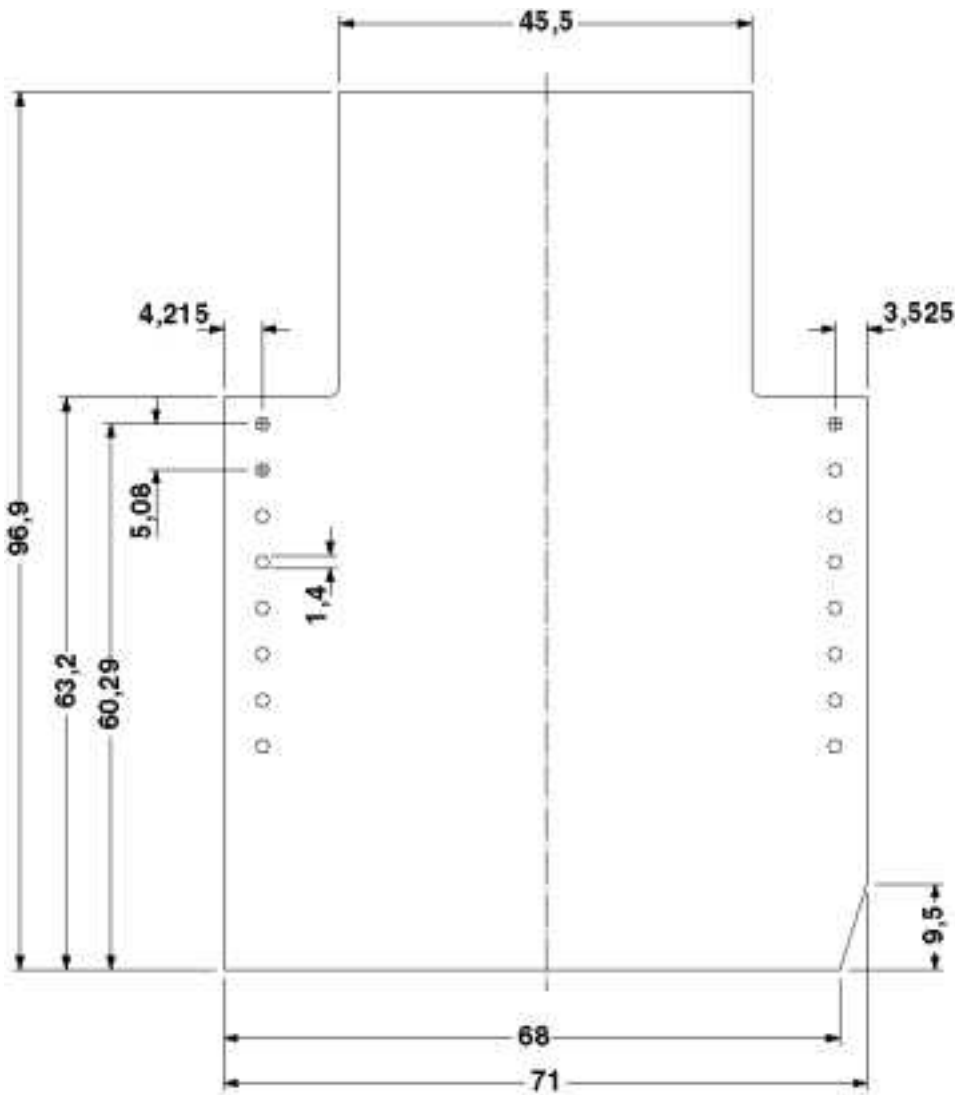
# Electronic housing - EG 22,5-AG/ABS GN - 2906636

Dimensioned drawing



# Electronic housing - EG 22,5-AG/ABS GN - 2906636

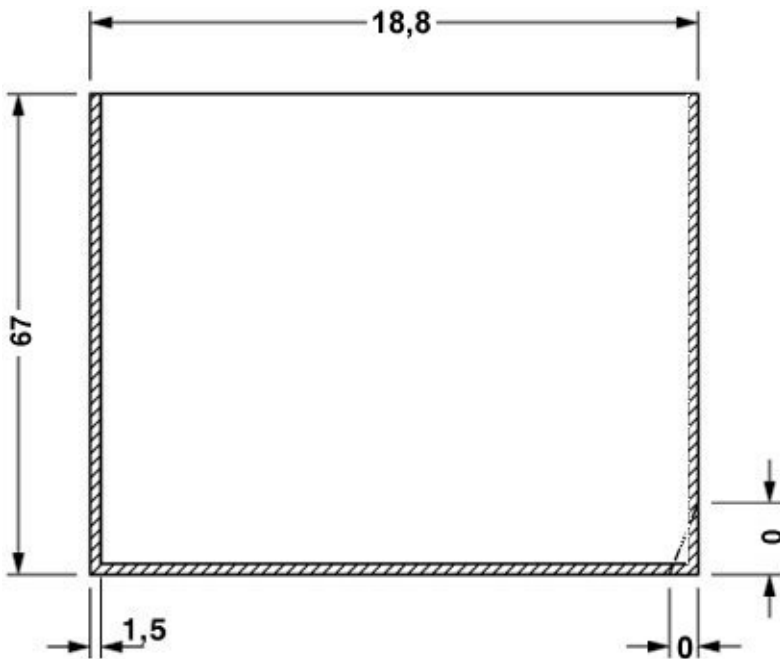
Dimensioned drawing



Component mounting side, if the double-level upper part is used

# Electronic housing - EG 22,5-AG/ABS GN - 2906636

Dimensioned drawing



valid for PCB 1, see explosion drawing

© Phoenix Contact 2013 - all rights reserved  
<http://www.phoenixcontact.com>