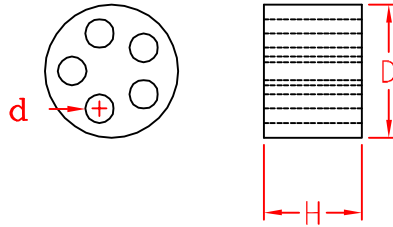


MH-5 TYPE



ITEM NO.	D	d	H
MH14-5A	14±0.5	2.8±0.25	9.2±0.25
MH18-5A	17.5±0.5	2.0±0.25	9.0±0.25
MH18-5B	17.5±0.5	2.8±0.25	9.0±0.25
MH18-5C	17.5±0.5	3.1±0.25	9.0±0.25
MH18-5D	17.5±0.5	4.1±0.25	9.0±0.25
MH23-5A	22.8±0.5	2.0±0.25	11.2±0.35
MH23-5B	22.8±0.5	3.1±0.25	11.2±0.35
MH23-5C	22.8±0.5	3.6±0.25	11.2±0.35
MH23-5D	22.8±0.5	4.1±0.25	11.2±0.35
MH23-5E	22.8±0.5	4.6±0.25	11.2±0.35
MH23-5F	22.8±0.5	6.0±0.25	11.2±0.35
MH30-5A	30.4±1.0	3.6±0.25	14.4±0.35
MH30-5B	30.4±1.0	4.6±0.25	14.4±0.35
MH30-5C	30.4±1.0	6.0±0.25	14.4±0.35
MH30-5D	30.4±1.0	8.0±0.25	14.4±0.35
MH39-5A	39.0±1.0	8.3±0.35	17.3±0.35
MH42-5A	41.8±1.0	8.3±0.35	17.0±0.35

		MATERIAL	ITEM NO.
		TPE	MH-5 TYPE
SCALE		FINISH	NAME Multi-Hole Seal (5 HOLES)
△	(. .)	TOLERANCE AS FIGURE	△ 04-20-2012 DATE REVISIONS K001
			R.NO.

