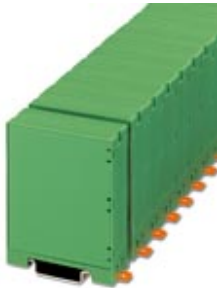


Electronic housing - EMUG 22- BE - 2943479

Please be informed that the data shown in this PDF Document is generated from our Online Catalog. Please find the complete data in the user's documentation. Our General Terms of Use for Downloads are valid (<http://download.phoenixcontact.com>)



Base element with snap-on foot, for mounting on standard DIN rail, 22.5 mm wide

Key commercial data

| | |
|------------------|---------------|
| package_quantity | 10 |
| GTIN | 4017918081119 |

classifications

eCl@ss

| | |
|------------|----------|
| eCl@ss 4.0 | 27180401 |
| eCl@ss 4.1 | 27180401 |
| eCl@ss 5.0 | 27180506 |
| eCl@ss 5.1 | 27180506 |
| eCl@ss 6.0 | 27180802 |
| eCl@ss 7.0 | 27182702 |
| eCl@ss 8.0 | 27182702 |

ETIM

| | |
|----------|----------|
| ETIM 2.0 | EC001031 |
| ETIM 3.0 | EC001031 |
| ETIM 4.0 | EC001031 |
| ETIM 5.0 | EC001031 |

UNSPSC

| | |
|---------------|----------|
| UNSPSC 6.01 | 31261501 |
| UNSPSC 7.0901 | 31261501 |
| UNSPSC 11 | 31261501 |
| UNSPSC 12.01 | 31261501 |
| UNSPSC 13.2 | 31261501 |

accessories

Terminal marking

Electronic housing - EMUG 22- BE - 2943479

accessories

SK U/3,8 WH:UNBEDRUCKT - 0803906



Device marking

EMG-GKS 22 - 2941594



accessories

EMG-GKS 12 - 2947035



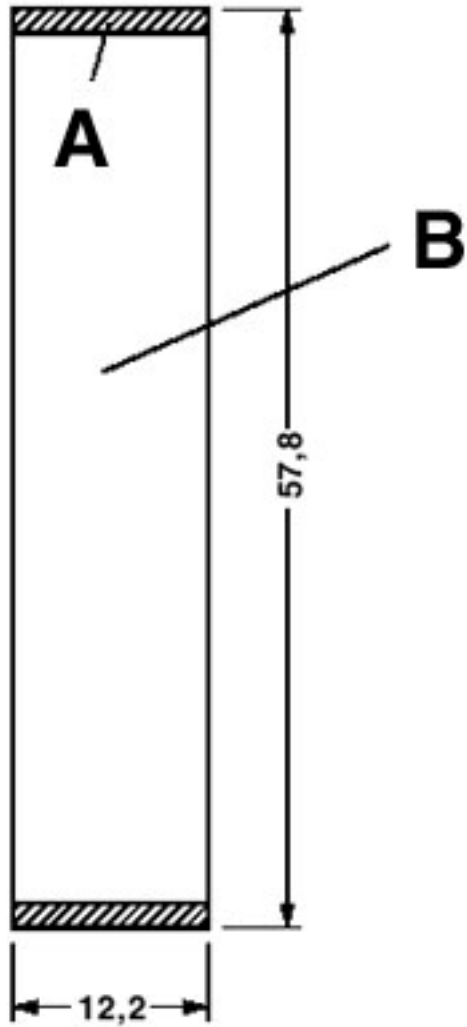
EMG-SGKS 10 - 2947585



Drawings

Electronic housing - EMUG 22- BE - 2943479

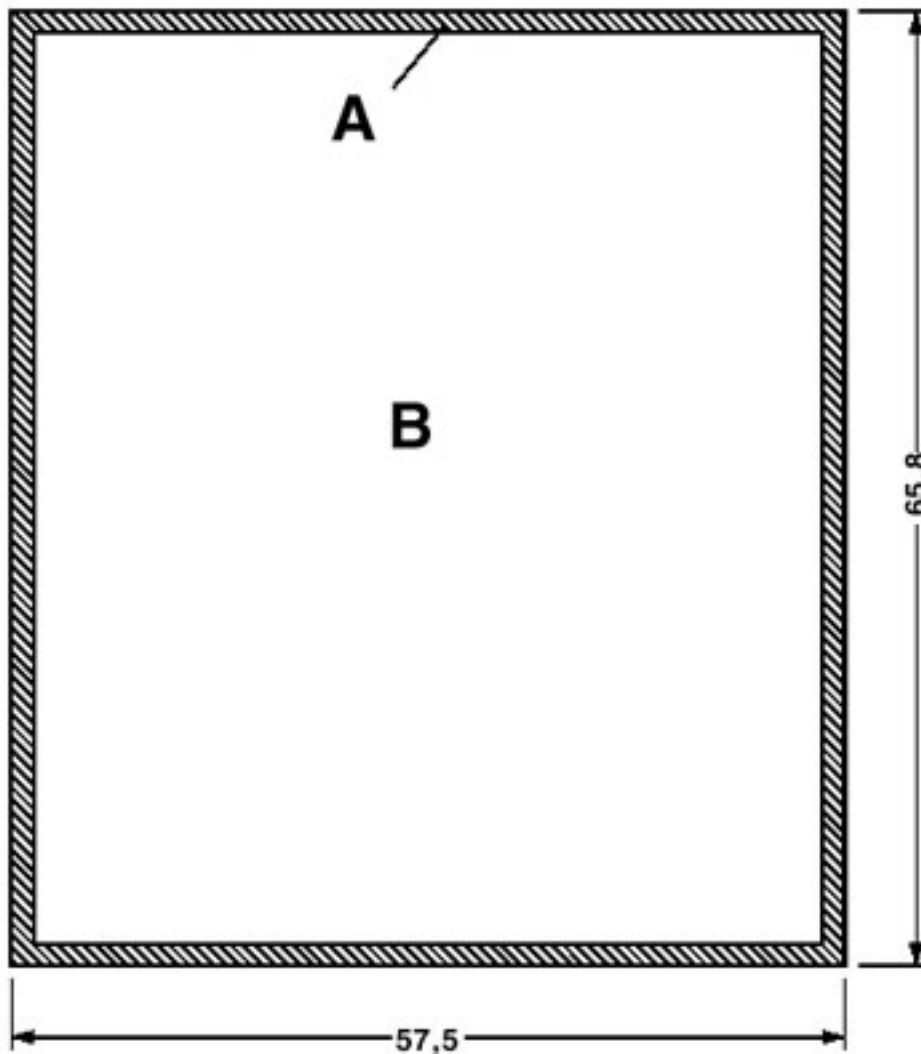
Dimensioned drawing



PCB 1 and 2 for EMUG 22 (horizontal) A = PCB edge = 1.5 mm B = Overall component area

Electronic housing - EMUG 22- BE - 2943479

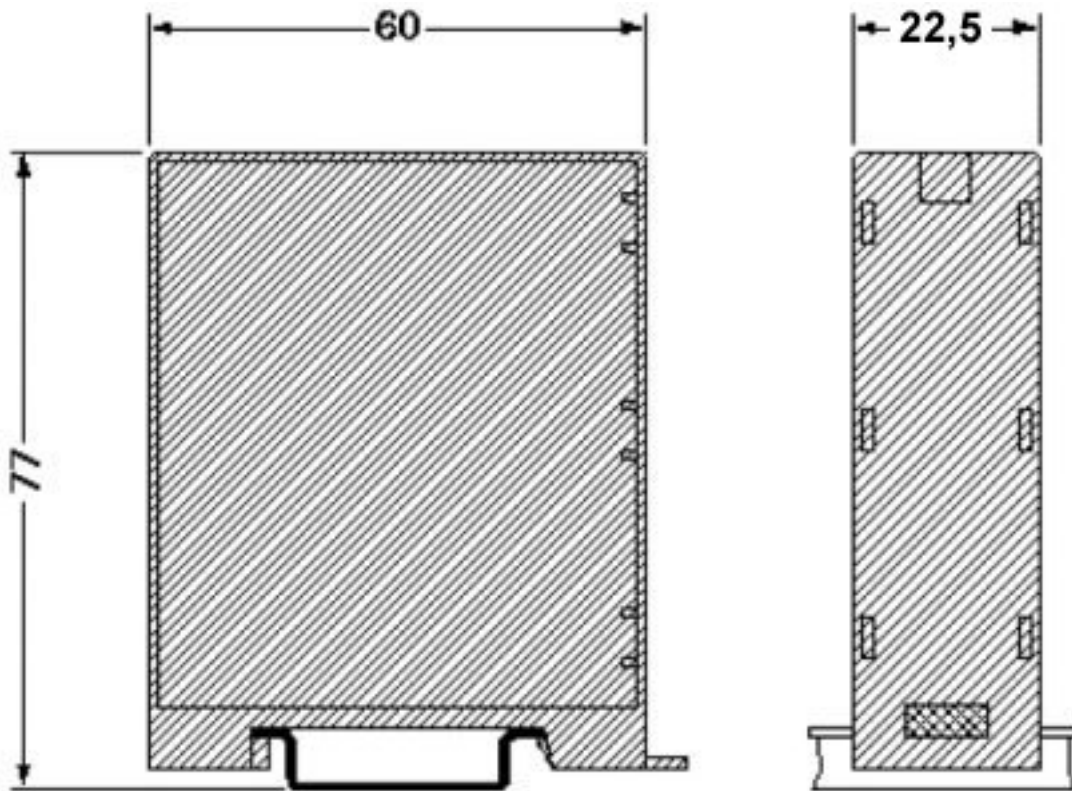
Dimensioned drawing



PCB 3 and 4 for EMUG 25 and EMUG 45 parallel to housing panel -
side panel A = PCB edge = 1.5 mm B = Overall component area

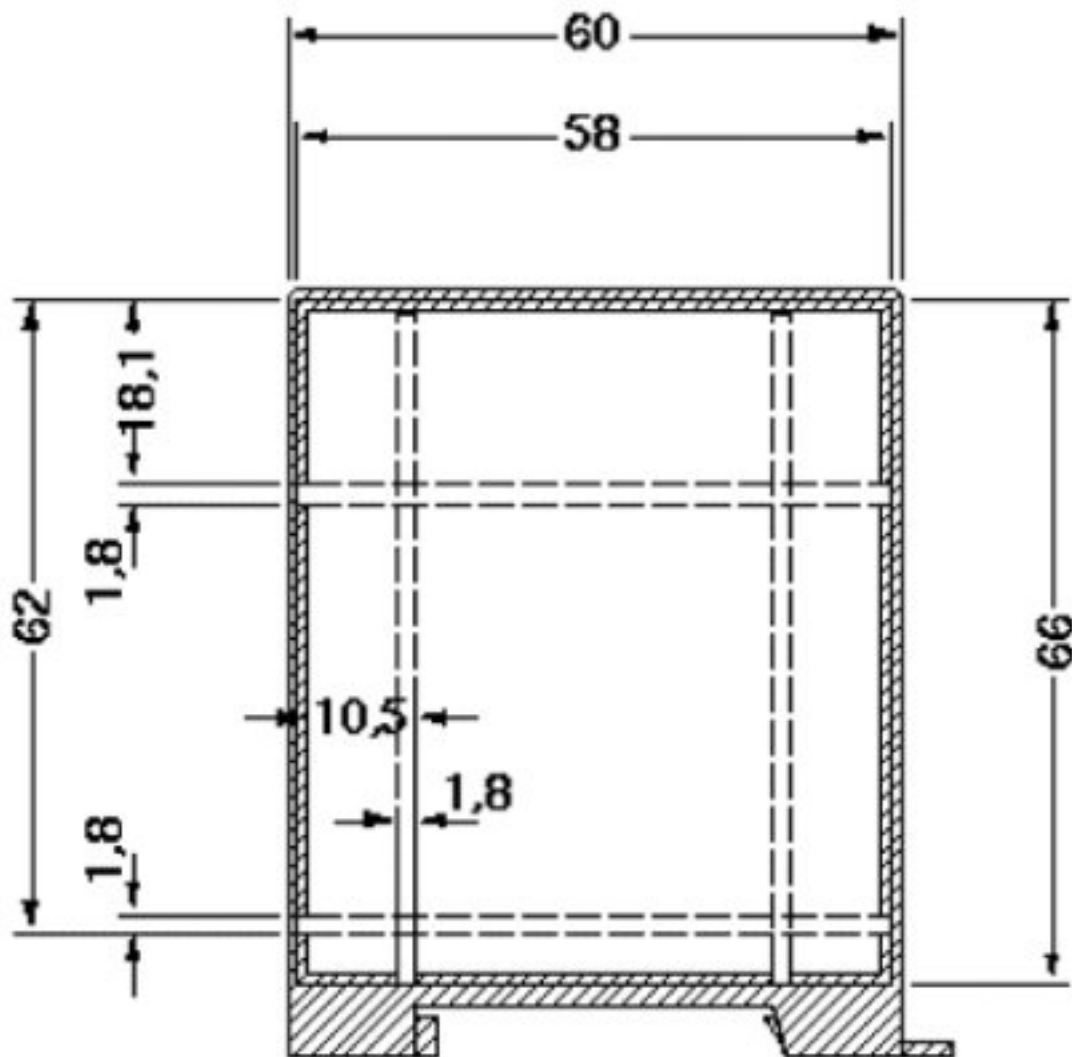
Electronic housing - EMUG 22- BE - 2943479

Dimensioned drawing



Electronic housing - EMUG 22- BE - 2943479

Dimensioned drawing



© Phoenix Contact 2013 - all rights reserved
<http://www.phoenixcontact.com>