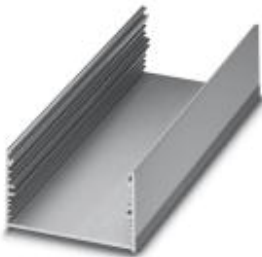


# Components of electronic housing - UM-ALU 4 AU75 L235 - 2200969

Please be informed that the data shown in this PDF Document is generated from our Online Catalog. Please find the complete data in the user's documentation. Our General Terms of Use for Downloads are valid (<http://download.phoenixcontact.com>)



Panel mounting base, Upper part, Color: aluminum, Width: 235 mm, Constructional height: 43.1 mm

## Key commercial data

<b>package_quantity</b>	1
<b>GTIN</b>	4046356721110

## Technical data

### General

<b>Housing type</b>	Panel mounting base
<b>Housing material</b>	Aluminum
<b>Color</b>	aluminum

### Dimensions

<b>Constructional height</b>	43.1 mm
<b>Width</b>	235 mm

## classifications

### eCl@ss

<b>eCl@ss 4.0</b>	27180401
<b>eCl@ss 4.1</b>	27180401
<b>eCl@ss 5.0</b>	27180506
<b>eCl@ss 5.1</b>	27180506
<b>eCl@ss 6.0</b>	27182003
<b>eCl@ss 7.0</b>	27182701
<b>eCl@ss 8.0</b>	27182701

### ETIM

<b>ETIM 3.0</b>	EC001031
<b>ETIM 4.0</b>	EC000721
<b>ETIM 5.0</b>	EC000721

### UNSPSC

# Components of electronic housing - UM-ALU 4 AU75 L235 - 2200969

## classifications

### UNSPSC

UNSPSC 6.01	31261501
UNSPSC 7.0901	31261501
UNSPSC 11	31261501
UNSPSC 12.01	31261501
UNSPSC 13.2	31261501

## Drawings

### Dimensioned drawing

