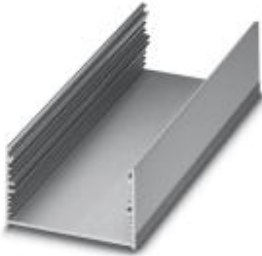


# Components of electronic housing - UM-ALU 4 AU75 L60 - 2200964

Please be informed that the data shown in this PDF Document is generated from our Online Catalog. Please find the complete data in the user's documentation. Our General Terms of Use for Downloads are valid (<http://download.phoenixcontact.com>)



Panel mounting base, Upper part, Color: aluminum, Width: 60 mm, Constructional height: 43.1 mm

## Key commercial data

<b>package_quantity</b>	1
<b>GTIN</b>	4046356721066

## Technical data

### General

<b>Housing type</b>	Panel mounting base
<b>Housing material</b>	Aluminum
<b>Color</b>	aluminum

### Dimensions

<b>Constructional height</b>	43.1 mm
<b>Width</b>	60 mm

## classifications

### eCl@ss

<b>eCl@ss 4.0</b>	27180401
<b>eCl@ss 4.1</b>	27180401
<b>eCl@ss 5.0</b>	27180506
<b>eCl@ss 5.1</b>	27180506
<b>eCl@ss 6.0</b>	27182003
<b>eCl@ss 7.0</b>	27182701
<b>eCl@ss 8.0</b>	27182701

### ETIM

<b>ETIM 3.0</b>	EC001031
<b>ETIM 4.0</b>	EC000721
<b>ETIM 5.0</b>	EC000721

### UNSPSC

# Components of electronic housing - UM-ALU 4 AU75 L60 - 2200964

## classifications

### UNSPSC

UNSPSC 6.01	31261501
UNSPSC 7.0901	31261501
UNSPSC 11	31261501
UNSPSC 12.01	31261501
UNSPSC 13.2	31261501

## Drawings

### Dimensioned drawing

