

Electronic housing - CM175-LG/H 35/BO/DB/GH BK - 2941507

Please be informed that the data shown in this PDF Document is generated from our Online Catalog. Please find the complete data in the user's documentation. Our General Terms of Use for Downloads are valid (<http://download.phoenixcontact.com>)



Electronic module, for PCB insertion, with a 35 mm tall covering hood

Product Features

- Flexible accommodation of different connection elements (from high-position connectors to electronic PCBs)
- Rugged housing technology
- Easy snap-on mounting on symmetrical DIN rails according to EN 60715
- Shock and contamination-proof accommodation of electronic components

Key commercial data

package_quantity	5
GTIN	4017918080471

Technical data

General

Housing type	Complete housing
Housing material	Polycarbonate fiber reinforced
Color	black

Ambient conditions

Ambient temperature (operation)	-40 °C ... 125 °C
---------------------------------	-------------------

Dimensions

Length	125 mm
Constructional height	155 mm
Width	175 mm

Technical data

Inflammability class according to UL 94	V0
Power dissipation at 20°C in the horizontal mounting position	120 W 160 W

classifications

eCl@ss

eCl@ss 4.0	27180401
eCl@ss 4.1	27180401

Electronic housing - CM175-LG/H 35/BO/DB/GH BK - 2941507

classifications

eCl@ss

eCl@ss 5.0	27180506
eCl@ss 5.1	27180506
eCl@ss 6.0	27180802
eCl@ss 7.0	27182702
eCl@ss 8.0	27182702

ETIM

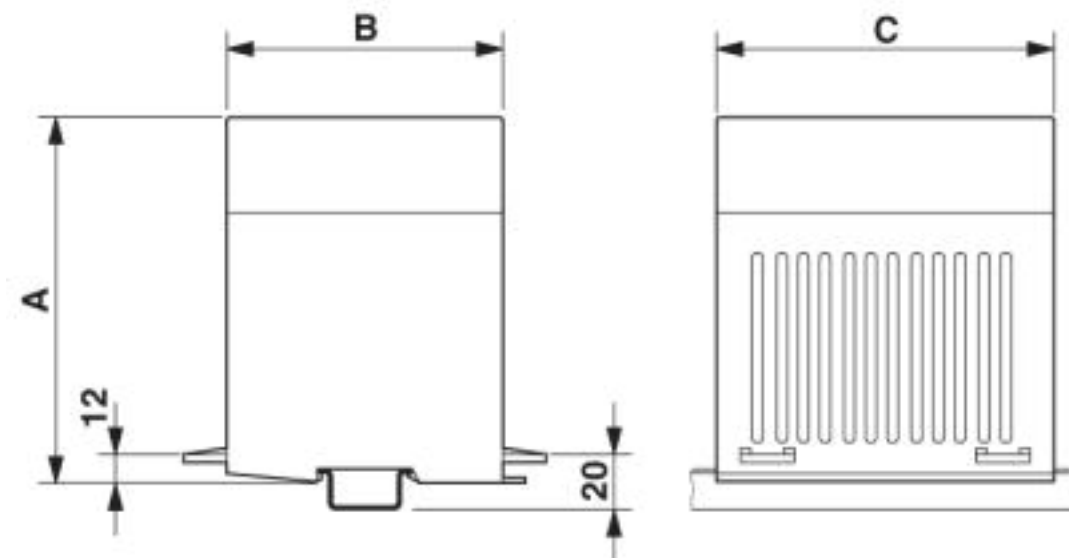
ETIM 2.0	EC001031
ETIM 3.0	EC001031
ETIM 4.0	EC001031
ETIM 5.0	EC001031

UNSPSC

UNSPSC 6.01	31261501
UNSPSC 7.0901	31261501
UNSPSC 11	31261501
UNSPSC 12.01	31261501
UNSPSC 13.2	31261501

Drawings

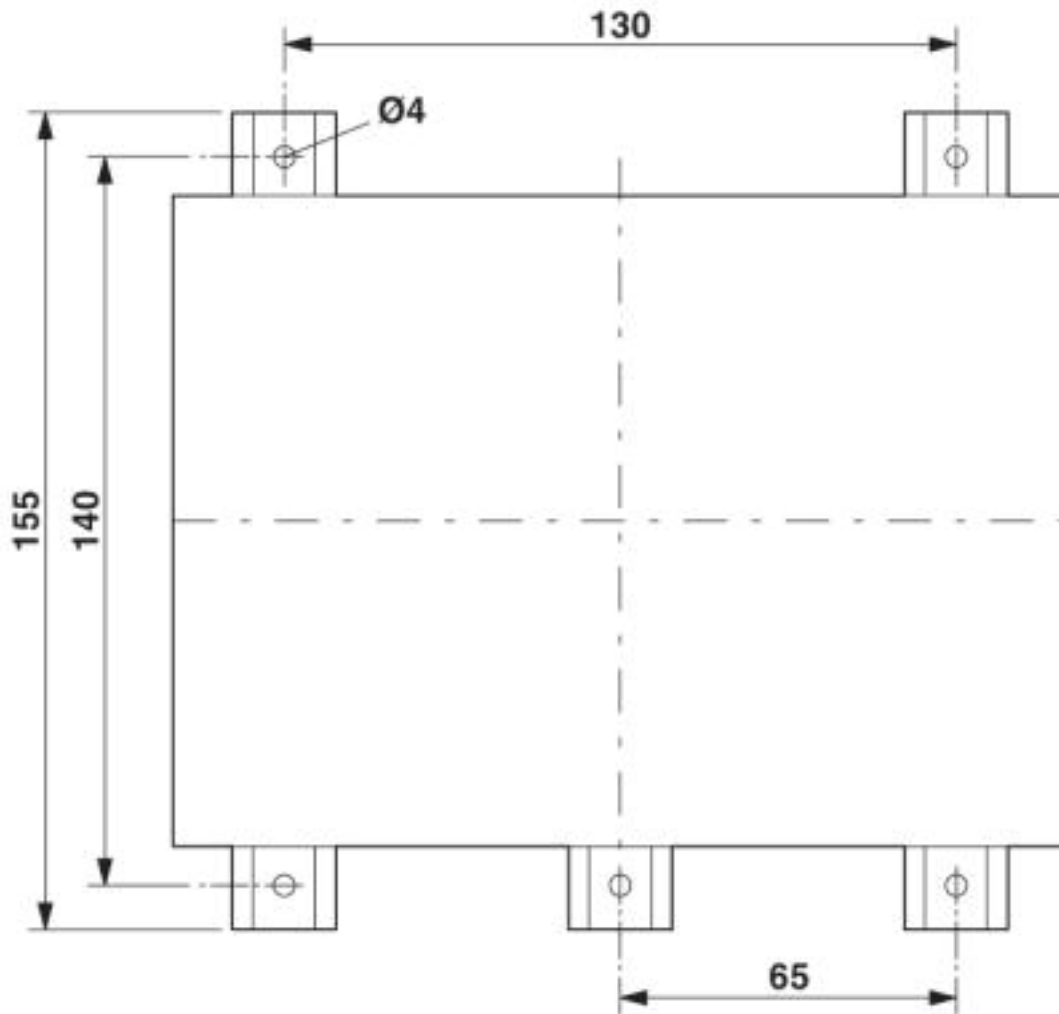
Dimensioned drawing



Dimension A: 155 mm; dimension B: 125 mm; dimension C: 175 mm

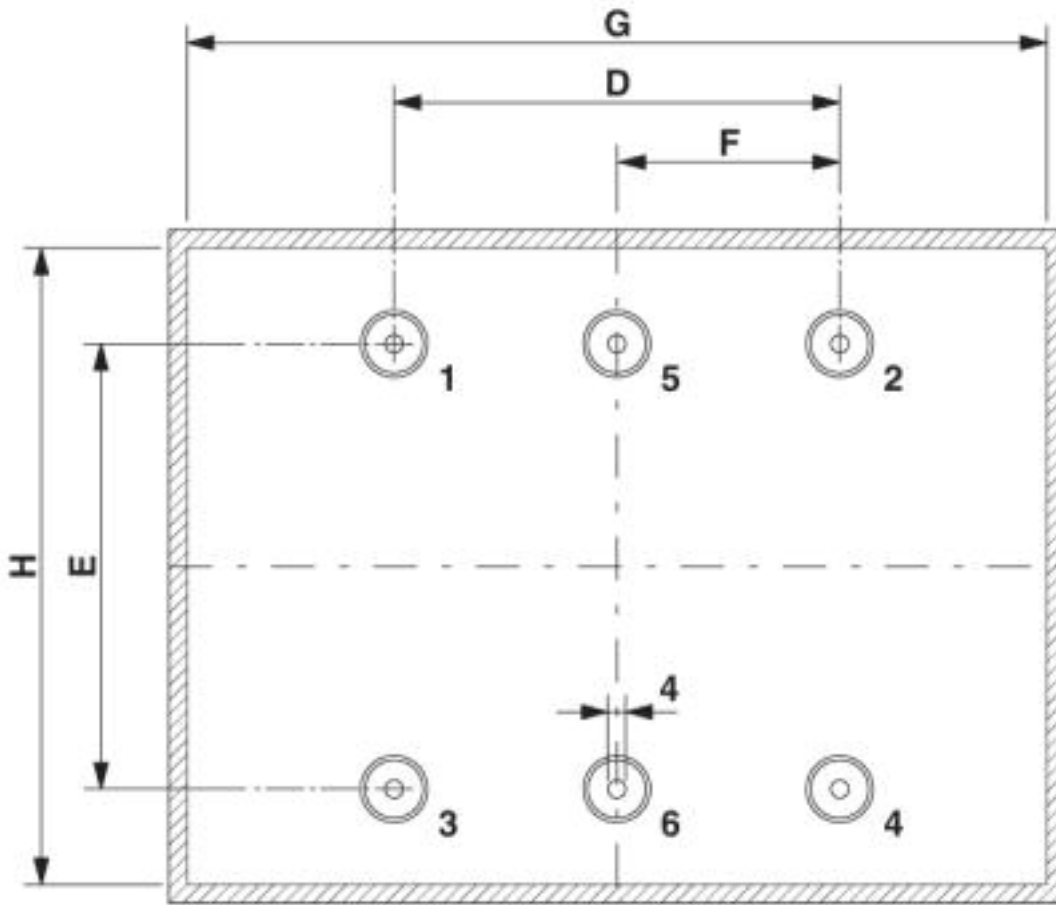
Electronic housing - CM175-LG/H 35/BO/DB/GH BK - 2941507

Dimensioned drawing



Electronic housing - CM175-LG/H 35/BO/DB/GH BK - 2941507

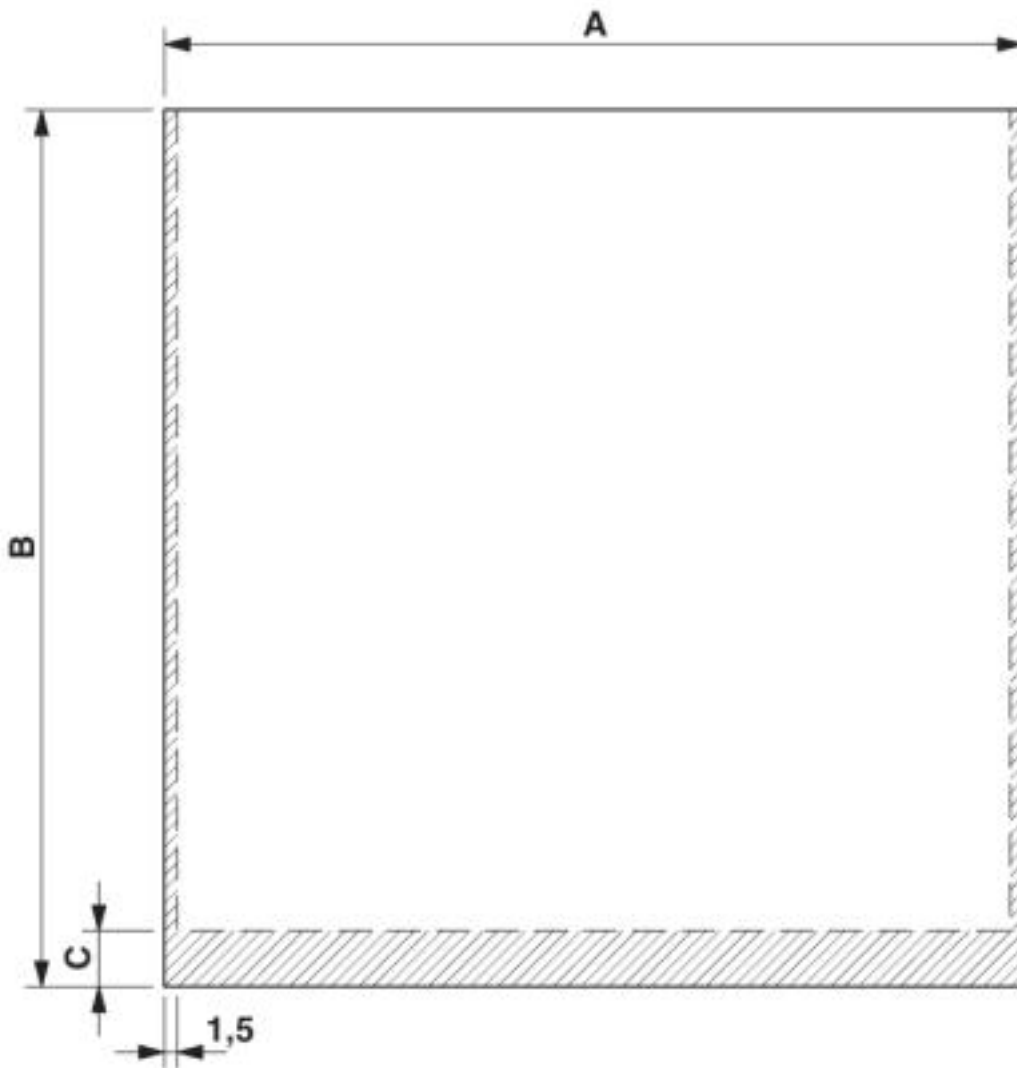
Dimensioned drawing



Dimension D: 100.0 mm; E: 80.0 mm; G: 160.0 mm; H: 112.0 mm
Spacer pins 1 - 4: Height 25 mm; \varnothing 4 mm

Electronic housing - CM175-LG/H 35/BO/DB/GH BK - 2941507

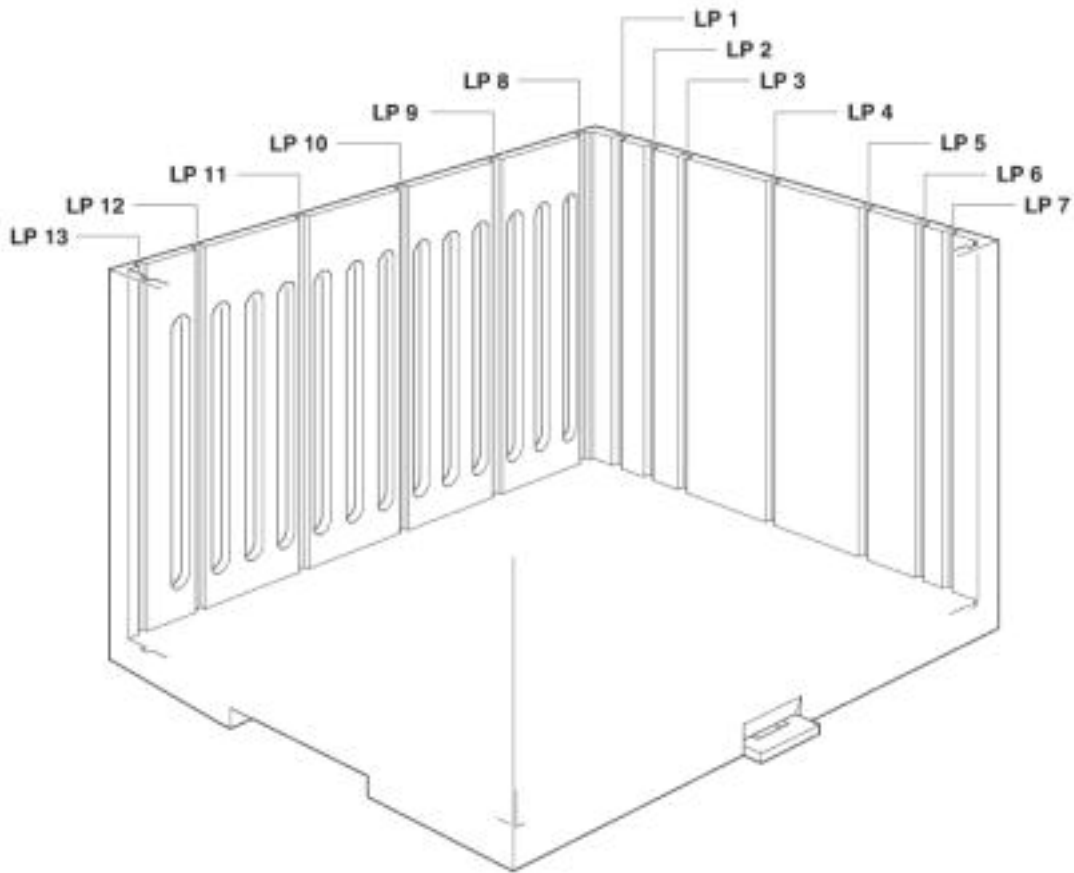
Dimensioned drawing



PCB 1, 7: Dimension A: 165.5 mm; B: 131.5 mm; C: 0 mm
PCB 8, 10, 11, 13: Dimension A: 115.5 mm; B: 139.0 mm; C: 0 mm

Electronic housing - CM175-LG/H 35/BO/DB/GH BK - 2941507

Schematic diagram



© Phoenix Contact 2013 - all rights reserved
<http://www.phoenixcontact.com>