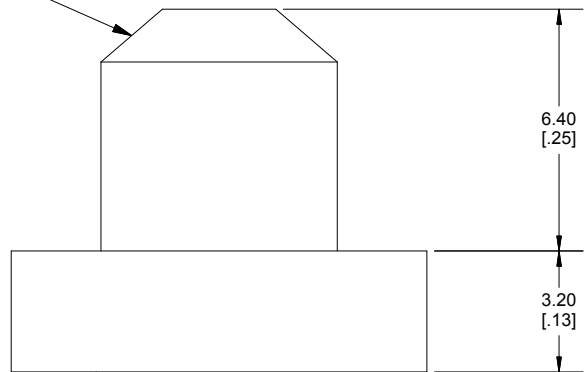


1.63 X 40.7° Chamfer
[.06 X 40.7° Chamfer]



Enclosures can be Factory Modified (Milling, Drilling, Printing etc.)
 Contact Factory mjm@hammondmfg.com for quotes
 Solid models of this enclosure available in STEP or IGES.
 (Part number and text placement/orientation on our products are subject to change,
 we do not recommend using them as a locating reference for modification purposes)

Dimensions:
mm
[inches]



**HAMMOND
MANUFACTURING**®
1592ETRF
www.hammondmfg.com