

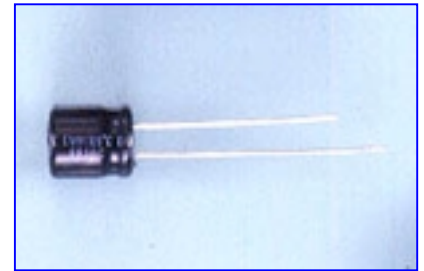
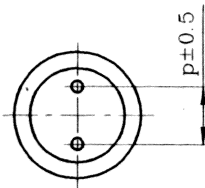
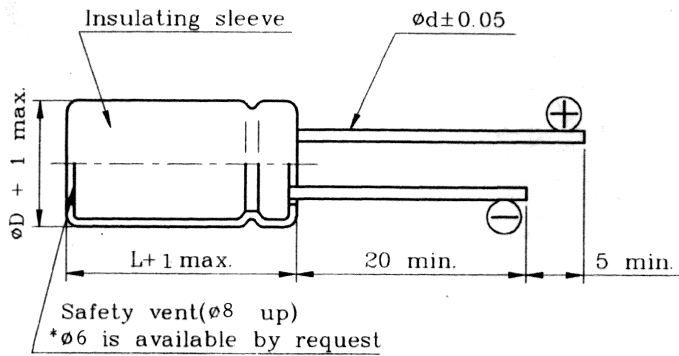
EMR SERIES

- Super miniature size.
- Designed for use in VTRs, car radios, Car stereos. Micro-cassette tape recorders, pocket calculators and watches.

Characteristics

| | | | | | | | | |
|-------------------------------------|---|--------------------|---|------|------|------|------|------|
| Voltage Range | 6.3 ~ 63V | | | | | | | |
| Capacitance Range | 0.47 ~ 220uF | | | | | | | |
| Temperature Range | -40 ~ + 105°C | | | | | | | |
| Capacitance Tolerance | +20% -20% (at 20°C, 120Hz) | | | | | | | |
| Leakage Current | I≤0.01CV or 3uA, whichever is greater (After 2 minutes) | | | | | | | |
| Dissipation Factor | Rated Voltage (V) | 6.3V | 10V | 16V | 25V | 35V | 50V | 63V |
| | Dissipation Factor(tan δ)max | 0.24 | 0.20 | 0.16 | 0.14 | 0.12 | 0.10 | 0.10 |
| (at 20°C, 120Hz) | | | | | | | | |
| Stability at Low Temperature | Impedance ration at 120Hz | | | | | | | |
| | Rated Voltage (V) | 6.3V | 10V | 16V | 25V | 35V | 50V | 63V |
| | Z-25°C/Z 20°C | 4 | 3 | 2 | 2 | 2 | 2 | 2 |
| | Z-40°C/Z 20°C | 8 | 6 | 4 | 4 | 3 | 3 | 3 |
| Load Life | After the rated voltage has been applied for 1000 hours at 105°C | Capacitance change | Within ±20% of initial value | | | | | |
| | | D.F. tanδ | 200% of less of initial specified value | | | | | |
| | | Leakage current | Initial specified value of less | | | | | |
| Shelf Life | After storage for 500 hours at 105°C, with no voltage applied and being stabilized at +20°C, Capacitor shall meet the limit specified in load life. | | | | | | | |

Diagram of dimensions



| | | | | |
|----|------|-----|-----|-----|
| Dφ | 4 | 5 | 6 | 8 |
| F | 1.5 | 2.0 | 2.5 | 3.5 |
| dφ | 0.45 | | | 0.5 |

Maximum Ripple Current mA rms 105°C 120Hz

| uF \ WV | 6.3 | 10 | 16 | 25 | 35 | 50 | 63 |
|---------|-----|-----|-----|-----|----|----|----|
| 0.47 | | | | | | 5 | 6 |
| 1 | | | | | | 10 | 13 |
| 2.2 | | | | | | 19 | 21 |
| 3.3 | | | | | | 24 | 26 |
| 4.7 | | | | | | 29 | 33 |
| 10 | | | 30 | 30 | 33 | 36 | 45 |
| 22 | | | 37 | 45 | 47 | 50 | |
| 33 | | 40 | 42 | 47 | 52 | | |
| 47 | | 47 | 60 | 65 | 70 | | |
| 100 | | 90 | 96 | 150 | | | |
| 220 | | 120 | 150 | | | | |

Case Size of Standard Products DxL(mm)

| UF \ WV | 6.3 | 10 | 16 | 25 | 35 | 50 | 63 |
|---------|--|-----|-----|-----|-----|-----|-----|
| 0.47 | | | | | → | 4x7 | 4x7 |
| 1 | ALL BLANK VOLTAGE ON SLEEVE MARKING IS SAME VOLTAGE "→" POINT TO | | | | → | 4x7 | 4x7 |
| 2.2 | | | | | → | 4x7 | 4x7 |
| 3.3 | | | | | → | 4x7 | 4x7 |
| 4.7 | | | | | → | 4x7 | 4x7 |
| 10 | | → | 4x7 | 4x7 | 4x7 | 5x7 | 6x7 |
| 22 | → | → | 4x7 | 5x7 | 5x7 | 6x7 | |
| 33 | → | 4x7 | 4x7 | 5x7 | 6x7 | | |
| 47 | → | 4x7 | 5x7 | 6x7 | 6x7 | | |
| 100 | → | 5x7 | 6x7 | 8x9 | | | |
| 220 | → | 6x7 | 8x9 | | | | |