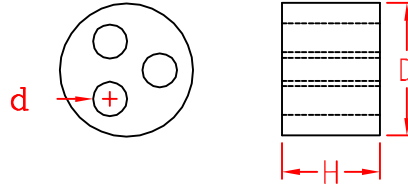


MH-3 TYPE



ITEM NO.	D	d	H
MH9-3A	9±0.5	2.6±0.25	7.3±0.25
MH11-3A	11±0.5	2.6±0.25	8.0±0.25
MH14-3A	14±0.5	2.6±0.25	9.2±0.25
MH14-3B	14±0.5	3.0±0.25	9.2±0.25
MH14-3C	14±0.5	4.2±0.25	9.2±0.25
MH16-3A	16±0.5	5.0±0.25	8.4±0.25
MH18-3A	17.5±0.5	3.0±0.25	9.0±0.25
MH18-3B	17.5±0.5	3.6±0.25	9.0±0.25
MH18-3C	17.5±0.5	4.2±0.25	9.0±0.25
MH18-3D	17.5±0.5	5.0±0.25	9.0±0.25
MH18-3E	17.5±0.5	5.2±0.25	9.0±0.25
MH23-3A	22.8±0.5	3.6±0.25	11.2±0.35
MH23-3B	22.8±0.5	5.2±0.25	11.2±0.35
MH23-3C	22.8±0.5	6.2±0.25	11.2±0.35
MH23-3D	22.8±0.5	8.0±0.25	11.2±0.35
MH30-3A	30.4±1.0	5.2±0.25	14.4±0.35
MH30-3B	30.4±1.0	6.2±0.25	14.4±0.35
MH30-3C	30.4±1.0	8.0±0.25	14.4±0.35
MH30-3D	30.4±1.0	10±0.35	14.4±0.35
MH39-3A	39.0±1.0	8.3±0.25	17.3±0.35
MH39-3B	39.0±1.0	10±0.35	17.3±0.35
MH42-3A	41.8±1.0	8.3±0.25	17.0±0.35
MH42-3B	41.8±1.0	10±0.35	17.0±0.35

		MATERIAL	ITEM NO.
		TPE	MH-3 TYPE
SCALE		FINISH	NAME Multi-Hole Seal (3 HOLES)
△	(. .)	TOLERANCE AS FIGURE	△ 04-20-2012 DATE REVISIONS K001
			R.NO.

