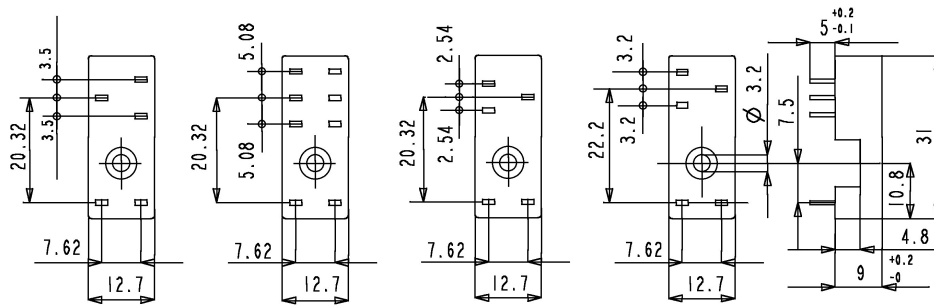
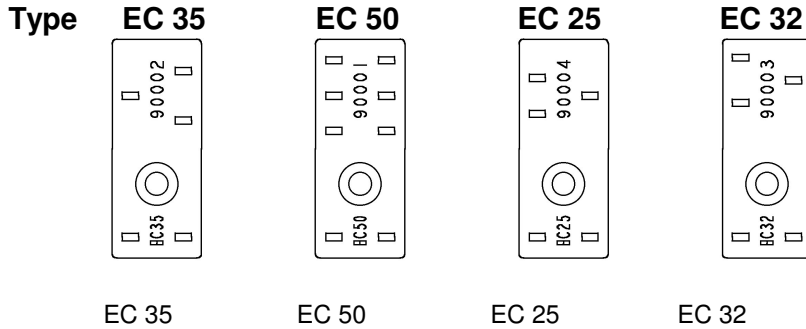


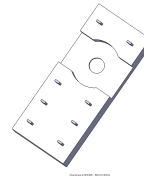
TECHNICAL SPECIFICATION
SOCKETS FOR RELAY

Sheet
1/2
TAB 387

Dimension



For all versions, discharging hole $\varnothing 10$



Technical Data:

1. Materials:

Sockets
Contacts
Contacts surface

PA 6+20% GF flame retarded – V 2
Cu Sn 6
4 / 6 micron tin-plated

2. Electrical Data:

Terminal protection degree
Insulation Voltage

Clearance and creepage distance
Rated voltage
Rated Current

IP 20 B (EN 60529)
5 KV AC between contact coil and contact
4 KV AC between contact
EN 61984
400 V AC
1 Pole = 12 A / 2 Poles = 2x12 A

DATE 20-12-2006	MADE BY M. Girardi	CHECKED BY N. Castellari	APPROVED BY M. Quintino
--------------------	-----------------------	-----------------------------	----------------------------

TECHNICAL DATA
SOCKETS FOR RELAYS

Sheet
2/2
TAB 387

3. Thermal data:

Operating temperatures - 40 + 85°C

4. Approvals:

 Canadian Standard association

 Underwrites Laboratories Inc.

>	12 A 300 V	C22.2 No.14-95
>	12 A 150 V AC	UL-508
	10A 300 V AC	UL-508

Conformity

RoHS compliant (Directive 2002 / 95 EC)

5. Miscellaneous:

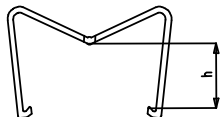
Pieces in each box	100 pcs.
Weight of each socket	EC 50 gr.3.6 / EC 35, 25, 32 gr. 3,2
Hole in the PCB	min. Ø 1.5 mm

6. Accessories:

Clip for relay securing (100 pcs.)
Clip in thermoplastic material - (PA 6 + GF - V2)

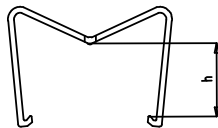
Type

MP 12 - 2



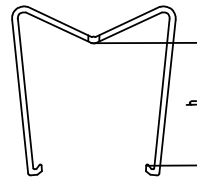
H = Relay Height 12 mm

MP 16 - 2



H = Relay Height 15 - 16,5 mm

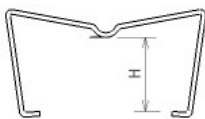
MP 25 - 2



H = Relay Height 25 - 25,5 mm

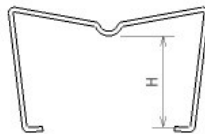
Clip for relay securing (100 pcs.)
Steel clip - (X Cr Ni Steel)

MH 12-2



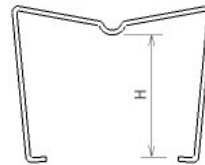
H = Relay Height 20,4 mm

MH 16 - 2



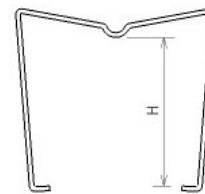
H = Relay Height 15 - 16,5 m

MH 20 - 2



H = Relay Height 20,4 mm

MH 25 - 2



H = Relay Height 25 - 25,5 mm

DATE 20-12-2006	MADE BY M. Girardi	CHECKED BY N. Castellari	APPROVED BY M. Quintino
--------------------	-----------------------	-----------------------------	----------------------------