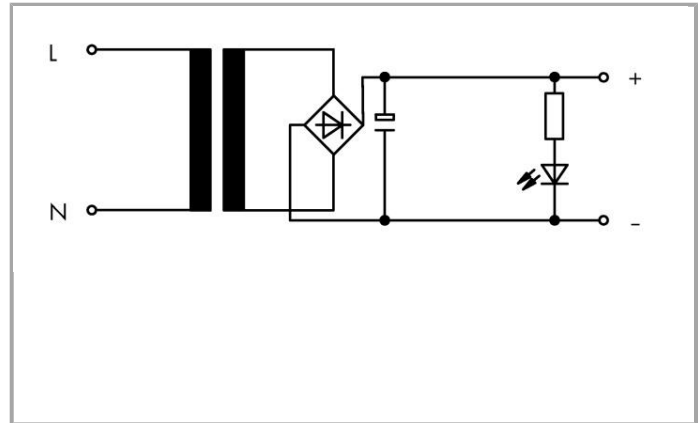
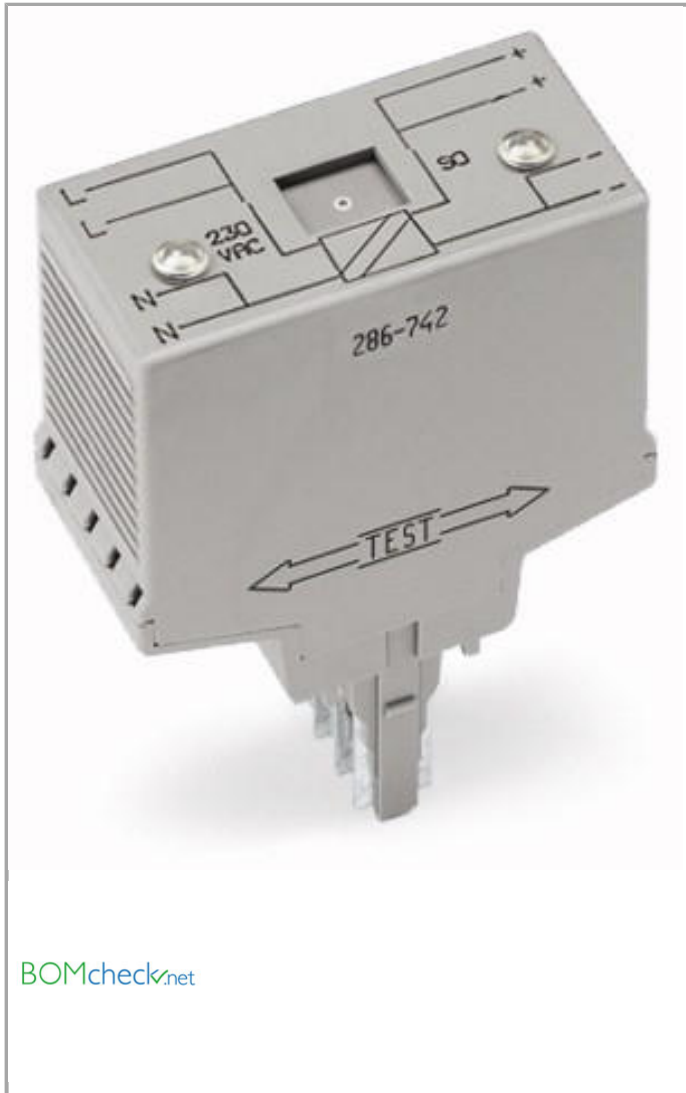


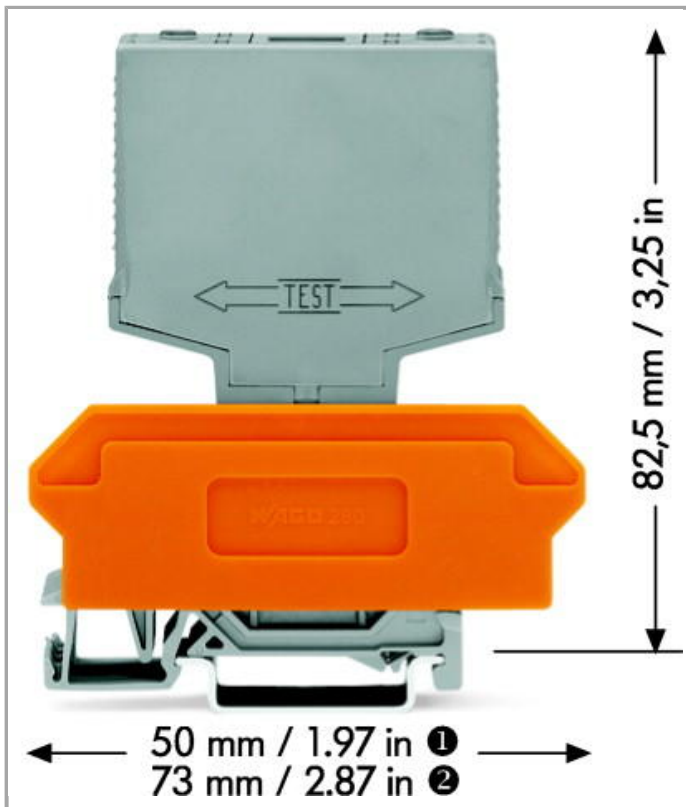
Data sheet | Item number: 286-742

S0 interface power supply; Input voltage: 230 VAC; S0 interface

www.wago.com/286-742



BOMcheck.net



Item description

This compact module supplies power to passive S0 current meter interfaces.

Data

Electrical data

Nominal operating voltage	230 VAC
Nominal mains frequency range	50 Hz
Max. Output voltage (DC)	27 V
Max. output current	27 mA

Safety and protection:

Dielectric strength input/output (AC, 1 min)	2.5 kV _{rms}
--	-----------------------

Geometrical Data

Width	25 mm / 0.984 inch
Height from upper-edge of DIN-35 rail	82.5 mm / 3.248 inch
Depth	73 mm / 2.874 inch

Mechanical data

Type of mounting	Pluggable module for carrier terminal blocks
Housing design	Pluggable module for terminal blocks

Material Data

Color	gray
Fire load	0.559 MJ
Weight	57 g

Environmental Requirements

Surrounding air (operating) temperature	0 ... 70 °C
Surrounding air (storage) temperature	-40 ... 80 °C

Standards and specifications

Standards/specifications	EN 60664-1; EN 60742
--------------------------	----------------------

Commercial data

Country of origin	DE
GTIN	4017332564403
Customs Tariff No.	85365005000
Product Group	6 (Interface Electronics)

Compatible products

Marking accessories



Item no.: 209-701
WSB marking card; as card; not stretchable; plain; snap-on type

www.wago.com/209-701



Item no.: 209-701/000-002
WSB marking card; as card; not stretchable; plain; snap-on type

www.wago.com/209-701/000-002



Item no.: 209-701/000-005
WSB marking card; as card; not stretchable; plain; snap-on type

www.wago.com/209-701/000-005



Item no.: 209-701/000-006
WSB marking card; as card; not stretchable; plain; snap-on type

www.wago.com/209-701/000-006



Item no.: 209-701/000-007
WSB marking card; as card; not stretchable; plain; snap-on type

www.wago.com/209-701/000-007



Item no.: 209-701/000-012
WSB marking card; as card; not stretchable; plain; snap-on type

www.wago.com/209-701/000-012



Item no.: 209-701/000-017
WSB marking card; as card; not stretchable; plain; snap-on type

www.wago.com/209-701/000-017



Item no.: 209-701/000-023
WSB marking card; as card; not stretchable; plain; snap-on type

www.wago.com/209-701/000-023



Item no.: 209-701/000-024
WSB marking card; as card; not stretchable; plain; snap-on type

www.wago.com/209-701/000-024

Downloads

Documentation

Bid Text

286-742	Jan 15, 2016	DOC 24.1 kB	Download
Interface-Bausteine mit Sonderfunktionen			

Additional Information

Disposal; Electrical and electronic equipment, Packaging	Oct 15, 2018	265.8 kB	Download
--	--------------	----------	----------

smartDATA

CAD data

3D Download 286-742	URL	Download
---------------------	-----	----------

Subject to changes.

WAGO Kontakttechnik GmbH & Co. KG
Hansastr. 27
32423 Minden
Phone: +49571 887-0 | Fax: +49571 887-169
Email: info.de@wago.com | Web: www.wago.com

Do you have any questions about our products?
We are always happy to take your call at +49 (571) 887-44222.