

Pulse generator ZTG
Serie 17,5mm
universal



APPLICATION

Time control

DESCRIPTION

The ZTG Pulse generator offers an independent regulation of the pulse and pause times, which are each adjusted with two independent potentiometers and DIP switches which are located on the front panel of the unit. The timer can operate on either 230V AC using terminals A1 and A2 or 24V UC using terminals A3 and A2. The green LED indicates the connection of the power supply.

FUNCTION

Beginning with pulse

The timing begins with the connection of the power supply to the terminals A1 and A2 or A3 and A2. The timing begins with a pulse. This is indicated by the yellow LED. Upon completion of the selected delay time on the potentiometer t_i , the output contact switches into its rest position. After completion of the selected timing cycle on potentiometer t_p , the output relay again switches into its working position. This sequence will repeat itself as long as the power supply is connected. Should the power supply be interrupted during the reset time, then the relay returns to its original state. This also applies if the power is disconnected during the timing period.

Beginning with pause

The timing begins with connection of the power supply to the terminals A1 and A2 or A3 and A2. The timing begins with a pause. Upon completion of the selected delay time on the potentiometer t_p , the output contact switches to its working position. This is indicated by the yellow LED. After completion of the selected timing cycle on potentiometer t_i , the output contact switches into its rest position. This sequence will repeat itself as long as the power supply is connected. Should the power supply be interrupted during the duration reset time, then the relay returns to its original state. This also applies if the power is disconnected during the timing period.

PART NUMBER

011172 ZTG1 24V/230V 1 changeover
011173 ZTG2 24V/230V 2 changeover

OPTIONS

Other timing ranges and voltages available upon request.

TIMING RANGES

4 timing ranges, adjustable by DIP switch

Pulse		Pause	
0,15	- 3 s	0,15	- 3 s
1,5	- 30 s	1,5	- 30 s
15	- 300 s	15	- 300 s
3,0	- 60 m	3,0	- 60 m

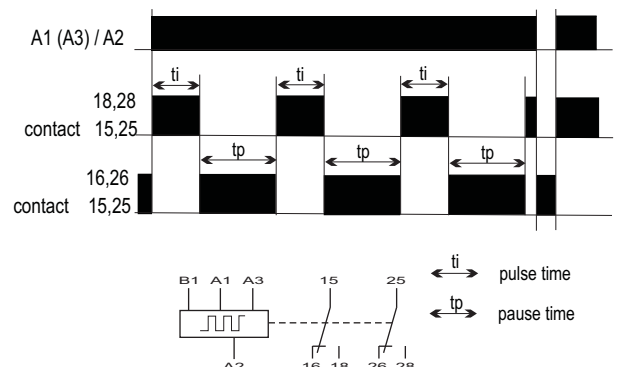
APPROVALS



MOUNTING

Snap-on mounting using a standard DIN rail EN 50022. The unit is designed to allow side-by-side mounting, with an ambient temperature of < 60°C.

FUNCTION DIAGRAM



Pulse generator ZTG
Serie 17,5mm
universal

TECHNICAL DATA

Supply

Supply voltage :	A1/A2:230V AC +/-15% A3/A2:24V AC/DC -/+15%
Frequency range :	0/50 ... 60Hz
Power consumption :	1VA at 24V AC 6VA at 230V
Operating mode :	continuous
Supply voltage influence :	< 0,01 over voltage range
Temperature influence :	< 0,01 %/°C
Recovery time :	> 100 ms
Time range pulse/pause :	0,15s - 1h separated in 4 ranges
Repetitive accuracy :	0,2 %

Operation indicators

Supply voltage :	LED, green
Relay in working position :	LED, yellow

Contact

Number of changeovers :	ZTG1 1 ; ZTG2 - 2
Contact material :	AgSnO ₂
Max. switching voltage:	400V AC
Max. switching current:	8A
Max. switching power (AC) :	2000VA
Max. starting current :	30A
Drop-off time of switching element :	approx. 20ms
Max. switching frequency :	15Hz
Mechanical contact life :	30 x 10 ⁶

B1 - Input

Voltage :	20V 250 AC/DC
Connected :	Beginning with pause
Not connected :	Beginning with pulse

General data

Ambient temperature :	- 25 ... + 60°C
Climate resistance :	VDE 0435T.2021
Mounting position :	any
Vibration resistance :	VDE 0435T.2021
Test voltage :	4 kV
Isolation group :	VDE 0110 group C 250
Protection against accidental contact :	VDE 0106T.100 / VBG4
Mounting :	symmetrical rail DIN EN 50022
Dimensions l x w x h :	90mm x 17,5mm x 69,5mm
Weight :	ZTG1 96g ZTG2 104g

CONNECTION DIAGRAM

