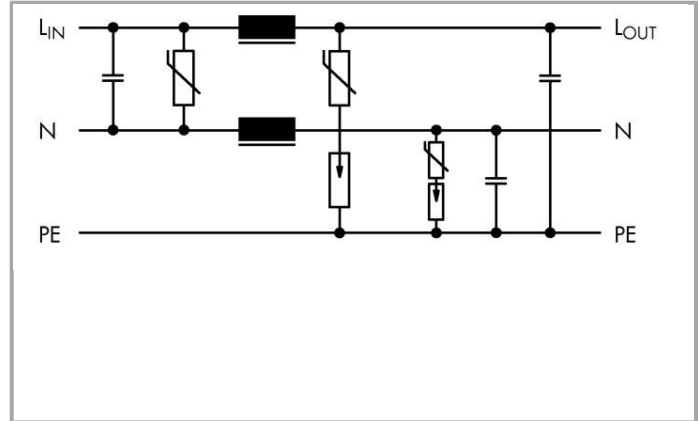
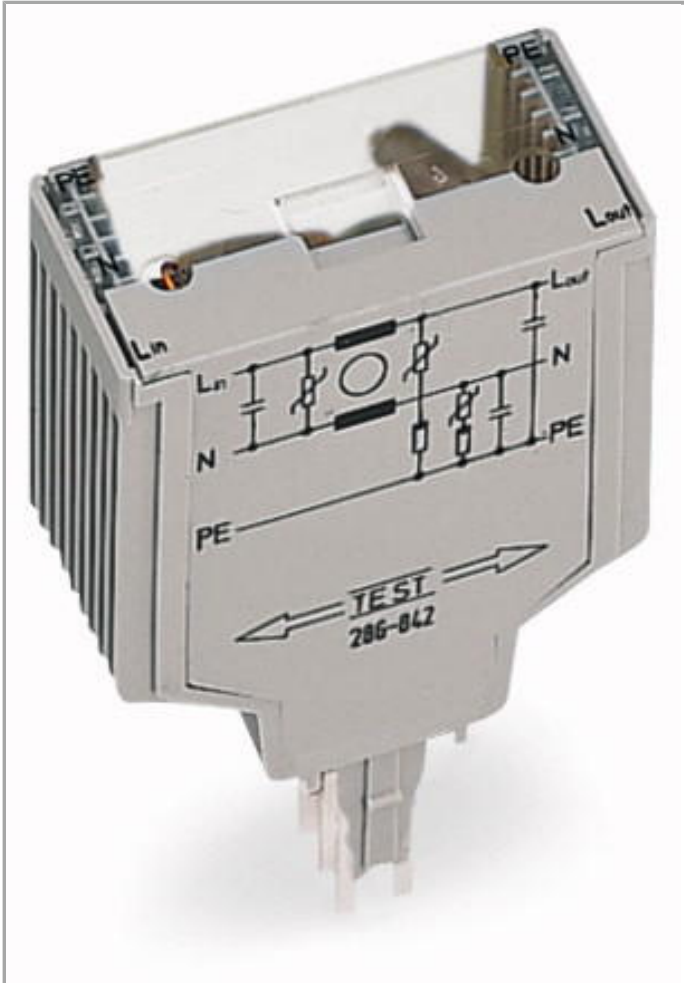


Data sheet | Item number: 286-841

Surge suppression module for signal technology; Nominal voltage: 220 VDC;
for 2 signal paths with common surge arrester; pluggable on rail-mount
terminal block, 25 mm wide



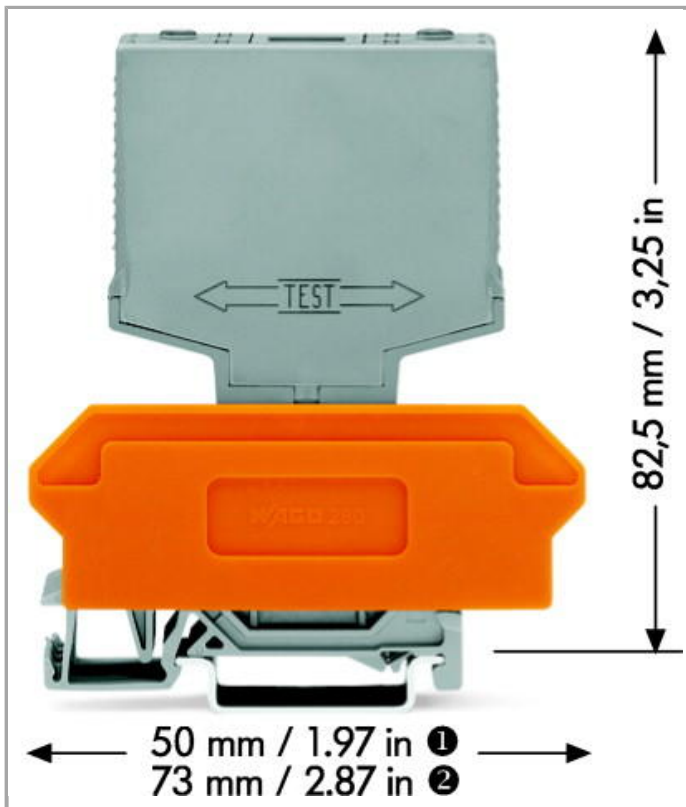
www.wago.com/286-841



RoHS Compliant

[BOMcheck.net](https://www.bomcheck.net)

Color: ■



Item description

Short description:

Two- and three-stage pluggable surge suppression modules (286 Series) for data, measurement, control, or power circuits are also available.

Features:

- Protect your system against overvoltage
- Slim, space-saving design
- Control operational costs by preventing expensive, unplanned downtime
- High operational reliability and system uptime

Note:

For isolation measurement, the ground contact at the transient suppression module must be disconnected.

Data

Electrical data

Nominal operating voltage	220 VDC
Operating voltage	≤ 320 VDC
Nominal current	6 A
Rated continuous current	6 A
Nominal discharge current line/line	600 A



Nominal discharge current line/PG	600 A
Max. surge current line/line	1.5
Max. surge current line/PG	1.5
Voltage protection level line/line	≤ 650 V
Voltage protection level line/PG	≤ 900 V
Response time line/line	≤ 25 ns
Response time line/PG	≤ 1 ms

Safety and protection:

Rated voltage	250 V
Rated impulse voltage	4 kV
Pollution degree	3

Geometrical Data

Width	25 mm / 0.984 inch
Height from upper-edge of DIN-35 rail	82.5 mm / 3.25 inch
Depth	52 mm / 1.654 inch

Mechanical data

Type of mounting	Pluggable module for carrier terminal blocks
Housing design	Pluggable module for terminal blocks

Material Data

Color	gray
Fire load	4.241 MJ
Weight	43.2 g

Environmental Requirements

Surrounding air (operating) temperature	-25 ... 85 °C
---	---------------

Commercial data

Country of origin	DE
GTIN	4045454353292
Customs Tariff No.	85366990990
Product Group	6 (Interface Electronics)

Compatible products

Marking accessories



Item no.: 209-700/209-124
 WSB marking card; as card; MARKED; F11, ..., F20 (10x); not stretchable; Vertical marking; snap-on type www.wago.com/209-700/209-124



Item no.: 209-700/209-125
 WSB marking card; as card; MARKED; F21, ..., F30 (10x); not stretchable; Vertical marking; snap-on type www.wago.com/209-700/209-125



Item no.: 209-700/209-126
 WSB marking card; as card; MARKED; F31, ..., F40 (10x); not stretchable; Vertical marking; snap-on type www.wago.com/209-700/209-126



Item no.: 209-700/209-127
 WSB marking card; as card; MARKED; not stretchable; Vertical marking; snap-on type www.wago.com/209-700/209-127



Item no.: 209-701
 WSB marking card; as card; not stretchable; plain; snap-on type www.wago.com/209-701



Item no.: 209-701/000-002
 WSB marking card; as card; not stretchable; plain; snap-on type www.wago.com/209-701/000-002



Item no.: 209-701/000-005
 WSB marking card; as card; not stretchable; plain; snap-on type www.wago.com/209-701/000-005



Item no.: 209-701/000-006
 WSB marking card; as card; not stretchable; plain; snap-on type www.wago.com/209-701/000-006



Item no.: 209-701/000-007
 WSB marking card; as card; not stretchable; plain; snap-on type www.wago.com/209-701/000-007



Item no.: 209-701/000-012
 WSB marking card; as card; not stretchable; plain; snap-on type www.wago.com/209-701/000-012



Item no.: 209-701/000-017
 WSB marking card; as card; not stretchable; plain; snap-on type www.wago.com/209-701/000-017



Item no.: 209-701/000-023
 WSB marking card; as card; not stretchable; plain; snap-on type www.wago.com/209-701/000-023







Item no.: 209-701/000-024
 WSB marking card; as card; not stretchable; plain; snap-on type www.wago.com/209-701/000-024






Item no.: 209-702
 WSB marking card; as card; MARKED; 1 ... 10 (10x); not stretchable; Vertical marking; snap-on type www.wago.com/209-702



Item no.: 209-703
 WSB marking card; as card; MARKED; 11 ... 20 (10x); not stretchable; Vertical marking; snap-on type www.wago.com/209-703

	Item no.: 209-704 WSB marking card; as card; MARKED; 21 ... 30 (10x); not stretchable; Vertical marking; snap-on type	www.wago.com/209-704
	Item no.: 209-705 WSB marking card; as card; MARKED; 31 ... 40 (10x); not stretchable; Vertical marking; snap-on type	www.wago.com/209-705
	Item no.: 209-706 WSB marking card; as card; MARKED; 41 ... 50 (10x); not stretchable; Vertical marking; snap-on type	www.wago.com/209-706
	Item no.: 209-707 WSB marking card; as card; MARKED; 51 ... 100 (2x); not stretchable; Vertical marking; snap-on type	www.wago.com/209-707

General accessories

	Item no.: 280-629 Terminal block for pluggable modules; 20-pole; with 4-conductor terminal blocks; with orange separator; for DIN-rail 35 x 15 and 35 x 7.5; 2.5 mm ²	www.wago.com/280-629
	Item no.: 280-639 Terminal block for pluggable modules; 10-pole; with 2-conductor terminal blocks; with orange separator; for DIN-rail 35 x 15 and 35 x 7.5; 2.5 mm ²	www.wago.com/280-639
	Item no.: 280-765 Terminal block for pluggable modules; 20-pole; with 4-conductor terminal blocks; with marker carrier; with orange separator; for DIN-rail 35 x 15 and 35 x 7.5; 2.5 mm ²	www.wago.com/280-765

Downloads

Documentation

Additional Information

Disposal; Electrical and electronic equipment, Packaging	Oct 15, 2018	265.8 kB	Download
--	--------------	----------	----------

smartDATA

CAD data

3D Download 286-841	URL	Download
---------------------	-----	----------

Subject to changes.