

26PC -- 6D

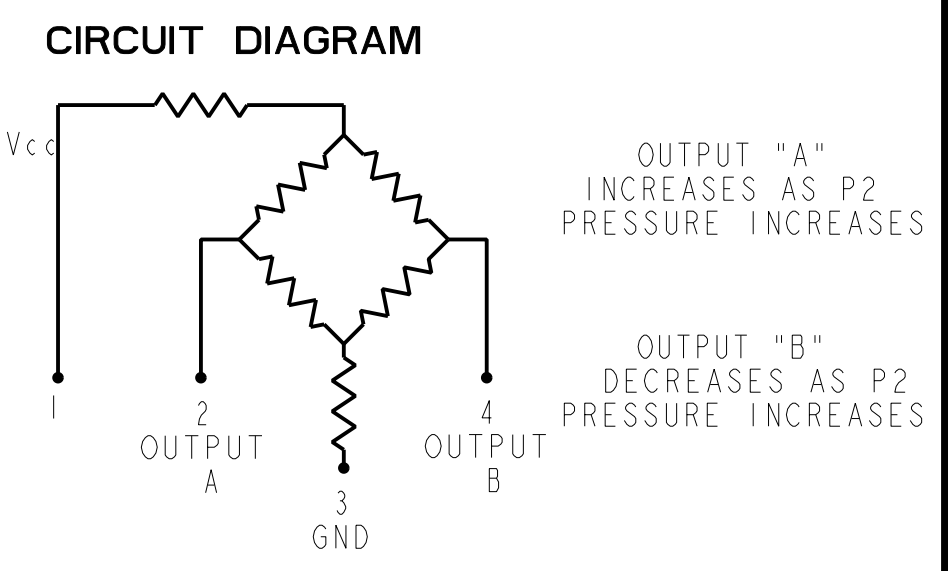
CATALOG LISTING	LASER BRAND / 8
26PCAF6D	6AF6D
26PCDF6D	6DF6D
26PCFF6D	6FF6D
26PCCFJ6D	6CF6D
26PCBFA6D	6BF6D
26PCCFA6D	6CF6D
26PCFNH6D	6FN6D
26PCFFT6D	6FF6D
26PCGFA6D	6GF6D
26PCGNH6D	6GN6D
26PCBVA6D	6BV6D
26PCCVA6D	6CV6D

- STYLE
- (D) DIFFERENTIAL TERMINATION
- (6) 1 X 4 (.60 IN.) PORT
- (A) STRAIGHT
- (H) 5mm THREAD
- (J) SMALL NEEDLE
- (T) LONG BARBED
- SEAL
- (F) FLUOROSILICONE
- (N) NEOPRENE (70 DURO)
- (V) VITON
- PRESSURE
- (A) 1 PSI
- (B) 5 PSI
- (C) 15 PSI
- (D) 30 PSI
- (E) 100 PSI
- (G) 250 PSI

METRIC	INCHES
0.41	.016
0.51	.020
1.02	.040
1.3	.05
1.8	.07
1.93	.076
1.98	.078
2.0	.08
2.3	.09
2.5	.10
3.18	.125
4.06	.160
4.70	.185
5.1	.20
6.4	.25
7.9	.31
9.1	.36
11.2	.44
11.7	.46
12.7	.50
15.3	.60
16.5	.64
17.3	.68
19.1	.75
21.8	.86
22.1	.87
34.3	1.35
35.6	1.40
35.8	1.41
40.6	1.60

PRESSURE RANGE (PSI)	0 - 1		0 - 5		0 - 15		0 - 30		0 - 100		0-250		UNITS								
	MIN	NOM	MAX	MIN	NOM	MAX	MIN	NOM	MAX	MIN	NOM	MAX									
SPAN (P2>P1) / 1	14.7	16.7	18.7	47	50	53	97	100	103	95	100	103	95	100	105	143	150	157	mV		
NULL OFFSET	-1.5	0	+1.5	-1.5	0	+1.5	-1.5	0	+1.5	-1.5	0	+1.5	-2.0	0	+2.0	-2.0	0	+2.0	mV		
LINEARITY (BFSL, P2>P1)	TYP		MAX	TYP		MAX	TYP		MAX	TYP		MAX	TYP		MAX	TYP		MAX	UNITS		
NULL SHIFT (0 TO 25 °C, 25 TO 50 °C) / 2	±0.5		±1.0	±0.5		±1.0	±0.5		±1.0	±0.75		±1.5	±0.5		±1.0	±2.0		±1.0	±2.0	mV	
SPAN SHIFT (0 TO 25 °C, 25 TO 50 °C) P2>P1 / 2	±1.0		±2.0	±1.0		±1.5	±0.75		±1.5	±0.75		±1.5	±0.5		±1.5	±0.5		±1.5	±0.5	±1.5	%SPAN
REPEATABILITY AND HYSTERESIS	±0.5		±2.0	±0.2			±0.2			±0.2			±0.2			±0.20				±0.20	%SPAN
OVERPRESSURE (P2>P1; P1>P2)			20			20			45			60			200			500			PSI
ALL PRESSURE RANGES	MIN	NOM	MAX	UNITS																	
EXCITATION VOLTAGE				10	16	VDC															
INPUT RESISTANCE				5.5K	7.5K	1.5K	OHMS														
OUTPUT RESISTANCE				1.5K	2.5K	3.0K	OHMS														
RESPONSE TIME				1.0			ms														
TEMPERATURE RANGES																					
STORAGE	-55 °C TO +100 °C (-67°F TO +212°F)																				
OPERATE	-40 °C TO +85 °C (-40°F TO +185°F)																				
COMPENSATED	0 TO +50 °C (+32 °F TO +122 °F)																				

- NOTES
- SPAN IS THE ALGEBRAIC DIFFERENCE BETWEEN OUTPUT AT MAXIMUM RATED OPERATING PRESSURE AND OUTPUT AT 0 PSI
 - TEMPERATURE ERROR IS CALCULATED WITH RESPECT TO 25 °C
 - INPUT MEDIA LIMITED ONLY TO THOSE MATERIALS THAT WILL NOT ATTACK SILICON, THE HOUSING MATERIAL OR SEAL MATERIAL
 - TERMINALS ARE PLATED FOR SOLDERING (LIMIT SOLDERING TO 315 °C FOR 10 SECONDS MAXIMUM)
 - PIN 1 IS IDENTIFIED BY NOTCH IN LEAD
 - SENSOR IS OPERATIONAL OVER VACUUM PRESSURE RANGE
 - RATIOMETRIC TO SUPPLY VOLTAGE
 - CATALOG LISTING AND DATE CODE HERE. ALTERNATE FORMAT OF CATALOG LISTING BRAND IS THE ENTIRE CATALOG LISTING



THIS DRAWING COVERS A PROPRIETARY ITEM AND IS THE PROPERTY OF MICRO SWITCH, A DIVISION OF HONEYWELL. THIS DRAWING IS NOT TO BE COPIED OR USED WITHOUT THE APPROVAL OF MICRO SWITCH.

FED. MFG. CODE 91929

MICRO SWITCH
a Honeywell Division

BRIDGE PRESSURE SENSOR

26PC SERIES CHART 4

SCALE: 3 : 1
DO NOT SCALE PRINT
UNLESS OTHERWISE SPECIFIED TOLERANCES ARE:
ONE PLACE (.0) +.030
TWO PLACE (.00) +.015
THREE PLACE (.000) +.005
ANGLES °
WEIGHT 2.0Z